

April 21, 2021

Mr. Barry Lorion
District Highway Director
MassDOT District 3
499 Plantation Parkway
Worcester, MA 01605

Attn.: Lori Shattuck

Reference: Town of Holliston – Heavy Commercial Vehicle Exclusion

Dear Mr. Lorion:

The Town of Holliston held a public meeting on August 25, 2020 to discuss residents' public health and public safety concerns due to heavy through truck traffic on Local Streets and Collectors, primarily in the vicinity of the Lowland Industrial Park. In addition, the Town has previously met with MassDOT representatives to discuss heavy truck traffic on South Street due to its proximity to the Hopping Brook Industrial Park, which is projected to worsen with future development in the industrial park. To address these community concerns, the Town is requesting a Heavy Commercial Vehicle Exclusion (HCVE) along the following seven (7) roadways:

- South Street from the Medway Town Line to Washington Street (Route 16), including Clark Street from the Town Line to Milford Street (Route 109) in the Town of Medway
- Railroad Street/Woodland Street from Central Street to Washington Street (Route 16)
- Bullard Street from Central Street to Fiske Street
- Fiske Street from Central Street to Bullard Street
- Lowland Street from Fiske Street to Woodland Street
- High Street from Washington Street (Route 16) to Concord Street (Route 126)
- Locust Street from Washington Street (Route 16) to High Street

The location of the proposed HCVE along South Street and Clark Street and its alternate route are depicted in Figure 1. As the proposed HCVEs along Railroad Street, Woodland Street, Bullard Street, Fiske Street, and Lowland Street are contiguous and share alternate routes, the proposed HCVEs and alternate for these roadways are depicted collectively in Figure 2. Similarly, the proposed HCVEs along High Street and Locust Street are shown collectively in Figure 3.

In accordance with Section 10A-9 of the Massachusetts Amendments to the MUTCD, the Town and its consultant, McMahon Associates, have collected and compiled the following data for each subject roadway:

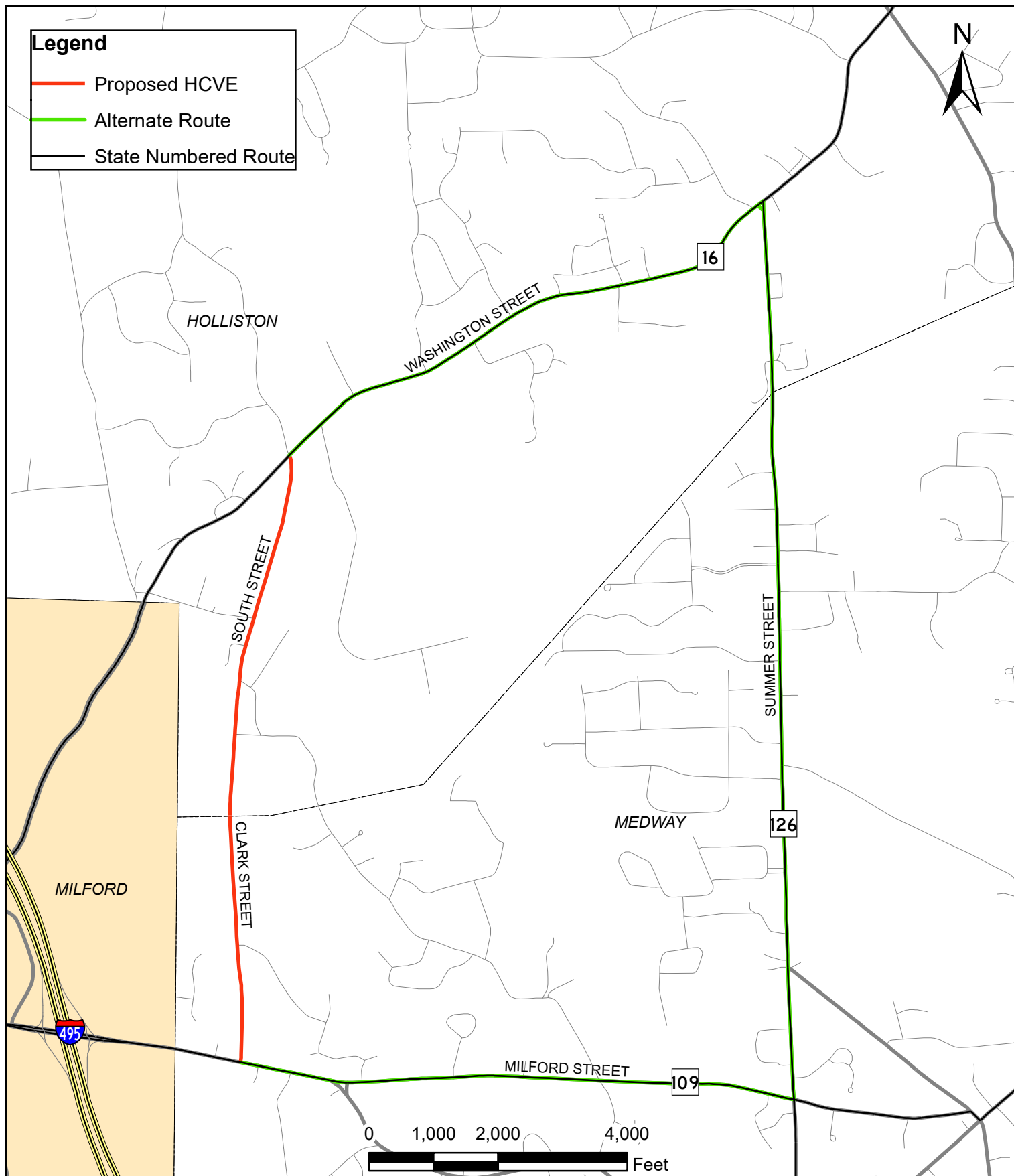


Figure 1
 Proposed Heavy Commercial Vehicle Exclusion
 South Street/Clark Street
 Town of Holliston, MA

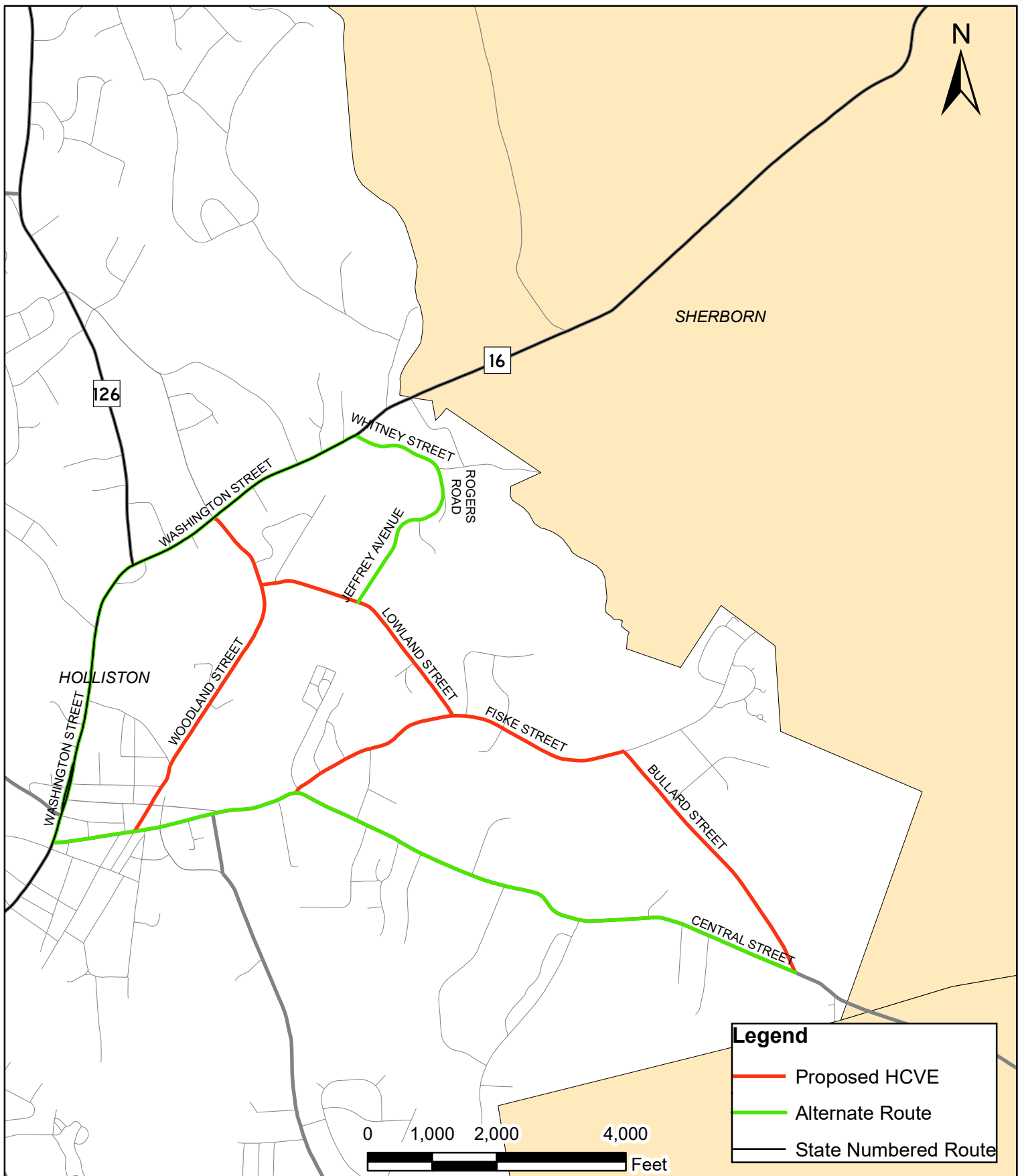


Figure 2
 Proposed Heavy Commercial Vehicle Exclusion
 Railroad Street, Woodland Street, Lowland Street,
 Fiske Street, Bullard Street
 Town of Holliston, MA

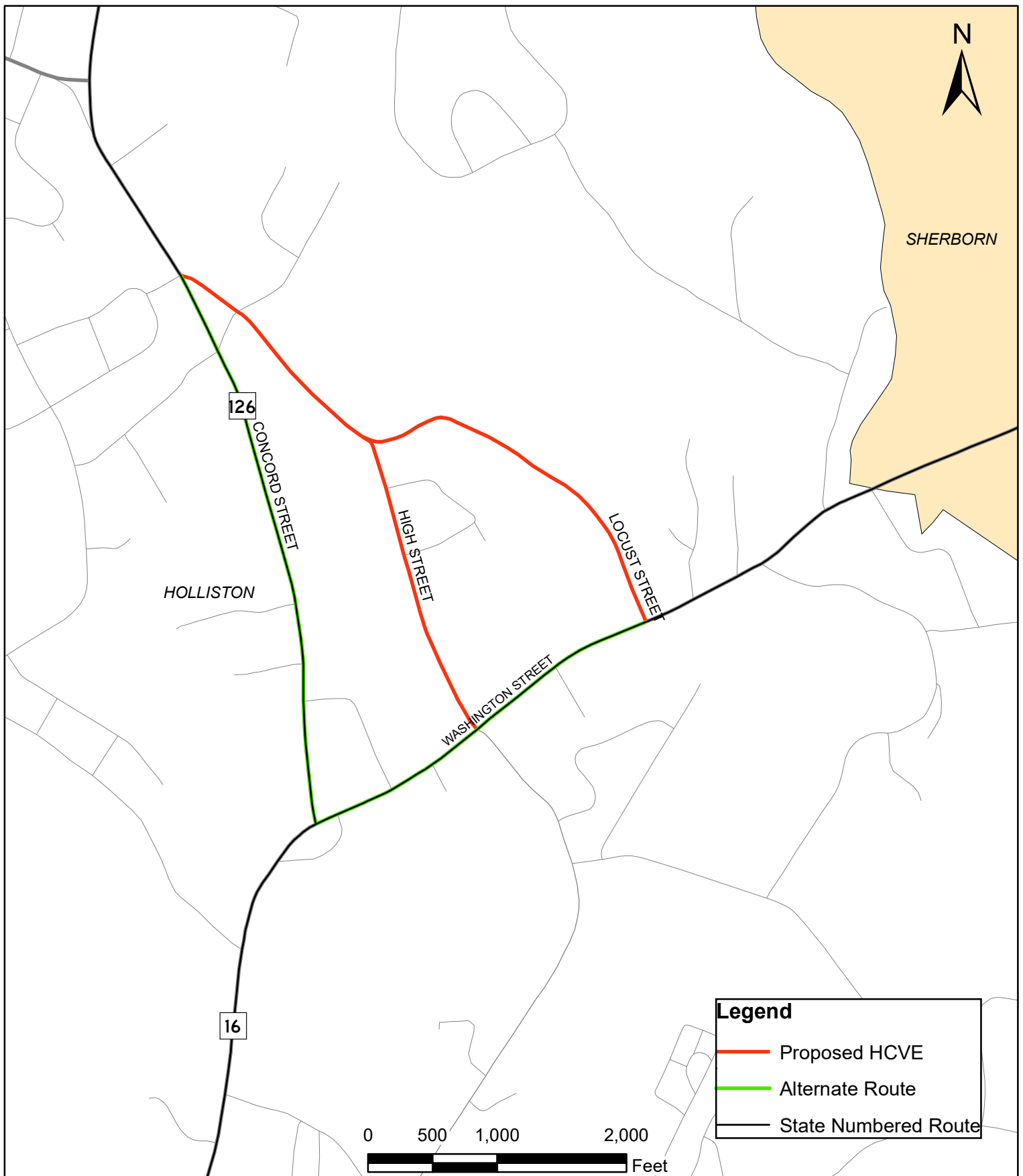


Figure 3
Proposed Heavy Commercial Vehicle Exclusion
High Street, Locust Street
Town of Holliston, MA

- Roadway and Lane Widths
- Traffic Volumes and Classification
- Pavement condition
- Traffic Control
- Land Use and Zoning

24-hour traffic counts were collected on each roadway on Thursday, February 25, 2021. Table 1 below summarizes the 24-hour unadjusted daily traffic volume and percentage of truck traffic on each roadway. As shown in Table 1, each roadway was observed to carry more than 5 percent truck traffic over the 24-hour period. Additionally, truck volumes may be underrepresented as several seasonal businesses in the Lowland Industrial Park were not yet in operation during data collection.

Table 1: Traffic Volume Summary

	Daily Two-Way Traffic Volume (Unadjusted)¹	% Heavy Vehicles²
South Street	2,310	14.0%
Woodland Street	4,461	5.8%
Bullard Street	965	12.7%
Fiske Street	1,752	10.4%
Lowland Street	1,977	11.7%
High Street	2,369	7.2%
Locust Street	747	6.8%

¹Unadjusted 24-hour traffic volume collected Thursday, February 25, 2021 by Transportation Data Corp.

²Commercial vehicles with 2½ tons or greater carrying capacity (2-axle, 6-tire or larger)

The following sections describe the characteristics of each roadway in greater detail.

South Street

South Street extends approximately 1.1 miles, from Washington Street (Route 16) to the north to the Medway Town Line to the south. In Medway, the roadway continues south as Clark Street for 0.7 miles to Milford Street (Route 109). South Street is classified as a Local Street and is under the jurisdiction of the Town of Holliston, while Clark Street is a Local Street under the jurisdiction of the Town of Medway. Land use along the roadway is primarily single-family residential. Kampersal Field, a baseball and softball facility, is located at the southeast corner of South Street and Kampersal Road. The intersection of South Street with Fisher Street, located approximately 0.8 miles south of Washington Street, is all-way STOP controlled. The Upper Charles Rail Trail crosses South Street approximately 75 feet north of the Fisher Street intersection; Rectangular Rapid Flashing Beacons (RRFBs) are provided at the crossing.

South Street is 22 feet wide with one 11-foot-wide travel lane and no shoulder in each direction along most of its length, widening to 26 feet with 13-foot-wide travel lanes and no shoulders for approximately 1,000 feet, from Kampersal Field to the Upper Charles Trail crossing. Dense vegetation is present up to the edge of pavement along much of the corridor. A vote will be held at Annual Town Meeting in May 2021 to designate South Street a Scenic Road under M.G.L. Chapter 40 Section 15C. The narrow width of the roadway and limited sight distance due to the horizontal and vertical geometry create safety concerns along the corridor.

Traffic Volumes

Automatic Traffic Recorder (ATR) counts were collected for a 24-hour period on Thursday, February 25, 2021 along South Street south of Rockland Street. Table 2 below summarizes the total daily traffic volume, percent heavy vehicles, and speeds along the roadway. Detailed ATR data are included in the Appendix.

Table 2: South Street Traffic Data

	Daily Traffic Volume¹ (Unadjusted)	% Heavy Vehicles²	Average Speed	85th Percentile Speed	10 mph Pace Speed
Northbound	1,188	14.1%	37 mph	40 mph	31-40
Southbound	1,122	13.9%	37 mph	41 mph	31-40
Total	2,310	14.0%	-	-	-

¹Unadjusted 24-hour traffic volume collected Thursday, February 25, 2021 by Transportation Data Corp.

²Commercial vehicles with 2½ tons or greater carrying capacity (2-axle, 6-tire or larger)

Pavement Condition

Based on a cursory evaluation in March 2021, the pavement is in overall good condition. Longitudinal cracking is evident along wheel paths on approximately 10 percent of the surface area, and raveling is present in the vicinity of the Fisher Street intersection. Repeated wheel loading from heavy commercial vehicle traffic would result in further deterioration of the pavement surface.

Safety

The MassDOT Interactive Mapping Portal for Analysis and Crash Tracking (IMPACT) was referenced to identify crashes involving heavy commercial vehicles between 2014 and 2018, the most recent five years of data available. During the five-year period, two such crashes were reported along South Street. On August 19, 2014, an unclassified heavy truck was involved in a rear-end crash with a light truck (van or sport-utility vehicle) along the northbound South Street approach at the STOP-sign controlled Fisher Street intersection, with no injury reported. On August 19, 2018, a passenger car on southbound South Street south of the Fisher Street intersection struck a parked truck and trailer, with a non-fatal injury resulting.

Alternate Route

The preferred alternate route for northbound heavy commercial vehicles follows Milford Street (Route 109) east from the Clark Street intersection in the Town of Medway and north on Summer Street (Route 126) in the Towns of Medway and Holliston to Washington Street in the Town of Holliston. The alternate route southbound follows the same streets in reverse order. Although the alternate route is not located entirely within the Town of Holliston, it entirely follows State numbered routes. Milford Street (Route 109) and the portion of Summer Street (Route 126) in the Town of Medway are under Town of Medway jurisdiction. The portion of Summer Street (Route 126) in the Town of Holliston is under Town of Holliston jurisdiction, and the portion of Washington Street (Route 16) along the alternate route is under MassDOT jurisdiction. A letter of support from the Town of Medway is attached to this request.

Railroad Street/Woodland Street

Railroad Street extends approximately 0.35 miles between Exchange Street to the south and Linden Street to the north. The roadway continues north as Woodland Street for approximately 0.85 miles to a signalized four-way intersection with Washington Street (Route 16). North of Washington Street, the roadway continues as High Street. The proposed HCVE extends approximately 1.1 miles along Railroad Street and Woodland Street, from the intersection of Railroad Street and Central Street on the south to the intersection of Woodland Street and Washington Street (Route 16) on the north.

The portion of Railroad Street and Woodland Street under consideration for a HCVE is classified as an Urban Collector and is under the jurisdiction of the Town of Holliston. Land use along the roadway is a combination of commercial, institutional, and single-family residential. Woodland Street provides access to Robert Adams Middle School, Fred W. Miller Elementary School, Sam Placentino Elementary School, and Holliston Country Day School and is a designated Safe Routes to School route. Woodland Street runs parallel to the Upper Charles Rail Trail and provides multiple trail access points. The intersection of Railroad Street and Central Street at the southern limit of the proposed HCVE is under all-way STOP sign control, and the intersection of Woodland Street and Washington Street (Route 16) at the northern limit of the proposed HCVE is signalized. Two uncontrolled mid-block crosswalks are located on Woodland Street at the Robert Adams Middle School and at the Sam Placentino and Fred W. Miller Elementary Schools.

The Railroad Street/Woodland Street corridor is typically approximately 26 feet wide with one 12-foot-wide travel lane and 1 foot offset in each direction but narrows to 22 feet wide with one 10-foot-wide travel lane and 1 foot offset in each direction. A sidewalk is provided along the west side of the roadway, and utility poles are located along the west side of the roadway approximately 1 foot from the edge of pavement. The narrow width of the roadway and proximity to schools and the Upper Charles Rail Trail create safety concerns along the corridor due to conflicts between heavy truck traffic and non-motorized users.

Traffic Volumes

Automatic Traffic Recorder (ATR) counts were collected for a 24-hour period on Thursday, February 25, 2021 along Woodland Street south of Lowland Street. Table 3 below summarizes the total daily traffic volume, percent heavy vehicles, and speeds along the roadway. Detailed ATR data are included in the Appendix.

Table 3: Woodland Street Traffic Data

	Daily Traffic Volume¹ (Unadjusted)	% Heavy Vehicles²	Average Speed	85th Percentile Speed	10 mph Pace Speed
Northbound	2,195	5.5%	36 mph	40 mph	31-40
Southbound	2,266	6.1%	36 mph	41 mph	31-40
Total	4,461	5.8%	-	-	-

¹Unadjusted 24-hour traffic volume collected Thursday, February 25, 2021 by Transportation Data Corp.

²Commercial vehicles with 2½ tons or greater carrying capacity (2-axle, 6-tire or larger)

Pavement Condition

Based on a cursory evaluation in March 2021, the pavement is in overall good condition. Some longitudinal cracking is evident along less than 10 percent of the surface area.

Safety

The MassDOT Interactive Mapping Portal for Analysis and Crash Tracking (IMPACT) was referenced to identify crashes involving heavy commercial vehicles between 2014 and 2018, the most recent five years of data available. During the five-year period, two such crashes were reported along Woodland Street. On April 4, 2016, an unclassified truck/trailer was involved in a rear-end crash with a passenger car at the intersection of Woodland Street and Lowland Street with no injury reported. On May 12, 2016, a passenger car was involved in a rear-end crash with a tractor trailer on Woodland Street at the driveway to Sam Placentino and Fred W. Miller Elementary Schools with a possible non-fatal injury resulting.

Alternate Route

The preferred alternate route for northbound heavy commercial vehicles follows Central Street west from the Railroad Street intersection and Washington Street (Route 16) north to the Woodland Street intersection. The alternate route southbound follows the same streets in reverse order. The proposed alternate route is entirely within the Town of Holliston and is under Town of Holliston jurisdiction.

Bullard Street

Bullard Street extends approximately 0.85 miles between Central Street to the south and Fiske Street to the north. Bullard Street is classified as a Local Street and is under the jurisdiction of the Town of Holliston. Land use along the roadway is primarily single-family residential. The intersections of Bullard Street at Central Street and Bullard Street at Fiske Street are STOP sign controlled "T" intersections; no other traffic control is located along the roadway.

Bullard Street between Central Street and Fiske Street is approximately 20 feet wide with one 10-foot-wide travel lane and no shoulder in each direction. Dense vegetation and large trees are present up to the edge of pavement along much of the corridor. Bullard Street is a designated Scenic Road under M.G.L. Chapter 40 Section 15C. The narrow width of the roadway creates safety concerns along the corridor.

Traffic Volumes

Automatic Traffic Recorder (ATR) counts were collected for a 24-hour period on Thursday, February 25, 2021 along Bullard Street north of Central Street. Table 4 below summarizes the total daily traffic volume, percent heavy vehicles, and speeds along the roadway. Detailed ATR data are included in the Appendix.

Table 4: Bullard Street Traffic Data

	Daily Traffic Volume ¹ (Unadjusted)	% Heavy Vehicles ²	Average Speed	85 th Percentile Speed	10 mph Pace Speed
Northbound	498	14.7%	34 mph	39 mph	31-40
Southbound	467	10.7%	33 mph	38 mph	31-40
Total	965	12.7%	-	-	-

¹Unadjusted 24-hour traffic volume collected Thursday, February 25, 2021 by Transportation Data Corp.

²Commercial vehicles with 2½ tons or greater carrying capacity (2-axle, 6-tire or larger)

Pavement Condition

Based on a cursory evaluation in March 2021, the pavement is in overall good condition with moderate edge cracking along the corridor due to wheel loading near the edge of pavement. Repeated wheel loading from heavy commercial vehicle traffic would result in further deterioration at the edge of pavement. In addition, heavy commercial truck traffic on Bullard Street has resulted in deterioration to the culvert carrying Dirty Meadow Brook under Bullard Street.

Safety

The MassDOT Interactive Mapping Portal for Analysis and Crash Tracking (IMPACT) was referenced to identify crashes involving heavy commercial vehicles between 2014 and 2018, the most recent five years of data available. During the five-year period, no heavy vehicle crashes were reported along Bullard Street.

Alternate Route

As previously noted, the proposed HCVE along Bullard Street is contiguous with proposed HCVEs along Fiske Street, Lowland Street, Woodland Street, and Railroad Street. The preferred alternate route for northbound heavy commercial vehicles for the combined HCVE follows Central Street west from the Bullard Street intersection and Washington Street (Route 16) north to the Woodland Street intersection. The proposed alternate route is entirely within the Town of Holliston and is under Town of Holliston jurisdiction.

Fiske Street

Fiske Street extends approximately 1.6 miles between Central Street to the west the Medway Town Line to the east, continuing as Mill Street in the Town of Sherborn. The proposed HCVE extends approximately 1.05 miles from Central Street on the west to Bullard Street on the east. Fiske Street is classified as a Local Street and is under the jurisdiction of the Town of Holliston. Land use along the roadway is primarily single-family residential. Fiske Street terminates at Central Street at a STOP-sign controlled “T” intersection; no other traffic control is located along the corridor.

Fiske Street between Central Street and Bullard Street is approximately 30 feet wide with one 15-foot-wide travel lane and no shoulder in each direction. Fiske Street is a designated Scenic Road under M.G.L. Chapter 40 Section 15C. Horizontal and vertical curvature restrict sight distance along the corridor and create safety concerns.

Traffic Volumes

Automatic Traffic Recorder (ATR) counts were collected for a 24-hour period on Thursday, February 25, 2021 along Fiske Street west of Lowland Street. Table 5 below summarizes the total daily traffic volume, percent heavy vehicles, and speeds along the roadway. Detailed ATR data are included in the Appendix.

Table 5: Fiske Street Traffic Data

	Daily Traffic Volume¹ (Unadjusted)	% Heavy Vehicles²	Average Speed	85th Percentile Speed	10 mph Pace Speed
Eastbound	865	6.8%	35 mph	40 mph	31-40
Westbound	887	13.9%	34 mph	41 mph	31-40
Total	1,752	10.4%	-	-	-

¹Unadjusted 24-hour traffic volume collected Thursday, February 25, 2021 by Transportation Data Corp.

²Commercial vehicles with 2½ tons or greater carrying capacity (2-axle, 6-tire or larger)

Pavement Condition

Based on a cursory evaluation in March 2021, the pavement is in overall poor condition. Longitudinal cracking is present along wheel paths and the roadway centerline on the majority the surface area, transverse cracking is present along much of the roadway, and raveling is present on approximately 30 percent of the surface area. Repeated wheel loading from heavy commercial vehicle traffic would result in further deterioration of the pavement surface.

Safety

The MassDOT Interactive Mapping Portal for Analysis and Crash Tracking (IMPACT) was referenced to identify crashes involving heavy commercial vehicles between 2014 and 2018, the most recent five years of data available. During the five-year period, no heavy vehicle crashes were reported along Fiske Street.

Alternate Route

As previously noted, the proposed HCVE along Fiske Street is contiguous with proposed HCVEs along Bullard Street, Lowland Street, Woodland Street, and Railroad Street. The preferred alternate route for northbound heavy commercial vehicles for the combined HCVE follows Central Street west from the Bullard Street intersection and Washington Street (Route 16) north to the Woodland Street intersection. The proposed alternate route is entirely within the Town of Holliston and is under Town of Holliston jurisdiction.

Lowland Street

Lowland Street extends approximately 0.75 miles between Woodland Street to the west and Fiske Street to the east. Lowland Street is classified as a Local Street and is under the jurisdiction of the Town of Holliston. Land use along the roadway is single-family residential for approximately 800 feet, from the Fiske Street intersection to Bogastow Brook, and industrial from Bogastow Brook to Woodland Street, including the Lowland Industrial Park. There is an existing 12-hour HCVE along Lowland Street from 7:00 p.m. to 7:00 a.m. between Fiske Street and Bogastow Brook. Lowland

Street terminates at Woodland Street to the west and Fiske Street to the east at STOP-sign controlled “T” intersections. The Upper Charles Rail Trail crosses Lowland Street approximately 450 feet east of the Woodland Street intersection; Rectangular Rapid Flashing Beacons (RRFBs) are provided at the crossing.

Lowland Street is 24 feet wide with no marked travel lanes or shoulders along most of its length. Dense vegetation is present up to the edge of pavement west of the Upper Charles River Trail and east of Bogastow Brook. The narrow width of the roadway and limited sight distance due to the horizontal geometry create safety concerns along the corridor. In addition, truck traffic along Lowland Street presents conflicts with pedestrians, cyclists, and equestrians who use Lowland Street to access the Upper Charles Rail Trail.

Traffic Volumes

Automatic Traffic Recorder (ATR) counts were collected for a 24-hour period on Thursday, February 25, 2021 along Lowland Street north of Fiske Street. Table 6 below summarizes the total daily traffic volume, percent heavy vehicles, and speeds along the roadway. Detailed ATR data are included in the Appendix.

Table 6: Lowland Street Traffic Data

	Daily Traffic Volume¹ (Unadjusted)	% Heavy Vehicles²	Average Speed	85th Percentile Speed	10 mph Pace Speed
Northbound	982	14.1%	33 mph	39 mph	31-40
Southbound	995	9.3%	35 mph	40 mph	31-40
Total	1,977	11.7%	-	-	-

¹Unadjusted 24-hour traffic volume collected Thursday, February 25, 2021 by Transportation Data Corp.

²Commercial vehicles with 2½ tons or greater carrying capacity (2-axle, 6-tire or larger)

Pavement Condition

Based on a cursory evaluation in March 2021, the pavement is in fair condition. Longitudinal cracking is evident along the centerline and wheel paths on approximately 60 percent of the surface area, and edge cracking is present intermittently along the corridor. Repeated wheel loading from heavy commercial vehicle traffic would result in further deterioration of the pavement surface.

Safety

The MassDOT Interactive Mapping Portal for Analysis and Crash Tracking (IMPACT) was referenced to identify crashes involving heavy commercial vehicles between 2014 and 2018, the most recent five years of data available. During the five-year period, one such crash was reported along South Street. On April 4, 2016, an unclassified truck/trailer was involved in a rear-end crash with a passenger car approximately 350 feet south of the intersection with Jeffrey Avenue with no injury reported.

Alternate Route

As previously noted, the proposed HCVE along Lowland Street is contiguous with proposed HCVEs along Bullard Street, Fiske Street, Woodland Street, and Railroad Street. The preferred alternate route for northbound heavy commercial vehicles for the combined HCVE follows Central Street west from the Bullard Street intersection and Washington Street (Route 16) north to the Woodland Street intersection. In addition, heavy commercial vehicle traffic would access the Lowland Industrial Park via Jeffrey Avenue, Rogers Road, and Whitney Street to Washington Street (Route 16). The proposed alternate routes are entirely within the Town of Holliston and are under Town of Holliston jurisdiction.

High Street

High Street extends approximately 0.85 miles between Washington Street (Route 16) to the south and Concord Street (Route 126) to the north. High Street is classified as an Urban Collector and is under Town of Holliston jurisdiction. Land use along the roadway is primarily single-family residential. High Street terminates at Concord Street (Route 126) at a STOP-sign controlled "T" intersection. The southern terminus of High Street at Washington Street (Route 16) is signalized; High Street then continues south as Woodland Street. The intermediate intersections of High Street at Jennings Road and High Street at Locust Street are all-way STOP controlled. Sight distance at the High Street approach to its intersection with Concord Street (Route 126) is obscured by existing vegetation and the geometry of the approach. An existing 24-hour HCVE is on file for High Street (Permit #E-B-136-7069); however, based on previous correspondence between the Town and MassDOT it is not clear if the Town followed the proper HCVE study process.

High Street is 22 feet wide with one 11-foot-wide travel lane and no shoulder in each direction along most of its length. A sidewalk is provided on the eastern side of the roadway between Washington Street (Route 16) and Copper Lane. Large trees and stone retaining walls are present up to the edge of pavement along much of the corridor. High Street is a designated Scenic Road under M.G.L. Chapter 40 Section 15C, a designated Safe Routes to School route, and a Walking School Bus route. The narrow width of the roadway and limited sight distance due to the horizontal geometry create safety concerns along the corridor.

Traffic Volumes

Automatic Traffic Recorder (ATR) counts were collected for a 24-hour period on Thursday, February 25, 2021 along High Street north of Washington Street (Route 16). Table 7 below summarizes the total daily traffic volume, percent heavy vehicles, and speeds along the roadway. Detailed ATR data are included in the Appendix.

Table 7: High Street Traffic Data

	Daily Traffic Volume ¹ (Unadjusted)	% Heavy Vehicles ²	Average Speed	85 th Percentile Speed	10 mph Pace Speed
Northbound	1,196	8.2%	30 mph	34 mph	26-35
Southbound	1,173	6.1%	31 mph	35 mph	26-35
Total	2,369	7.2%	-	-	-

¹Unadjusted 24-hour traffic volume collected Thursday, February 25, 2021 by Transportation Data Corp.

²Commercial vehicles with 2½ tons or greater carrying capacity (2-axle, 6-tire or larger)

Pavement Condition

Based on a cursory evaluation in March 2021, the pavement is in overall good condition. Longitudinal cracking is evident along wheel paths and the roadway centerline in the vicinity of the Silver Lane and Locust Street intersections. Transverse cracking was also observed south of Silver Lane. Repeated wheel loading from heavy commercial vehicle traffic would result in further deterioration of the pavement surface.

Safety

The MassDOT Interactive Mapping Portal for Analysis and Crash Tracking (IMPACT) was referenced to identify crashes involving heavy commercial vehicles between 2014 and 2018, the most recent five years of data available. During the five-year period, no crashes were reported involving heavy vehicles along High Street.

Alternate Route

The preferred alternate route for northbound heavy commercial vehicles follows Washington Street (Route 16) west from the High Street intersection to Concord Street (Route 126), then north on Concord Street (Route 126) to the High Street intersection. The alternate route southbound follows the same streets in reverse order. The alternate route is located entirely within the Town of Holliston and entirely follows State numbered routes. The portion of Washington Street (Route 16) along the alternate route is under Town of Holliston jurisdiction. The portion of Concord Street (Route 126) along the alternate route is under Town of Holliston jurisdiction for approximately 900 feet from Washington Street (Route 16) to Baker Street, and under MassDOT jurisdiction from Baker Street to High Street.

Locust Street

Locust Street extends approximately 0.55 miles between Washington Street (Route 16) to the south and High Street to the north. Locust Street is classified as a Local Street and is under Town of Holliston jurisdiction. Land use along the roadway is primarily single-family residential. Locust Street terminates at Washington Street (Route 16) at a STOP-sign controlled “T” intersection. Its northern terminus with High Street is an all-way STOP controlled intersection. No other traffic controls are present along the corridor. An existing 24-hour HCVE is on file for High Street; however, based on previous correspondence between the Town and MassDOT it is not clear if the Town followed the proper HCVE study process.

Locust Street is 20 feet wide with no travel lanes or shoulders marked along its length. Dense vegetation is present up to the edge of pavement along much of the corridor. Locust Street is a designated Scenic Road under M.G.L. Chapter 40 Section 15C. The narrow width of the roadway and limited sight distance due to the horizontal and vertical geometry create safety concerns along the corridor.

Traffic Volumes

Automatic Traffic Recorder (ATR) counts were collected for a 24-hour period on Thursday, February 25, 2021 along Locust Street north of Washington Street (Route 16). Table 8 below summarizes the total daily traffic volume, percent heavy vehicles, and speeds along the roadway. Detailed ATR data are included in the Appendix.

Table 8: Locust Street Traffic Data

	Daily Traffic Volume¹ (Unadjusted)	% Heavy Vehicles²	Average Speed	85th Percentile Speed	10 mph Pace Speed
Northbound	436	5.5%	29 mph	33 mph	26-35
Southbound	311	8.7%	32 mph	37 mph	31-40
Total	747	6.8%	-	-	-

¹Unadjusted 24-hour traffic volume collected Thursday, February 25, 2021 by Transportation Data Corp.

²Commercial vehicles with 2½ tons or greater carrying capacity (2-axle, 6-tire or larger)

Pavement Condition

Based on a cursory evaluation in March 2021, the pavement is in fair condition. Longitudinal cracking is evident along the centerline along most of the corridor, as is rutting along the wheel paths and edge cracking. Alligator cracking is present in the vicinity of the Washington Street (Route 16) intersection. Repeated wheel loading from heavy commercial vehicle traffic would result in further deterioration of the pavement surface.

Safety

The MassDOT Interactive Mapping Portal for Analysis and Crash Tracking (IMPACT) was referenced to identify crashes involving heavy commercial vehicles between 2014 and 2018, the most recent five years of data available. During the five-year period, no crashes were reported involving heavy vehicles along Locust Street.

Alternate Route

As previously noted, the proposed HCVE along Locust Street is contiguous with proposed HCVE along High Street. The preferred alternate route for northbound heavy commercial vehicles follows Washington Street (Route 16) west from the Locust Street intersection to Concord Street (Route 126), then north on Concord Street (Route 126) to the High Street intersection. The alternate route southbound follows the same streets in reverse order. The alternate route is located entirely within the Town of Holliston and entirely follows State numbered routes. The portion of Washington Street (Route 16) along the alternate route is under Town of Holliston jurisdiction. The portion of Concord Street (Route 126) along the alternate route is under Town of Holliston jurisdiction for approximately 900 feet from Washington Street (Route 16) to Baker

Street, and under MassDOT jurisdiction from Baker Street to High Street.

Thank you for considering the Town of Holliston's request for Heavy Commercial Vehicle Exclusions on the above roadways. If you require more information or have any questions, please contact myself at (508) 429-0608, or Michael Pompili at McMahon Associates, (401) 617-5585.

Sincerely,

Travis Ahern, Town Administrator

Attachments

Transportation Data Corporation

Mario Perone, mperone1@verizon.net
tel (781) 587-0086 cell (781) 439-4999

Page 1

South Street
south of Rockland Street
City, State: Holliston, MA
Client: McM/M. Pompili
Northbound

05388Aclass
Site Code: Y-21015.11

Start Time	Bikes	Cars & Trailers	2 Axle Long	Buses	2 Axle 6 Tire	3 Axle Single	4 Axle Single	<5 Axl Double	5 Axle Double	>6 Axl Double	<6 Axl Multi	6 Axle Multi	>6 Axl Multi	Total
02/25/21	0	0	0	0	1	0	0	0	0	0	0	0	0	1
01:00	0	3	0	0	0	0	0	0	0	0	0	0	0	3
02:00	0	1	0	0	0	0	0	0	0	0	0	0	0	1
03:00	0	0	0	0	0	0	0	0	0	0	0	0	0	0
04:00	0	3	1	0	0	0	0	0	0	0	0	0	0	4
05:00	0	17	4	1	2	0	0	0	0	0	0	0	0	24
06:00	0	79	19	3	16	0	0	0	1	0	0	0	0	118
07:00	0	105	37	3	27	1	0	3	0	0	0	0	0	176
08:00	0	83	24	1	18	0	0	0	2	0	0	0	0	128
09:00	0	65	15	1	8	1	0	0	0	0	0	0	0	90
10:00	1	41	11	0	7	0	0	0	0	0	0	0	0	60
11:00	0	44	12	1	9	0	0	0	0	0	0	0	0	66
12 PM	1	52	10	0	6	0	0	1	0	0	0	0	0	70
13:00	2	23	5	0	4	0	0	0	0	0	0	0	0	34
14:00	0	33	2	2	8	1	0	0	0	0	0	0	0	46
15:00	2	48	8	0	4	0	0	0	0	0	0	0	0	62
16:00	3	54	12	0	7	0	0	0	0	0	0	0	0	76
17:00	1	43	9	0	10	0	0	1	0	0	0	0	0	64
18:00	0	40	10	0	8	0	0	0	0	0	0	0	0	58
19:00	0	47	7	0	3	0	0	0	0	0	0	0	0	57
20:00	0	10	5	0	1	0	0	0	1	0	0	0	0	17
21:00	0	12	2	0	2	0	0	0	0	0	0	0	0	16
22:00	0	8	0	0	1	0	0	0	0	0	0	0	0	9
23:00	0	7	0	0	1	0	0	0	0	0	0	0	0	8
Day Total	10	818	193	12	143	3	0	5	4	0	0	0	0	1188
Percent	0.8%	68.9%	16.2%	1.0%	12.0%	0.3%	0.0%	0.4%	0.3%	0.0%	0.0%	0.0%	0.0%	
AM Peak	10:00	07:00	07:00	06:00	07:00	07:00		07:00	08:00					07:00
Vol.	1	105	37	3	27	1		3	2					176
PM Peak	16:00	16:00	16:00	14:00	17:00	14:00		12:00	20:00					16:00
Vol.	3	54	12	2	10	1		1	1					76
Grand Total	10	818	193	12	143	3	0	5	4	0	0	0	0	1188
Percent	0.8%	68.9%	16.2%	1.0%	12.0%	0.3%	0.0%	0.4%	0.3%	0.0%	0.0%	0.0%	0.0%	

Transportation Data Corporation

Mario Perone, mperone1@verizon.net
tel (781) 587-0086 cell (781) 439-4999

Page 2

South Street
south of Rockland Street
City, State: Holliston, MA
Client: McM/M. Pompili
Southbound

05388Aclass
Site Code: Y-21015.11

Start Time	Bikes	Cars & Trailers	2 Axle Long	Buses	2 Axle 6 Tire	3 Axle Single	4 Axle Single	<5 Axl Double	5 Axle Double	>6 Axl Double	<6 Axl Multi	6 Axle Multi	>6 Axl Multi	Total
02/25/21	0	4	0	0	1	0	0	0	1	0	0	0	0	6
01:00	0	2	0	0	0	0	0	0	0	0	0	0	0	2
02:00	0	1	1	1	0	0	0	0	0	0	0	0	0	3
03:00	0	1	0	0	0	0	0	0	0	0	0	0	0	1
04:00	0	2	0	0	0	0	0	0	0	0	0	0	0	2
05:00	0	6	1	1	1	0	0	0	0	0	0	0	0	9
06:00	0	24	2	0	4	0	0	0	1	0	0	0	0	31
07:00	0	36	13	0	8	0	0	0	0	0	0	0	0	57
08:00	0	26	12	2	5	0	0	0	0	0	0	0	0	45
09:00	0	30	14	0	8	0	0	0	0	0	0	0	0	52
10:00	1	21	9	0	3	0	0	0	0	0	0	0	0	34
11:00	1	48	19	0	10	1	0	0	0	0	0	0	0	79
12 PM	1	44	12	0	8	0	0	0	0	0	0	0	0	65
13:00	0	41	20	0	11	0	0	2	1	0	0	0	0	75
14:00	0	72	23	1	14	0	0	0	0	0	0	0	0	110
15:00	0	95	30	1	18	0	0	2	1	0	0	0	0	147
16:00	1	125	27	0	16	0	0	0	0	0	0	0	0	169
17:00	1	101	20	1	21	0	0	1	0	0	0	0	0	145
18:00	0	45	4	0	7	0	0	0	0	0	0	0	0	56
19:00	0	60	13	0	6	0	0	0	0	0	0	0	0	79
20:00	0	15	4	0	8	0	0	0	0	0	0	0	0	27
21:00	0	11	2	0	3	0	0	0	0	0	0	0	0	16
22:00	0	4	1	0	1	0	0	0	0	0	0	0	0	6
23:00	0	6	0	0	0	0	0	0	0	0	0	0	0	6
Day Total	5	820	227	7	153	1	0	5	4	0	0	0	0	1222
Percent	0.4%	67.1%	18.6%	0.6%	12.5%	0.1%	0.0%	0.4%	0.3%	0.0%	0.0%	0.0%	0.0%	
AM Peak	10:00	11:00	11:00	08:00	11:00	11:00			00:00					11:00
Vol.	1	48	19	2	10	1			1					79
PM Peak	12:00	16:00	15:00	14:00	17:00			13:00	13:00					16:00
Vol.	1	125	30	1	21			2	1					169
Grand Total	5	820	227	7	153	1	0	5	4	0	0	0	0	1222
Percent	0.4%	67.1%	18.6%	0.6%	12.5%	0.1%	0.0%	0.4%	0.3%	0.0%	0.0%	0.0%	0.0%	

Transportation Data Corporation

Mario Perone, mperone1@verizon.net
tel (781) 587-0086 cell (781) 439-4999

Page 1

South Street
south of Rockland Street
City, State: Holliston, MA
Client: McM/M. Pompili

05388ASPEED
Site Code: Y-21015.11

Northbound

Start Time	15	16	21	26	31	36	41	46	51	56	61	66	71	Total	85th Percent	95th Percent
02/25/21	0	0	0	0	1	0	0	0	0	0	0	0	0	1	34	34
01:00	0	0	0	0	1	0	1	1	0	0	0	0	0	3	47	49
02:00	0	0	0	1	0	0	0	0	0	0	0	0	0	1	29	29
03:00	0	0	0	0	0	0	0	0	0	0	0	0	0	0	*	*
04:00	0	0	0	0	1	1	2	0	0	0	0	0	0	4	43	44
05:00	1	0	1	8	8	4	2	0	0	0	0	0	0	24	37	41
06:00	5	0	6	20	45	30	10	2	0	0	0	0	0	118	39	43
07:00	3	0	5	31	64	52	16	5	0	0	0	0	0	176	39	43
08:00	2	1	5	18	50	38	12	2	0	0	0	0	0	128	39	43
09:00	4	0	3	8	36	33	6	0	0	0	0	0	0	90	38	41
10:00	5	2	2	5	13	25	5	3	0	0	0	0	0	60	39	44
11:00	0	0	2	5	22	30	7	0	0	0	0	0	0	66	39	42
12 PM	3	0	1	6	29	26	3	2	0	0	0	0	0	70	38	42
13:00	2	0	2	4	11	13	2	0	0	0	0	0	0	34	38	40
14:00	4	0	2	5	18	12	3	2	0	0	0	0	0	46	39	44
15:00	8	0	4	5	17	20	6	0	0	2	0	0	0	62	39	44
16:00	6	1	0	6	25	26	12	0	0	0	0	0	0	76	40	43
17:00	4	0	2	10	22	20	6	0	0	0	0	0	0	64	39	42
18:00	1	0	3	7	20	18	8	1	0	0	0	0	0	58	40	43
19:00	1	0	1	13	16	19	6	0	1	0	0	0	0	57	39	43
20:00	0	0	1	4	5	5	1	1	0	0	0	0	0	17	39	45
21:00	1	0	0	1	6	7	1	0	0	0	0	0	0	16	38	40
22:00	0	0	0	1	5	3	0	0	0	0	0	0	0	9	37	39
23:00	0	0	0	0	0	5	1	2	0	0	0	0	0	8	47	49
Total	50	4	40	158	415	387	110	21	1	2	0	0	0	1188		
Percent	4.2%	0.3%	3.4%	13.3%	34.9%	32.6%	9.3%	1.8%	0.1%	0.2%	0.0%	0.0%	0.0%			
AM Peak	06:00	10:00	06:00	07:00	07:00	07:00	07:00	07:00						07:00		
Vol.	5	2	6	31	64	52	16	5						176		
PM Peak	15:00	16:00	15:00	19:00	12:00	12:00	16:00	12:00	19:00	15:00				16:00		
Vol.	8	1	4	13	29	26	12	2	1	2				76		
Grand Total	50	4	40	158	415	387	110	21	1	2	0	0	0	1188		
Percent	4.2%	0.3%	3.4%	13.3%	34.9%	32.6%	9.3%	1.8%	0.1%	0.2%	0.0%	0.0%	0.0%			

15th Percentile : 27 MPH
50th Percentile : 34 MPH
85th Percentile : 39 MPH
95th Percentile : 43 MPH

Stats 10 MPH Pace Speed : 31-40 MPH

Number of Vehicles > 30 MPH : 936
Percent of Vehicles > 30 MPH : 78.8%
Mean Speed(Average) : 34 MPH

Transportation Data Corporation

Mario Perone, mperone1@verizon.net
tel (781) 587-0086 cell (781) 439-4999

South Street
south of Rockland Street
City, State: Holliston, MA
Client: McM/M. Pompili
Southbound

05388ASPEED
Site Code: Y-21015.11

Start Time	15	16	21	26	31	36	41	46	51	56	61	66	71	Total	85th Percent	95th Percent
02/25/21	0	0	0	1	0	4	1	0	0	0	0	0	0	6	40	43
01:00	0	0	0	0	0	0	1	1	0	0	0	0	0	2	48	49
02:00	0	0	0	1	2	0	0	0	0	0	0	0	0	3	33	34
03:00	0	0	0	0	1	0	0	0	0	0	0	0	0	1	34	34
04:00	0	0	0	0	1	0	1	0	0	0	0	0	0	2	43	44
05:00	0	0	0	2	6	1	0	0	0	0	0	0	0	9	34	37
06:00	3	0	0	4	10	9	4	1	0	0	0	0	0	31	40	44
07:00	5	1	1	8	17	12	9	3	1	0	0	0	0	57	42	46
08:00	1	0	0	3	28	9	4	0	0	0	0	0	0	45	38	42
09:00	4	0	4	6	17	17	3	1	0	0	0	0	0	52	38	42
10:00	0	1	0	3	12	13	3	1	1	0	0	0	0	34	39	46
11:00	2	0	1	8	23	35	9	1	0	0	0	0	0	79	39	43
12 PM	3	0	2	5	19	26	10	0	0	0	0	0	0	65	40	43
13:00	2	0	1	11	29	26	4	1	1	0	0	0	0	75	38	42
14:00	4	2	1	10	43	35	14	0	0	1	0	0	0	110	39	43
15:00	3	0	8	9	61	45	15	4	2	0	0	0	0	147	39	44
16:00	1	1	2	15	69	67	14	0	0	0	0	0	0	169	39	41
17:00	4	0	2	13	67	45	13	1	0	0	0	0	0	145	39	42
18:00	2	1	0	12	18	19	3	1	0	0	0	0	0	56	38	42
19:00	2	1	1	9	16	26	17	7	0	0	0	0	0	79	43	47
20:00	0	0	0	3	17	4	3	0	0	0	0	0	0	27	38	42
21:00	0	0	0	3	7	5	1	0	0	0	0	0	0	16	38	40
22:00	0	0	0	1	2	2	0	1	0	0	0	0	0	6	45	48
23:00	0	0	0	0	1	0	3	2	0	0	0	0	0	6	47	49
Total	36	7	23	127	466	400	132	25	5	1	0	0	0	1222		
Percent	2.9%	0.6%	1.9%	10.4%	38.1%	32.7%	10.8%	2.0%	0.4%	0.1%	0.0%	0.0%	0.0%			
AM Peak	07:00	07:00	09:00	07:00	08:00	11:00	07:00	07:00	07:00					11:00		
Vol.	5	1	4	8	28	35	9	3	1					79		
PM Peak	14:00	14:00	15:00	16:00	16:00	16:00	19:00	19:00	15:00	14:00				16:00		
Vol.	4	2	8	15	69	67	17	7	2	1				169		
Grand Total	36	7	23	127	466	400	132	25	5	1	0	0	0	1222		
Percent	2.9%	0.6%	1.9%	10.4%	38.1%	32.7%	10.8%	2.0%	0.4%	0.1%	0.0%	0.0%	0.0%			

15th Percentile : 29 MPH
50th Percentile : 34 MPH
85th Percentile : 39 MPH
95th Percentile : 43 MPH

Stats 10 MPH Pace Speed : 31-40 MPH

Number of Vehicles > 30 MPH : 1029
Percent of Vehicles > 30 MPH : 84.2%
Mean Speed(Average) : 35 MPH

Transportation Data Corporation

Mario Perone, mperone1@verizon.net
tel (781) 587-0086 cell (781) 439-4999

Page 1

Woodland Street
south of Lowland Street
City, State: Holliston, MA
Client: McM/M. Pompili
Northbound

05388Bclass
Site Code: Y-21015.11

Start Time	Bikes	Cars & Trailers	2 Axle Long	Buses	2 Axle 6 Tire	3 Axle Single	4 Axle Single	<5 Axl Double	5 Axle Double	>6 Axl Double	<6 Axl Multi	6 Axle Multi	>6 Axl Multi	Total
02/25/21	0	3	1	0	0	0	0	0	0	0	0	0	0	4
01:00	0	1	1	0	0	0	0	0	0	0	0	0	0	2
02:00	0	0	0	0	0	0	0	0	0	0	0	0	0	0
03:00	0	3	0	0	0	0	0	0	0	0	0	0	0	3
04:00	0	26	10	0	1	0	0	0	0	0	0	0	0	37
05:00	0	64	27	0	5	1	0	0	0	0	0	0	0	97
06:00	0	115	40	0	6	0	0	0	0	0	0	0	0	161
07:00	0	153	39	7	12	0	0	0	1	0	0	0	0	212
08:00	3	178	34	2	4	1	0	0	0	0	0	0	0	222
09:00	0	87	39	0	2	0	0	1	0	0	0	0	0	129
10:00	0	61	17	0	5	0	0	0	0	0	0	0	0	83
11:00	0	81	27	1	5	1	0	0	0	0	0	0	0	115
12 PM	0	102	32	1	10	1	0	0	0	0	0	0	0	146
13:00	2	134	30	9	7	2	0	2	1	0	0	0	0	187
14:00	1	137	37	2	9	1	0	0	0	0	0	0	0	187
15:00	2	135	29	2	10	0	0	0	0	0	0	0	0	178
16:00	0	114	23	0	3	0	0	0	0	0	0	0	0	140
17:00	0	92	23	0	3	0	0	0	0	0	0	0	0	118
18:00	0	53	10	0	1	0	0	0	0	0	0	0	0	64
19:00	0	35	6	0	1	0	0	0	0	0	0	0	0	42
20:00	0	32	1	0	0	0	0	0	0	0	0	0	0	33
21:00	0	13	2	0	0	0	0	0	0	0	0	0	0	15
22:00	0	10	5	0	0	0	0	0	0	0	0	0	0	15
23:00	0	4	1	0	0	0	0	0	0	0	0	0	0	5
Day Total	8	1633	434	24	84	7	0	3	2	0	0	0	0	2195
Percent	0.4%	74.4%	19.8%	1.1%	3.8%	0.3%	0.0%	0.1%	0.1%	0.0%	0.0%	0.0%	0.0%	
AM Peak	08:00	08:00	06:00	07:00	07:00	05:00		09:00	07:00					08:00
Vol.	3	178	40	7	12	1		1	1					222
PM Peak	13:00	14:00	14:00	13:00	12:00	13:00		13:00	13:00					13:00
Vol.	2	137	37	9	10	2		2	1					187
Grand Total	8	1633	434	24	84	7	0	3	2	0	0	0	0	2195
Percent	0.4%	74.4%	19.8%	1.1%	3.8%	0.3%	0.0%	0.1%	0.1%	0.0%	0.0%	0.0%	0.0%	

Transportation Data Corporation

Mario Perone, mperone1@verizon.net
tel (781) 587-0086 cell (781) 439-4999

Woodland Street
south of Lowland Street
City, State: Holliston, MA
Client: McM/M. Pompili
Southbound

05388Bclass
Site Code: Y-21015.11

Start Time	Bikes	Cars & Trailers	2 Axle Long	Buses	2 Axle 6 Tire	3 Axle Single	4 Axle Single	<5 Axl Double	5 Axle Double	>6 Axl Double	<6 Axl Multi	6 Axle Multi	>6 Axl Multi	Total
02/25/21	0	7	0	0	0	0	0	0	0	0	0	0	0	7
01:00	0	11	1	0	0	0	0	0	0	0	0	0	0	12
02:00	0	1	0	0	0	0	0	0	0	0	0	0	0	1
03:00	0	2	0	0	0	0	0	0	0	0	0	0	0	2
04:00	0	3	0	0	0	0	0	0	0	0	0	0	0	3
05:00	0	5	1	0	0	0	0	0	0	0	0	0	0	6
06:00	1	37	6	1	2	0	0	0	1	0	0	0	0	48
07:00	1	115	35	12	6	0	0	1	0	0	0	0	0	170
08:00	0	114	31	3	6	1	0	1	0	0	0	0	0	156
09:00	0	48	26	1	6	0	0	0	0	0	0	0	0	81
10:00	0	52	12	0	5	1	0	1	0	0	0	0	0	71
11:00	0	65	26	0	5	1	0	0	0	0	0	0	0	97
12 PM	0	126	45	3	8	0	0	0	0	0	0	0	0	182
13:00	2	103	30	5	5	0	0	0	0	0	0	0	0	145
14:00	1	149	50	5	17	0	0	0	0	0	0	0	0	222
15:00	3	202	67	4	10	0	0	0	0	0	0	0	0	286
16:00	2	197	58	1	9	2	0	0	0	0	0	0	0	269
17:00	0	174	30	0	5	0	0	0	0	0	0	0	0	209
18:00	0	108	22	0	1	0	0	0	0	0	0	0	0	131
19:00	0	53	11	0	5	0	0	0	0	0	0	0	0	69
20:00	0	39	4	0	1	0	0	0	0	0	0	0	0	44
21:00	0	22	0	0	1	0	0	0	0	0	0	0	0	23
22:00	0	15	2	0	1	0	0	0	0	0	0	0	0	18
23:00	0	10	3	0	1	0	0	0	0	0	0	0	0	14
Day Total	10	1658	460	35	94	5	0	3	1	0	0	0	0	2266
Percent	0.4%	73.2%	20.3%	1.5%	4.1%	0.2%	0.0%	0.1%	0.0%	0.0%	0.0%	0.0%	0.0%	
AM Peak	06:00	07:00	07:00	07:00	07:00	08:00		07:00	06:00					07:00
Vol.	1	115	35	12	6	1		1	1					170
PM Peak	15:00	15:00	15:00	13:00	14:00	16:00								15:00
Vol.	3	202	67	5	17	2								286
Grand Total	10	1658	460	35	94	5	0	3	1	0	0	0	0	2266
Percent	0.4%	73.2%	20.3%	1.5%	4.1%	0.2%	0.0%	0.1%	0.0%	0.0%	0.0%	0.0%	0.0%	

Transportation Data Corporation

Mario Perone, mperone1@verizon.net
tel (781) 587-0086 cell (781) 439-4999

Page 1

Woodland Street
south of Lowland Street
City, State: Holliston, MA
Client: McM/M. Pompili
Northbound

05388Bspeed
Site Code: Y-21015.11

Start Time	15	16	21	26	31	36	41	46	51	56	61	66	71	Total	85th Percent	95th Percent
02/25/21	0	0	0	1	0	2	1	0	0	0	0	0	0	4	42	44
01:00	0	0	0	0	0	1	1	0	0	0	0	0	0	2	43	44
02:00	0	0	0	0	0	0	0	0	0	0	0	0	0	0	*	*
03:00	0	0	0	0	2	1	0	0	0	0	0	0	0	3	37	39
04:00	0	0	0	0	6	23	8	0	0	0	0	0	0	37	41	43
05:00	0	0	0	1	24	58	14	0	0	0	0	0	0	97	39	43
06:00	0	0	0	2	23	98	37	1	0	0	0	0	0	161	41	44
07:00	2	1	0	2	47	121	34	5	0	0	0	0	0	212	41	44
08:00	4	0	2	6	51	130	28	0	1	0	0	0	0	222	39	43
09:00	0	0	0	0	35	73	18	2	1	0	0	0	0	129	40	44
10:00	0	0	0	3	17	46	16	1	0	0	0	0	0	83	41	44
11:00	0	0	0	3	30	60	18	3	0	1	0	0	0	115	41	44
12 PM	0	1	1	5	43	70	23	3	0	0	0	0	0	146	40	44
13:00	2	1	4	4	60	81	31	4	0	0	0	0	0	187	41	44
14:00	4	0	0	7	57	92	26	1	0	0	0	0	0	187	39	43
15:00	4	0	1	7	52	88	25	1	0	0	0	0	0	178	39	43
16:00	4	0	0	4	21	78	31	2	0	0	0	0	0	140	41	44
17:00	1	0	0	4	28	74	10	1	0	0	0	0	0	118	39	42
18:00	0	0	0	3	19	35	6	1	0	0	0	0	0	64	39	43
19:00	1	0	0	3	18	17	3	0	0	0	0	0	0	42	39	41
20:00	0	0	0	2	10	16	5	0	0	0	0	0	0	33	40	43
21:00	0	0	0	0	3	6	6	0	0	0	0	0	0	15	43	44
22:00	0	0	0	1	4	4	6	0	0	0	0	0	0	15	43	44
23:00	0	0	0	0	1	2	2	0	0	0	0	0	0	5	43	44
Total	22	3	8	58	551	1176	349	25	2	1	0	0	0	2195		
Percent	1.0%	0.1%	0.4%	2.6%	25.1%	53.6%	15.9%	1.1%	0.1%	0.0%	0.0%	0.0%	0.0%			
AM Peak	08:00	07:00	08:00	08:00	08:00	08:00	06:00	07:00	08:00	11:00				08:00		
Vol.	4	1	2	6	51	130	37	5	1	1				222		
PM Peak	14:00	12:00	13:00	14:00	13:00	14:00	13:00	13:00						13:00		
Vol.	4	1	4	7	60	92	31	4						187		
Grand Total	22	3	8	58	551	1176	349	25	2	1	0	0	0	2195		
Percent	1.0%	0.1%	0.4%	2.6%	25.1%	53.6%	15.9%	1.1%	0.1%	0.0%	0.0%	0.0%	0.0%			

15th Percentile : 32 MPH
50th Percentile : 36 MPH
85th Percentile : 40 MPH
95th Percentile : 43 MPH

Stats 10 MPH Pace Speed : 31-40 MPH

Number of Vehicles > 30 MPH : 2104
Percent of Vehicles > 30 MPH : 95.9%
Mean Speed(Average) : 37 MPH

Transportation Data Corporation

Mario Perone, mperone1@verizon.net
tel (781) 587-0086 cell (781) 439-4999

Page 2

Woodland Street
south of Lowland Street
City, State: Holliston, MA
Client: McM/M. Pompili
Southbound

05388Bspeed
Site Code: Y-21015.11

Start Time	15	16	21	26	31	36	41	46	51	56	61	66	71	Total	85th Percent	95th Percent
02/25/21	0	0	0	1	3	2	0	1	0	0	0	0	0	7	39	48
01:00	0	0	0	0	2	6	2	2	0	0	0	0	0	12	45	48
02:00	0	0	0	0	0	1	0	0	0	0	0	0	0	1	39	39
03:00	0	0	0	0	0	0	1	0	1	0	0	0	0	2	53	54
04:00	0	0	0	1	1	1	0	0	0	0	0	0	0	3	37	39
05:00	0	0	1	1	1	2	1	0	0	0	0	0	0	6	40	43
06:00	3	0	0	2	12	20	10	1	0	0	0	0	0	48	41	44
07:00	2	0	1	13	72	62	17	3	0	0	0	0	0	170	39	43
08:00	1	0	1	3	52	83	14	2	0	0	0	0	0	156	39	42
09:00	0	0	0	2	22	46	11	0	0	0	0	0	0	81	39	43
10:00	0	0	0	0	22	31	17	1	0	0	0	0	0	71	42	44
11:00	1	0	0	1	26	55	13	1	0	0	0	0	0	97	39	43
12 PM	1	0	2	12	60	67	36	4	0	0	0	0	0	182	41	44
13:00	2	1	0	9	38	62	32	1	0	0	0	0	0	145	41	44
14:00	0	0	3	16	57	103	38	5	0	0	0	0	0	222	41	44
15:00	4	0	0	5	72	157	45	3	0	0	0	0	0	286	40	43
16:00	2	0	2	7	56	144	53	5	0	0	0	0	0	269	41	44
17:00	0	0	0	9	55	108	36	1	0	0	0	0	0	209	40	43
18:00	0	0	0	3	28	69	29	2	0	0	0	0	0	131	41	44
19:00	1	0	1	1	22	34	7	3	0	0	0	0	0	69	39	44
20:00	1	0	0	2	11	21	9	0	0	0	0	0	0	44	41	43
21:00	0	0	0	0	6	6	7	3	1	0	0	0	0	23	45	49
22:00	0	0	0	0	5	5	6	2	0	0	0	0	0	18	44	47
23:00	0	0	0	1	6	2	2	3	0	0	0	0	0	14	46	48
Total	18	1	11	89	629	1087	386	43	2	0	0	0	0	2266		
Percent	0.8%	0.0%	0.5%	3.9%	27.8%	48.0%	17.0%	1.9%	0.1%	0.0%	0.0%	0.0%	0.0%			
AM Peak	06:00		05:00	07:00	07:00	08:00	07:00	07:00	03:00					07:00		
Vol.	3		1	13	72	83	17	3	1					170		
PM Peak	15:00	13:00	14:00	14:00	15:00	15:00	16:00	14:00	21:00					15:00		
Vol.	4	1	3	16	72	157	53	5	1					286		
Grand Total	18	1	11	89	629	1087	386	43	2	0	0	0	0	2266		
Percent	0.8%	0.0%	0.5%	3.9%	27.8%	48.0%	17.0%	1.9%	0.1%	0.0%	0.0%	0.0%	0.0%			

15th Percentile : 31 MPH
50th Percentile : 36 MPH
85th Percentile : 41 MPH
95th Percentile : 44 MPH

Stats 10 MPH Pace Speed : 31-40 MPH

Number of Vehicles > 30 MPH : 2147
Percent of Vehicles > 30 MPH : 94.7%
Mean Speed(Average) : 37 MPH

Mario Perone, mperone1@verizon.net

tel (781) 587-0086 cell (781) 439-4999

#137 Bullard Street
north of Central Street
City, State: Holliston, MA
Client: McM/M. Pompili

05388Cvolume
Site Code: Y-21015.11

Start Time	25-Feb-21	NB		SB		Combined		26-Feb	NB		SB		Combined	
	Thu	A.M.	P.M.	A.M.	P.M.	A.M.	P.M.		Fri	A.M.	P.M.	A.M.	P.M.	A.M.
12:00		0	7	2	8	2	15		*	*	*	*	*	*
12:15		0	11	2	13	2	24		*	*	*	*	*	*
12:30		0	11	0	6	0	17		*	*	*	*	*	*
12:45		1	12	0	4	1	16		*	*	*	*	*	*
01:00		0	7	0	9	0	16		*	*	*	*	*	*
01:15		0	5	0	5	0	10		*	*	*	*	*	*
01:30		1	6	0	5	1	11		*	*	*	*	*	*
01:45		0	8	0	5	0	13		*	*	*	*	*	*
02:00		0	9	0	6	0	15		*	*	*	*	*	*
02:15		0	8	0	6	0	14		*	*	*	*	*	*
02:30		0	13	0	14	0	27		*	*	*	*	*	*
02:45		0	12	0	18	0	30		*	*	*	*	*	*
03:00		0	9	0	12	0	21		*	*	*	*	*	*
03:15		0	10	0	15	0	25		*	*	*	*	*	*
03:30		0	10	0	17	0	27		*	*	*	*	*	*
03:45		0	11	0	10	0	21		*	*	*	*	*	*
04:00		0	5	1	14	1	19		*	*	*	*	*	*
04:15		0	11	0	16	0	27		*	*	*	*	*	*
04:30		2	10	1	15	3	25		*	*	*	*	*	*
04:45		2	2	0	10	2	12		*	*	*	*	*	*
05:00		2	12	1	13	3	25		*	*	*	*	*	*
05:15		3	10	1	11	4	21		*	*	*	*	*	*
05:30		9	10	0	7	9	17		*	*	*	*	*	*
05:45		2	8	0	8	2	16		*	*	*	*	*	*
06:00		7	2	1	4	8	6		*	*	*	*	*	*
06:15		11	4	0	7	11	11		*	*	*	*	*	*
06:30		8	9	7	11	15	20		*	*	*	*	*	*
06:45		18	6	5	10	23	16		*	*	*	*	*	*
07:00		17	3	6	8	23	11		*	*	*	*	*	*
07:15		10	5	10	6	20	11		*	*	*	*	*	*
07:30		11	2	4	3	15	5		*	*	*	*	*	*
07:45		11	0	8	4	19	4		*	*	*	*	*	*
08:00		12	3	6	3	18	6		*	*	*	*	*	*
08:15		12	3	4	2	16	5		*	*	*	*	*	*
08:30		12	0	4	4	16	4		*	*	*	*	*	*
08:45		5	7	8	4	13	11		*	*	*	*	*	*
09:00		5	5	4	2	9	7		*	*	*	*	*	*
09:15		2	0	3	3	5	3		*	*	*	*	*	*
09:30		11	1	9	3	20	4		*	*	*	*	*	*
09:45		5	2	9	1	14	3		*	*	*	*	*	*
10:00		7	1	6	1	13	2		*	*	*	*	*	*
10:15		0	1	5	2	5	3		*	*	*	*	*	*
10:30		3	3	3	1	6	4		*	*	*	*	*	*
10:45		6	1	3	0	9	1		*	*	*	*	*	*
11:00		5	1	4	2	9	3		*	*	*	*	*	*
11:15		9	0	10	0	19	0		*	*	*	*	*	*
11:30		7	1	6	0	13	1		*	*	*	*	*	*
11:45		5	0	6	0	11	0		*	*	*	*	*	*
Total		221	277	139	328	360	605		0	0	0	0	0	0
Day Total		498		467		965			0		0		0	
% Total		22.9%	28.7%	14.4%	34.0%				0.0%	0.0%	0.0%	0.0%		
Peak	-	06:45	02:30	09:30	02:45	06:30	02:30	-	-	-	-	-	-	-
Vol.	-	56	44	29	62	81	103	-	-	-	-	-	-	-
P.H.F.		0.778	0.846	0.725	0.861	0.880	0.858							
ADT	ADT 965	AADT 965												

Transportation Data Corporation

Mario Perone, mperone1@verizon.net
tel (781) 587-0086 cell (781) 439-4999

Page 1

#137 Bullard Street
north of Central Street
City, State: Holliston, MA
Client: McM/M. Pompili

05388Cclass
Site Code: Y-21015.11

Northbound

Start Time	Bikes	Cars & Trailers	2 Axle Long	Buses	2 Axle 6 Tire	3 Axle Single	4 Axle Single	<5 Axl Double	5 Axle Double	>6 Axl Double	<6 Axl Multi	6 Axle Multi	>6 Axl Multi	Total
02/25/21	0	1	0	0	0	0	0	0	0	0	0	0	0	1
01:00	0	1	0	0	0	0	0	0	0	0	0	0	0	1
02:00	0	0	0	0	0	0	0	0	0	0	0	0	0	0
03:00	0	0	0	0	0	0	0	0	0	0	0	0	0	0
04:00	0	3	0	0	1	0	0	0	0	0	0	0	0	4
05:00	0	13	2	0	1	0	0	0	0	0	0	0	0	16
06:00	0	31	7	1	3	1	0	1	0	0	0	0	0	44
07:00	0	30	10	3	5	1	0	0	0	0	0	0	0	49
08:00	1	25	8	1	4	1	0	1	0	0	0	0	0	41
09:00	0	14	6	1	2	0	0	0	0	0	0	0	0	23
10:00	0	8	5	1	1	1	0	0	0	0	0	0	0	16
11:00	0	17	2	1	4	1	1	0	0	0	0	0	0	26
12 PM	0	19	13	2	6	0	0	1	0	0	0	0	0	41
13:00	0	16	3	0	6	0	0	1	0	0	0	0	0	26
14:00	0	27	8	1	5	1	0	0	0	0	0	0	0	42
15:00	0	23	10	1	4	1	0	1	0	0	0	0	0	40
16:00	0	21	6	0	1	0	0	0	0	0	0	0	0	28
17:00	0	32	6	0	2	0	0	0	0	0	0	0	0	40
18:00	0	15	3	0	3	0	0	0	0	0	0	0	0	21
19:00	0	9	1	0	0	0	0	0	0	0	0	0	0	10
20:00	0	10	3	0	0	0	0	0	0	0	0	0	0	13
21:00	0	6	2	0	0	0	0	0	0	0	0	0	0	8
22:00	0	5	1	0	0	0	0	0	0	0	0	0	0	6
23:00	0	1	1	0	0	0	0	0	0	0	0	0	0	2
Day Total	1	327	97	12	48	7	1	5	0	0	0	0	0	498
Percent	0.2%	65.7%	19.5%	2.4%	9.6%	1.4%	0.2%	1.0%	0.0%	0.0%	0.0%	0.0%	0.0%	
AM Peak	08:00	06:00	07:00	07:00	07:00	06:00	11:00	06:00						07:00
Vol.	1	31	10	3	5	1	1	1						49
PM Peak		17:00	12:00	12:00	12:00	14:00		12:00						14:00
Vol.		32	13	2	6	1		1						42
Grand Total	1	327	97	12	48	7	1	5	0	0	0	0	0	498
Percent	0.2%	65.7%	19.5%	2.4%	9.6%	1.4%	0.2%	1.0%	0.0%	0.0%	0.0%	0.0%	0.0%	

Transportation Data Corporation

Mario Perone, mperone1@verizon.net
tel (781) 587-0086 cell (781) 439-4999

Page 2

#137 Bullard Street
north of Central Street
City, State: Holliston, MA
Client: McM/M. Pompili
Southbound

05388Cclass
Site Code: Y-21015.11

Start Time	Bikes	Cars & Trailers	2 Axle Long	Buses	2 Axle 6 Tire	3 Axle Single	4 Axle Single	<5 Axl Double	5 Axle Double	>6 Axl Double	<6 Axl Multi	6 Axle Multi	>6 Axl Multi	Total
02/25/21	0	3	1	0	0	0	0	0	0	0	0	0	0	4
01:00	0	0	0	0	0	0	0	0	0	0	0	0	0	0
02:00	0	0	0	0	0	0	0	0	0	0	0	0	0	0
03:00	0	0	0	0	0	0	0	0	0	0	0	0	0	0
04:00	0	1	0	0	1	0	0	0	0	0	0	0	0	2
05:00	0	2	0	0	0	0	0	0	0	0	0	0	0	2
06:00	0	9	2	1	1	0	0	0	0	0	0	0	0	13
07:00	0	16	9	0	0	2	0	1	0	0	0	0	0	28
08:00	0	10	5	0	5	2	0	0	0	0	0	0	0	22
09:00	0	18	5	1	1	0	0	0	0	0	0	0	0	25
10:00	0	10	3	2	2	0	0	0	0	0	0	0	0	17
11:00	0	15	7	1	2	1	0	0	0	0	0	0	0	26
12 PM	0	13	13	2	3	0	0	0	0	0	0	0	0	31
13:00	0	13	9	1	0	1	0	0	0	0	0	0	0	24
14:00	1	25	10	2	6	0	0	0	0	0	0	0	0	44
15:00	0	36	10	0	7	1	0	0	0	0	0	0	0	54
16:00	0	41	12	0	2	0	0	0	0	0	0	0	0	55
17:00	0	32	7	0	0	0	0	0	0	0	0	0	0	39
18:00	0	24	6	0	2	0	0	0	0	0	0	0	0	32
19:00	0	14	7	0	0	0	0	0	0	0	0	0	0	21
20:00	0	11	2	0	0	0	0	0	0	0	0	0	0	13
21:00	0	8	1	0	0	0	0	0	0	0	0	0	0	9
22:00	0	4	0	0	0	0	0	0	0	0	0	0	0	4
23:00	0	2	0	0	0	0	0	0	0	0	0	0	0	2
Day Total	1	307	109	10	32	7	0	1	0	0	0	0	0	467
Percent	0.2%	65.7%	23.3%	2.1%	6.9%	1.5%	0.0%	0.2%	0.0%	0.0%	0.0%	0.0%	0.0%	
AM Peak Vol.		09:00 18	07:00 9	10:00 2	08:00 5	07:00 2		07:00 1						07:00 28
PM Peak Vol.	14:00 1	16:00 41	12:00 13	12:00 2	15:00 7	13:00 1								16:00 55
Grand Total	1	307	109	10	32	7	0	1	0	0	0	0	0	467
Percent	0.2%	65.7%	23.3%	2.1%	6.9%	1.5%	0.0%	0.2%	0.0%	0.0%	0.0%	0.0%	0.0%	

Transportation Data Corporation

Mario Perone, mperone1@verizon.net
tel (781) 587-0086 cell (781) 439-4999

Page 1

#137 Bullard Street
north of Central Street
City, State: Holliston, MA
Client: McM/M. Pompili
Northbound

05388Cspeed
Site Code: Y-21015.11

Start Time	15	16	21	26	31	36	41	46	51	56	61	66	71	Total	85th Percent	95th Percent
02/25/21	0	1	0	0	0	0	0	0	0	0	0	0	0	1	19	19
01:00	0	1	0	0	0	0	0	0	0	0	0	0	0	1	19	19
02:00	0	0	0	0	0	0	0	0	0	0	0	0	0	0	*	*
03:00	0	0	0	0	0	0	0	0	0	0	0	0	0	0	*	*
04:00	0	0	0	0	1	2	1	0	0	0	0	0	0	4	42	44
05:00	0	0	0	1	6	5	4	0	0	0	0	0	0	16	42	43
06:00	0	0	0	0	12	19	10	1	2	0	0	0	0	44	43	49
07:00	0	0	1	8	11	17	10	1	1	0	0	0	0	49	42	44
08:00	0	0	1	8	12	17	3	0	0	0	0	0	0	41	39	41
09:00	0	1	0	0	10	10	1	1	0	0	0	0	0	23	39	44
10:00	0	0	0	1	8	5	2	0	0	0	0	0	0	16	39	42
11:00	0	2	0	3	7	12	2	0	0	0	0	0	0	26	39	41
12 PM	0	0	1	10	16	12	1	1	0	0	0	0	0	41	38	39
13:00	0	0	1	3	12	8	2	0	0	0	0	0	0	26	38	41
14:00	0	0	4	4	25	6	3	0	0	0	0	0	0	42	37	41
15:00	0	1	2	2	13	13	9	0	0	0	0	0	0	40	41	43
16:00	3	0	0	1	10	10	4	0	0	0	0	0	0	28	39	43
17:00	0	1	0	9	13	12	5	0	0	0	0	0	0	40	39	43
18:00	0	1	0	4	6	7	2	1	0	0	0	0	0	21	39	44
19:00	0	0	1	2	4	0	3	0	0	0	0	0	0	10	42	44
20:00	1	1	1	0	4	5	1	0	0	0	0	0	0	13	39	41
21:00	1	0	0	1	1	4	1	0	0	0	0	0	0	8	39	42
22:00	0	0	0	0	5	0	1	0	0	0	0	0	0	6	40	43
23:00	0	0	0	0	1	1	0	0	0	0	0	0	0	2	38	39
Total	5	9	12	57	177	165	65	5	3	0	0	0	0	498		
Percent	1.0%	1.8%	2.4%	11.4%	35.5%	33.1%	13.1%	1.0%	0.6%	0.0%	0.0%	0.0%	0.0%			
AM Peak		11:00	07:00	07:00	06:00	06:00	06:00	06:00	06:00					07:00		
Vol.		2	1	8	12	19	10	1	2					49		
PM Peak	16:00	15:00	14:00	12:00	14:00	15:00	15:00	12:00						14:00		
Vol.	3	1	4	10	25	13	9	1						42		
Grand Total	5	9	12	57	177	165	65	5	3	0	0	0	0	498		
Percent	1.0%	1.8%	2.4%	11.4%	35.5%	33.1%	13.1%	1.0%	0.6%	0.0%	0.0%	0.0%	0.0%			

15th Percentile : 29 MPH
50th Percentile : 34 MPH
85th Percentile : 39 MPH
95th Percentile : 43 MPH

Stats 10 MPH Pace Speed : 31-40 MPH

Number of Vehicles > 30 MPH : 415
Percent of Vehicles > 30 MPH : 83.3%
Mean Speed(Average) : 35 MPH

Transportation Data Corporation

Mario Perone, mperone1@verizon.net
tel (781) 587-0086 cell (781) 439-4999

Page 2

#137 Bullard Street
north of Central Street
City, State: Holliston, MA
Client: McM/M. Pompili
Southbound

05388Cspeed
Site Code: Y-21015.11

Start Time	15	16	21	26	31	36	41	46	51	56	61	66	71	Total	85th Percent	95th Percent
02/25/21	0	0	0	2	1	1	0	0	0	0	0	0	0	4	37	38
01:00	0	0	0	0	0	0	0	0	0	0	0	0	0	0	*	*
02:00	0	0	0	0	0	0	0	0	0	0	0	0	0	0	*	*
03:00	0	0	0	0	0	0	0	0	0	0	0	0	0	0	*	*
04:00	0	0	0	2	0	0	0	0	0	0	0	0	0	2	29	29
05:00	0	0	0	0	2	0	0	0	0	0	0	0	0	2	34	34
06:00	1	0	1	3	4	3	0	0	1	0	0	0	0	13	38	51
07:00	0	1	2	4	10	11	0	0	0	0	0	0	0	28	38	39
08:00	0	0	0	7	9	6	0	0	0	0	0	0	0	22	37	39
09:00	0	0	0	9	11	4	1	0	0	0	0	0	0	25	36	39
10:00	0	1	1	4	3	8	0	0	0	0	0	0	0	17	38	39
11:00	0	0	2	5	10	9	0	0	0	0	0	0	0	26	37	39
12 PM	0	0	2	6	13	8	1	1	0	0	0	0	0	31	38	42
13:00	1	1	0	4	13	5	0	0	0	0	0	0	0	24	36	38
14:00	1	0	0	7	17	12	7	0	0	0	0	0	0	44	40	43
15:00	1	3	0	7	21	15	7	0	0	0	0	0	0	54	39	43
16:00	1	1	0	0	22	26	4	1	0	0	0	0	0	55	39	42
17:00	1	1	0	6	12	13	5	1	0	0	0	0	0	39	40	44
18:00	2	3	2	4	16	4	1	0	0	0	0	0	0	32	35	39
19:00	0	0	0	6	6	9	0	0	0	0	0	0	0	21	38	39
20:00	0	1	0	0	7	4	1	0	0	0	0	0	0	13	38	41
21:00	0	0	0	1	3	5	0	0	0	0	0	0	0	9	38	39
22:00	0	0	0	1	0	2	1	0	0	0	0	0	0	4	42	44
23:00	0	0	0	0	2	0	0	0	0	0	0	0	0	2	34	34
Total	8	12	10	78	182	145	28	3	1	0	0	0	0	467		
Percent	1.7%	2.6%	2.1%	16.7%	39.0%	31.0%	6.0%	0.6%	0.2%	0.0%	0.0%	0.0%	0.0%			
AM Peak	06:00	07:00	07:00	09:00	09:00	07:00	09:00		06:00					07:00		
Vol.	1	1	2	9	11	11	1		1					28		
PM Peak	18:00	15:00	12:00	14:00	16:00	16:00	14:00	12:00						16:00		
Vol.	2	3	2	7	22	26	7	1						55		
Grand Total	8	12	10	78	182	145	28	3	1	0	0	0	0	467		
Percent	1.7%	2.6%	2.1%	16.7%	39.0%	31.0%	6.0%	0.6%	0.2%	0.0%	0.0%	0.0%	0.0%			

15th Percentile : 27 MPH
50th Percentile : 33 MPH
85th Percentile : 38 MPH
95th Percentile : 41 MPH

Stats 10 MPH Pace Speed : 31-40 MPH

Number of Vehicles > 30 MPH : 359
Percent of Vehicles > 30 MPH : 76.9%
Mean Speed(Average) : 33 MPH

Transportation Data Corporation

Mario Perone, mperone1@verizon.net
tel (781) 587-0086 cell (781) 439-4999

Page 1

Fiske Street
west of Lowland Street
City, State: Holliston, MA
Client: McM/M. Pompili
Eastbound

05388Dclass
Site Code: Y-21015.11

Start Time	Bikes	Cars & Trailers	2 Axle Long	Buses	2 Axle 6 Tire	3 Axle Single	4 Axle Single	<5 Axl Double	5 Axle Double	>6 Axl Double	<6 Axl Multi	6 Axle Multi	>6 Axl Multi	Total
02/25/21	0	2	0	0	0	0	0	0	0	0	0	0	0	2
01:00	0	0	0	0	0	0	0	0	0	0	0	0	0	0
02:00	0	0	0	0	0	0	0	0	0	0	0	0	0	0
03:00	0	0	0	0	0	0	0	0	0	0	0	0	0	0
04:00	0	4	2	0	0	0	0	0	0	0	0	0	0	6
05:00	0	14	6	0	1	0	0	0	0	0	0	0	0	21
06:00	0	55	20	0	2	0	0	0	0	0	0	0	0	77
07:00	0	116	22	0	4	2	0	1	0	0	0	0	0	145
08:00	0	72	24	0	5	1	0	0	0	0	0	0	0	102
09:00	0	26	15	2	5	0	0	0	0	0	0	0	0	48
10:00	1	20	8	0	2	0	0	1	0	0	0	0	0	32
11:00	1	30	11	1	5	0	0	0	0	0	0	0	0	48
12 PM	1	33	17	0	2	0	0	0	0	0	0	0	0	53
13:00	0	36	6	1	6	0	0	0	0	0	0	0	0	49
14:00	0	43	10	1	3	1	0	0	0	0	0	0	0	58
15:00	1	41	7	0	4	0	0	0	0	0	0	0	0	53
16:00	1	36	8	1	2	0	0	0	0	0	0	0	0	48
17:00	1	34	4	0	3	0	0	0	0	0	0	0	0	42
18:00	0	26	7	0	2	0	0	0	0	0	0	0	0	35
19:00	0	20	2	0	0	0	0	0	0	0	0	0	0	22
20:00	0	12	3	0	0	0	0	0	1	0	0	0	0	16
21:00	0	2	1	0	0	0	0	0	0	0	0	0	0	3
22:00	0	1	1	0	0	0	0	0	0	0	0	0	0	2
23:00	0	3	0	0	0	0	0	0	0	0	0	0	0	3
Day Total	6	626	174	6	46	4	0	2	1	0	0	0	0	865
Percent	0.7%	72.4%	20.1%	0.7%	5.3%	0.5%	0.0%	0.2%	0.1%	0.0%	0.0%	0.0%	0.0%	
AM Peak	10:00	07:00	08:00	09:00	08:00	07:00		07:00						07:00
Vol.	1	116	24	2	5	2		1						145
PM Peak	12:00	14:00	12:00	13:00	13:00	14:00			20:00					14:00
Vol.	1	43	17	1	6	1			1					58
Grand Total	6	626	174	6	46	4	0	2	1	0	0	0	0	865
Percent	0.7%	72.4%	20.1%	0.7%	5.3%	0.5%	0.0%	0.2%	0.1%	0.0%	0.0%	0.0%	0.0%	

Transportation Data Corporation

Mario Perone, mperone1@verizon.net
tel (781) 587-0086 cell (781) 439-4999

Page 2

Fiske Street
west of Lowland Street
City, State: Holliston, MA
Client: McM/M. Pompili
Westbound

05388Dclass
Site Code: Y-21015.11

Start Time	Bikes	Cars & Trailers	2 Axle Long	Buses	2 Axle 6 Tire	3 Axle Single	4 Axle Single	<5 Axl Double	5 Axle Double	>6 Axl Double	<6 Axl Multi	6 Axle Multi	>6 Axl Multi	Total
02/25/21	0	0	0	0	0	0	0	0	0	0	0	0	0	0
01:00	0	2	0	0	0	0	0	0	0	0	0	0	0	2
02:00	0	0	0	0	0	0	0	0	0	0	0	0	0	0
03:00	0	0	0	0	0	0	0	0	0	0	0	0	0	0
04:00	0	0	0	0	0	0	0	0	0	0	0	0	0	0
05:00	0	2	0	0	0	0	0	0	0	0	0	0	0	2
06:00	0	9	2	0	2	0	0	0	0	0	0	0	0	13
07:00	0	16	3	1	5	1	0	0	0	0	0	0	0	26
08:00	0	33	17	2	5	2	0	0	0	0	0	0	0	59
09:00	0	17	12	0	7	0	0	0	0	0	0	0	0	36
10:00	0	15	8	0	5	0	0	1	0	0	0	0	0	29
11:00	2	19	7	0	9	0	0	1	0	0	0	0	0	38
12 PM	0	41	11	1	7	0	0	1	0	0	0	0	0	61
13:00	1	40	15	0	9	0	0	0	0	0	0	0	0	65
14:00	1	36	13	0	6	0	0	0	1	0	0	0	0	57
15:00	2	101	27	0	22	1	0	1	0	0	0	0	0	154
16:00	0	87	25	0	12	1	0	0	0	0	0	0	0	125
17:00	0	76	21	0	10	0	0	0	0	0	0	0	0	107
18:00	0	37	6	0	6	0	0	0	0	0	0	0	0	49
19:00	0	19	5	0	1	0	0	0	0	0	0	0	0	25
20:00	0	15	2	0	1	0	0	0	0	0	0	0	0	18
21:00	0	8	1	0	1	0	0	0	0	0	0	0	0	10
22:00	0	6	1	0	1	0	0	0	0	0	0	0	0	8
23:00	0	2	1	0	0	0	0	0	0	0	0	0	0	3
Day Total	6	581	177	4	109	5	0	4	1	0	0	0	0	887
Percent	0.7%	65.5%	20.0%	0.5%	12.3%	0.6%	0.0%	0.5%	0.1%	0.0%	0.0%	0.0%	0.0%	
AM Peak	11:00	08:00	08:00	08:00	11:00	08:00		10:00						08:00
Vol.	2	33	17	2	9	2		1						59
PM Peak	15:00	15:00	15:00	12:00	15:00	15:00		12:00	14:00					15:00
Vol.	2	101	27	1	22	1		1	1					154
Grand Total	6	581	177	4	109	5	0	4	1	0	0	0	0	887
Percent	0.7%	65.5%	20.0%	0.5%	12.3%	0.6%	0.0%	0.5%	0.1%	0.0%	0.0%	0.0%	0.0%	

Transportation Data Corporation

Mario Perone, mperone1@verizon.net
tel (781) 587-0086 cell (781) 439-4999

Page 1

Fiske Street
west of Lowland Street
City, State: Holliston, MA
Client: McM/M. Pompili

05388Dspeed
Site Code: Y-21015.11

Start Time	15	16	21	26	31	36	41	46	51	56	61	66	71	Total	85th Percent	95th Percent
02/25/21	0	0	0	2	0	0	0	0	0	0	0	0	0	2	29	29
01:00	0	0	0	0	0	0	0	0	0	0	0	0	0	0	*	*
02:00	0	0	0	0	0	0	0	0	0	0	0	0	0	0	*	*
03:00	0	0	0	0	0	0	0	0	0	0	0	0	0	0	*	*
04:00	0	0	0	0	3	2	1	0	0	0	0	0	0	6	40	43
05:00	0	0	0	2	10	8	0	1	0	0	0	0	0	21	38	39
06:00	0	0	0	4	27	36	10	0	0	0	0	0	0	77	39	43
07:00	0	1	5	6	49	63	20	1	0	0	0	0	0	145	39	43
08:00	3	0	3	2	28	41	23	2	0	0	0	0	0	102	42	44
09:00	0	0	1	3	13	24	6	1	0	0	0	0	0	48	39	43
10:00	0	0	0	2	12	13	5	0	0	0	0	0	0	32	40	43
11:00	0	0	3	3	14	19	9	0	0	0	0	0	0	48	40	43
12 PM	1	0	0	6	13	21	6	6	0	0	0	0	0	53	43	47
13:00	1	0	0	3	23	17	5	0	0	0	0	0	0	49	39	42
14:00	0	0	1	2	20	28	6	1	0	0	0	0	0	58	39	43
15:00	0	0	0	3	27	18	4	1	0	0	0	0	0	53	39	42
16:00	1	0	0	2	11	20	13	1	0	0	0	0	0	48	42	44
17:00	3	0	0	1	14	17	6	1	0	0	0	0	0	42	40	44
18:00	0	0	0	4	13	15	3	0	0	0	0	0	0	35	39	42
19:00	0	0	0	3	7	6	5	1	0	0	0	0	0	22	42	44
20:00	0	0	0	4	4	5	2	0	1	0	0	0	0	16	41	50
21:00	0	0	0	0	2	1	0	0	0	0	0	0	0	3	37	39
22:00	0	0	0	0	1	1	0	0	0	0	0	0	0	2	38	39
23:00	0	0	0	1	1	0	1	0	0	0	0	0	0	3	42	44
Total	9	1	13	53	292	355	125	16	1	0	0	0	0	865		
Percent	1.0%	0.1%	1.5%	6.1%	33.8%	41.0%	14.5%	1.8%	0.1%	0.0%	0.0%	0.0%	0.0%			
AM Peak	08:00	07:00	07:00	07:00	07:00	07:00	08:00	08:00						07:00		
Vol.	3	1	5	6	49	63	23	2						145		
PM Peak	17:00		14:00	12:00	15:00	14:00	16:00	12:00	20:00					14:00		
Vol.	3		1	6	27	28	13	6	1					58		
Grand Total	9	1	13	53	292	355	125	16	1	0	0	0	0	865		
Percent	1.0%	0.1%	1.5%	6.1%	33.8%	41.0%	14.5%	1.8%	0.1%	0.0%	0.0%	0.0%	0.0%			

15th Percentile : 30 MPH
50th Percentile : 35 MPH
85th Percentile : 40 MPH
95th Percentile : 43 MPH

Stats 10 MPH Pace Speed : 31-40 MPH

Number of Vehicles > 30 MPH : 789
Percent of Vehicles > 30 MPH : 91.2%
Mean Speed(Average) : 36 MPH

Transportation Data Corporation

Mario Perone, mperone1@verizon.net
tel (781) 587-0086 cell (781) 439-4999

Fiske Street
west of Lowland Street
City, State: Holliston, MA
Client: McM/M. Pompili
Westbound

05388Dspeed
Site Code: Y-21015.11

Start Time	15	16	21	26	31	36	41	46	51	56	61	66	71	Total	85th Percent	95th Percent
02/25/21	0	0	0	0	0	0	0	0	0	0	0	0	0	0	*	*
01:00	0	0	0	1	0	0	0	0	0	0	1	0	0	2	63	64
02:00	0	0	0	0	0	0	0	0	0	0	0	0	0	0	*	*
03:00	0	0	0	0	0	0	0	0	0	0	0	0	0	0	*	*
04:00	0	0	0	0	0	0	0	0	0	0	0	0	0	0	*	*
05:00	0	0	0	0	1	0	0	1	0	0	0	0	0	2	48	49
06:00	0	1	0	1	3	4	2	2	0	0	0	0	0	13	45	48
07:00	0	1	0	3	8	9	4	1	0	0	0	0	0	26	41	44
08:00	1	2	0	6	21	17	10	2	0	0	0	0	0	59	41	44
09:00	0	0	0	6	10	12	3	3	2	0	0	0	0	36	44	50
10:00	0	0	0	6	9	4	8	2	0	0	0	0	0	29	43	46
11:00	0	0	4	1	16	10	5	2	0	0	0	0	0	38	41	45
12 PM	0	0	1	4	19	18	17	1	0	1	0	0	0	61	42	44
13:00	0	0	1	10	24	17	9	3	1	0	0	0	0	65	41	46
14:00	1	0	0	6	24	11	14	1	0	0	0	0	0	57	42	44
15:00	1	0	2	26	64	38	17	5	1	0	0	0	0	154	39	44
16:00	0	0	0	13	45	43	17	6	1	0	0	0	0	125	41	45
17:00	0	0	0	9	33	40	21	4	0	0	0	0	0	107	42	44
18:00	0	0	0	6	17	12	10	4	0	0	0	0	0	49	43	46
19:00	0	0	2	3	10	5	3	2	0	0	0	0	0	25	42	46
20:00	1	0	2	3	7	3	2	0	0	0	0	0	0	18	38	42
21:00	0	0	0	1	6	2	1	0	0	0	0	0	0	10	38	42
22:00	0	0	0	2	3	3	0	0	0	0	0	0	0	8	38	39
23:00	0	0	0	0	1	1	1	0	0	0	0	0	0	3	42	44
Total	4	4	12	107	321	249	144	39	5	1	1	0	0	887		
Percent	0.5%	0.5%	1.4%	12.1%	36.2%	28.1%	16.2%	4.4%	0.6%	0.1%	0.1%	0.0%	0.0%			
AM Peak	08:00	08:00	11:00	08:00	08:00	08:00	08:00	09:00	09:00		01:00			08:00		
Vol.	1	2	4	6	21	17	10	3	2		1			59		
PM Peak	14:00		15:00	15:00	15:00	16:00	17:00	16:00	13:00	12:00				15:00		
Vol.	1		2	26	64	43	21	6	1	1				154		
Grand Total	4	4	12	107	321	249	144	39	5	1	1	0	0	887		
Percent	0.5%	0.5%	1.4%	12.1%	36.2%	28.1%	16.2%	4.4%	0.6%	0.1%	0.1%	0.0%	0.0%			

15th Percentile : 30 MPH
50th Percentile : 34 MPH
85th Percentile : 41 MPH
95th Percentile : 45 MPH

Stats 10 MPH Pace Speed : 31-40 MPH

Number of Vehicles > 30 MPH : 760
Percent of Vehicles > 30 MPH : 85.7%
Mean Speed(Average) : 36 MPH

Transportation Data Corporation

Mario Perone, mperone1@verizon.net
tel (781) 587-0086 cell (781) 439-4999

Page 1

Lowland Street
north of Fiske Street
City, State: Holliston, MA
Client: McM/M. Pompili

05388Eclass
Site Code: Y-21015.11

Northbound

Start Time	Bikes	Cars & Trailers	2 Axle Long	Buses	2 Axle 6 Tire	3 Axle Single	4 Axle Single	<5 Axl Double	5 Axle Double	>6 Axl Double	<6 Axl Multi	6 Axle Multi	>6 Axl Multi	Total
02/25/21	0	1	0	0	0	0	0	0	0	0	0	0	0	1
01:00	0	0	0	0	0	0	0	0	0	0	0	0	0	0
02:00	0	0	0	0	0	0	0	0	0	0	0	0	0	0
03:00	0	0	0	0	0	0	0	0	0	0	0	0	0	0
04:00	0	7	3	0	1	0	0	0	0	0	0	0	0	11
05:00	0	26	7	0	2	0	0	0	0	0	0	0	0	35
06:00	0	62	22	0	8	1	0	1	0	0	0	0	0	94
07:00	1	85	28	2	11	3	0	0	0	0	0	0	0	130
08:00	0	73	14	0	13	2	1	1	0	0	0	0	0	104
09:00	0	25	17	1	4	1	0	0	0	0	0	0	0	48
10:00	0	20	11	0	7	1	0	0	0	0	0	0	0	39
11:00	1	29	7	1	11	0	1	1	0	0	0	0	0	51
12 PM	0	36	22	3	10	0	0	0	0	0	0	0	0	71
13:00	0	34	5	1	10	0	0	1	0	0	0	0	0	51
14:00	1	55	16	1	9	0	0	1	0	0	0	0	0	83
15:00	0	53	9	1	10	0	0	1	0	0	0	0	0	74
16:00	0	38	9	0	6	0	0	0	0	0	0	0	0	53
17:00	0	34	9	0	2	1	0	1	0	0	0	0	0	47
18:00	0	31	7	0	3	0	0	0	0	0	0	0	0	41
19:00	0	15	1	0	2	0	0	0	0	0	0	0	0	18
20:00	0	12	2	0	0	0	0	0	0	0	0	0	0	14
21:00	0	9	0	0	0	0	0	0	0	0	0	0	0	9
22:00	0	3	1	0	1	0	0	0	0	0	0	0	0	5
23:00	0	1	2	0	0	0	0	0	0	0	0	0	0	3
Day Total	3	649	192	10	110	9	2	7	0	0	0	0	0	982
Percent	0.3%	66.1%	19.6%	1.0%	11.2%	0.9%	0.2%	0.7%	0.0%	0.0%	0.0%	0.0%	0.0%	
AM Peak	07:00	07:00	07:00	07:00	08:00	07:00	08:00	06:00						07:00
Vol.	1	85	28	2	13	3	1	1						130
PM Peak	14:00	14:00	12:00	12:00	12:00	17:00		13:00						14:00
Vol.	1	55	22	3	10	1		1						83
Grand Total	3	649	192	10	110	9	2	7	0	0	0	0	0	982
Percent	0.3%	66.1%	19.6%	1.0%	11.2%	0.9%	0.2%	0.7%	0.0%	0.0%	0.0%	0.0%	0.0%	

Transportation Data Corporation

Mario Perone, mperone1@verizon.net
tel (781) 587-0086 cell (781) 439-4999

Page 2

Lowland Street
north of Fiske Street
City, State: Holliston, MA
Client: McM/M. Pompili
Southbound

05388Eclass
Site Code: Y-21015.11

Start Time	Bikes	Cars & Trailers	2 Axle Long	Buses	2 Axle 6 Tire	3 Axle Single	4 Axle Single	<5 Axl Double	5 Axle Double	>6 Axl Double	<6 Axl Multi	6 Axle Multi	>6 Axl Multi	Total
02/25/21	0	4	1	0	0	0	0	0	0	0	0	0	0	5
01:00	0	0	0	0	0	0	0	0	0	0	0	0	0	0
02:00	0	1	0	0	0	0	0	0	0	0	0	0	0	1
03:00	0	0	0	0	0	0	0	0	0	0	0	0	0	0
04:00	0	1	0	0	1	0	0	0	0	0	0	0	0	2
05:00	0	2	0	0	0	0	0	0	0	0	0	0	0	2
06:00	0	12	2	1	1	0	0	0	0	0	0	0	0	16
07:00	0	29	15	0	2	3	0	1	0	0	0	0	0	50
08:00	0	33	16	1	8	4	0	0	0	0	0	0	0	62
09:00	1	23	12	1	4	0	0	0	0	0	0	0	0	41
10:00	0	19	11	2	4	1	0	0	0	0	0	0	0	37
11:00	0	23	13	1	6	0	0	1	0	0	0	0	0	44
12 PM	0	33	17	2	4	0	0	0	0	0	0	0	0	56
13:00	0	46	16	1	3	1	0	1	0	0	0	0	0	68
14:00	1	44	19	1	8	0	0	0	1	0	0	0	0	74
15:00	2	114	33	0	16	0	0	1	0	0	0	0	0	166
16:00	0	100	23	0	6	0	0	0	0	0	0	0	0	129
17:00	0	70	14	0	2	0	0	0	0	0	0	0	0	86
18:00	0	46	13	0	3	0	0	0	0	0	0	0	0	62
19:00	0	30	3	0	1	0	0	0	0	0	0	0	0	34
20:00	0	23	4	0	0	0	0	0	0	0	0	0	0	27
21:00	0	15	2	0	0	0	0	0	0	0	0	0	0	17
22:00	0	9	1	0	0	0	0	0	0	0	0	0	0	10
23:00	0	6	0	0	0	0	0	0	0	0	0	0	0	6
Day Total	4	683	215	10	69	9	0	4	1	0	0	0	0	995
Percent	0.4%	68.6%	21.6%	1.0%	6.9%	0.9%	0.0%	0.4%	0.1%	0.0%	0.0%	0.0%	0.0%	
AM Peak	09:00	08:00	08:00	10:00	08:00	08:00		07:00						08:00
Vol.	1	33	16	2	8	4		1						62
PM Peak	15:00	15:00	15:00	12:00	15:00	13:00		13:00	14:00					15:00
Vol.	2	114	33	2	16	1		1	1					166
Grand Total	4	683	215	10	69	9	0	4	1	0	0	0	0	995
Percent	0.4%	68.6%	21.6%	1.0%	6.9%	0.9%	0.0%	0.4%	0.1%	0.0%	0.0%	0.0%	0.0%	

Transportation Data Corporation

Mario Perone, mperone1@verizon.net
tel (781) 587-0086 cell (781) 439-4999

Page 1

Lowland Street
north of Fiske Street
City, State: Holliston, MA
Client: McM/M. Pompili

05388Espeed
Site Code: Y-21015.11

Northbound

Start Time	15	16	21	26	31	36	41	46	51	56	61	66	71	Total	85th Percent	95th Percent
02/25/21	0	0	0	1	0	0	0	0	0	0	0	0	0	1	29	29
01:00	0	0	0	0	0	0	0	0	0	0	0	0	0	0	*	*
02:00	0	0	0	0	0	0	0	0	0	0	0	0	0	0	*	*
03:00	0	0	0	0	0	0	0	0	0	0	0	0	0	0	*	*
04:00	0	0	0	0	5	4	1	1	0	0	0	0	0	11	41	47
05:00	0	0	0	1	15	14	4	1	0	0	0	0	0	35	39	44
06:00	0	0	0	5	38	38	10	2	0	0	1	0	0	94	39	44
07:00	2	0	1	19	42	51	13	2	0	0	0	0	0	130	39	43
08:00	3	2	5	16	54	18	5	1	0	0	0	0	0	104	37	40
09:00	0	1	4	15	17	7	4	0	0	0	0	0	0	48	37	41
10:00	0	0	1	10	16	9	3	0	0	0	0	0	0	39	38	41
11:00	0	1	3	11	11	19	4	2	0	0	0	0	0	51	39	44
12 PM	0	0	5	13	19	26	6	2	0	0	0	0	0	71	39	43
13:00	0	0	5	7	24	13	2	0	0	0	0	0	0	51	37	39
14:00	2	0	2	18	38	18	5	0	0	0	0	0	0	83	37	40
15:00	0	1	4	15	24	23	5	1	1	0	0	0	0	74	39	43
16:00	0	0	3	8	19	20	3	0	0	0	0	0	0	53	38	40
17:00	0	1	0	7	21	16	2	0	0	0	0	0	0	47	38	39
18:00	0	1	0	8	22	8	1	1	0	0	0	0	0	41	37	39
19:00	0	0	1	3	7	5	1	1	0	0	0	0	0	18	39	45
20:00	0	0	0	5	7	1	0	0	1	0	0	0	0	14	34	51
21:00	0	0	0	3	3	1	2	0	0	0	0	0	0	9	41	43
22:00	0	0	0	0	3	0	2	0	0	0	0	0	0	5	43	44
23:00	0	0	0	1	1	1	0	0	0	0	0	0	0	3	37	39
Total	7	7	34	166	386	292	73	14	2	0	1	0	0	982		
Percent	0.7%	0.7%	3.5%	16.9%	39.3%	29.7%	7.4%	1.4%	0.2%	0.0%	0.1%	0.0%	0.0%			
AM Peak	08:00	08:00	08:00	07:00	08:00	07:00	07:00	06:00			06:00			07:00		
Vol.	3	2	5	19	54	51	13	2			1			130		
PM Peak	14:00	15:00	12:00	14:00	14:00	12:00	12:00	12:00	15:00					14:00		
Vol.	2	1	5	18	38	26	6	2	1					83		
Grand Total	7	7	34	166	386	292	73	14	2	0	1	0	0	982		
Percent	0.7%	0.7%	3.5%	16.9%	39.3%	29.7%	7.4%	1.4%	0.2%	0.0%	0.1%	0.0%	0.0%			

15th Percentile : 27 MPH
50th Percentile : 33 MPH
85th Percentile : 39 MPH
95th Percentile : 42 MPH

Stats 10 MPH Pace Speed : 31-40 MPH

Number of Vehicles > 30 MPH : 768
Percent of Vehicles > 30 MPH : 78.2%
Mean Speed(Average) : 34 MPH

Transportation Data Corporation

Mario Perone, mperone1@verizon.net
tel (781) 587-0086 cell (781) 439-4999

Page 2

Lowland Street
north of Fiske Street
City, State: Holliston, MA
Client: McM/M. Pompili
Southbound

05388Espeed
Site Code: Y-21015.11

Start Time	15	16	21	26	31	36	41	46	51	56	61	66	71	Total	85th Percent	95th Percent
02/25/21	0	0	0	1	3	0	1	0	0	0	0	0	0	5	41	43
01:00	0	0	0	0	0	0	0	0	0	0	0	0	0	0	*	*
02:00	0	1	0	0	0	0	0	0	0	0	0	0	0	1	19	19
03:00	0	0	0	0	0	0	0	0	0	0	0	0	0	0	*	*
04:00	0	0	1	1	0	0	0	0	0	0	0	0	0	2	28	29
05:00	0	0	0	1	0	1	0	0	0	0	0	0	0	2	38	39
06:00	1	0	0	2	2	4	6	0	1	0	0	0	0	16	43	50
07:00	1	0	5	2	10	27	3	2	0	0	0	0	0	50	39	44
08:00	1	0	2	10	19	19	11	0	0	0	0	0	0	62	40	43
09:00	0	2	2	5	11	18	2	1	0	0	0	0	0	41	39	42
10:00	1	1	3	9	9	11	2	0	1	0	0	0	0	37	38	42
11:00	0	0	4	2	17	14	7	0	0	0	0	0	0	44	40	43
12 PM	0	0	2	1	24	23	6	0	0	0	0	0	0	56	39	42
13:00	0	0	5	4	18	27	14	0	0	0	0	0	0	68	41	43
14:00	1	0	6	5	18	22	21	1	0	0	0	0	0	74	42	44
15:00	1	0	9	15	51	67	16	3	1	1	1	1	0	166	39	44
16:00	1	0	0	1	27	67	28	5	0	0	0	0	0	129	42	44
17:00	1	1	1	5	16	43	16	2	1	0	0	0	0	86	41	44
18:00	0	0	3	9	30	17	2	0	1	0	0	0	0	62	38	39
19:00	0	0	1	1	20	10	2	0	0	0	0	0	0	34	38	40
20:00	0	0	0	5	9	9	3	0	1	0	0	0	0	27	39	44
21:00	0	0	0	2	2	8	4	1	0	0	0	0	0	17	43	45
22:00	0	0	0	0	2	5	2	1	0	0	0	0	0	10	43	47
23:00	0	0	0	0	2	2	1	0	1	0	0	0	0	6	50	53
Total	8	5	44	81	290	394	147	16	7	1	1	1	0	995		
Percent	0.8%	0.5%	4.4%	8.1%	29.1%	39.6%	14.8%	1.6%	0.7%	0.1%	0.1%	0.1%	0.0%			
AM Peak	06:00	09:00	07:00	08:00	08:00	07:00	08:00	07:00	06:00					08:00		
Vol.	1	2	5	10	19	27	11	2	1					62		
PM Peak	14:00	17:00	15:00	15:00	15:00	15:00	16:00	16:00	15:00	15:00	15:00	15:00		15:00		
Vol.	1	1	9	15	51	67	28	5	1	1	1	1		166		
Grand Total	8	5	44	81	290	394	147	16	7	1	1	1	0	995		
Percent	0.8%	0.5%	4.4%	8.1%	29.1%	39.6%	14.8%	1.6%	0.7%	0.1%	0.1%	0.1%	0.0%			

15th Percentile : 30 MPH
50th Percentile : 35 MPH
85th Percentile : 40 MPH
95th Percentile : 44 MPH

Stats 10 MPH Pace Speed : 31-40 MPH

Number of Vehicles > 30 MPH : 857
Percent of Vehicles > 30 MPH : 86.1%
Mean Speed(Average) : 36 MPH

Mario Perone, mperone1@verizon.net
tel (781) 587-0086 cell (781) 439-4999

05388Fvolume
Site Code: Y-21015.11

Start Time	25-Feb-21 Thu	NB		SB		Combined		26-Feb Fri	NB		SB		Combined	
		A.M.	P.M.	A.M.	P.M.	A.M.	P.M.		A.M.	P.M.	A.M.	P.M.	A.M.	P.M.
12:00		0	19	1	9	1	28		*	*	*	*	*	*
12:15		0	17	1	15	1	32		*	*	*	*	*	*
12:30		1	27	0	26	1	53		*	*	*	*	*	*
12:45		0	25	1	30	1	55		*	*	*	*	*	*
01:00		0	24	0	16	0	40		*	*	*	*	*	*
01:15		0	24	1	25	1	49		*	*	*	*	*	*
01:30		1	18	0	17	1	35		*	*	*	*	*	*
01:45		0	17	0	19	0	36		*	*	*	*	*	*
02:00		0	30	1	23	1	53		*	*	*	*	*	*
02:15		0	23	0	20	0	43		*	*	*	*	*	*
02:30		0	49	0	25	0	74		*	*	*	*	*	*
02:45		0	23	0	35	0	58		*	*	*	*	*	*
03:00		0	42	0	31	0	73		*	*	*	*	*	*
03:15		1	34	0	35	1	69		*	*	*	*	*	*
03:30		0	30	0	16	0	46		*	*	*	*	*	*
03:45		1	30	0	25	1	55		*	*	*	*	*	*
04:00		0	26	1	26	1	52		*	*	*	*	*	*
04:15		1	22	1	27	2	49		*	*	*	*	*	*
04:30		2	27	1	29	3	56		*	*	*	*	*	*
04:45		0	18	2	30	2	48		*	*	*	*	*	*
05:00		0	21	4	29	4	50		*	*	*	*	*	*
05:15		1	22	6	25	7	47		*	*	*	*	*	*
05:30		8	18	4	19	12	37		*	*	*	*	*	*
05:45		2	19	6	22	8	41		*	*	*	*	*	*
06:00		6	12	2	12	8	24		*	*	*	*	*	*
06:15		11	13	10	12	21	25		*	*	*	*	*	*
06:30		11	17	15	13	26	30		*	*	*	*	*	*
06:45		19	17	21	12	40	29		*	*	*	*	*	*
07:00		22	8	19	8	41	16		*	*	*	*	*	*
07:15		25	8	42	11	67	19		*	*	*	*	*	*
07:30		27	9	17	9	44	18		*	*	*	*	*	*
07:45		25	9	38	12	63	21		*	*	*	*	*	*
08:00		31	2	21	7	52	9		*	*	*	*	*	*
08:15		17	7	16	4	33	11		*	*	*	*	*	*
08:30		32	2	44	5	76	7		*	*	*	*	*	*
08:45		23	3	12	7	35	10		*	*	*	*	*	*
09:00		22	6	16	6	38	12		*	*	*	*	*	*
09:15		19	3	14	2	33	5		*	*	*	*	*	*
09:30		18	0	13	2	31	2		*	*	*	*	*	*
09:45		16	3	13	2	29	5		*	*	*	*	*	*
10:00		17	1	18	3	35	4		*	*	*	*	*	*
10:15		12	4	11	5	23	9		*	*	*	*	*	*
10:30		9	4	11	3	20	7		*	*	*	*	*	*
10:45		17	2	15	1	32	3		*	*	*	*	*	*
11:00		12	1	14	0	26	1		*	*	*	*	*	*
11:15		12	1	17	0	29	1		*	*	*	*	*	*
11:30		19	0	13	3	32	3		*	*	*	*	*	*
11:45		19	0	17	1	36	1		*	*	*	*	*	*
Total		459	737	459	714	918	1451		0	0	0	0	0	0
Day Total		1196		1173		2369			0		0		0	
% Total		19.4%	31.1%	19.4%	30.1%				0.0%	0.0%	0.0%	0.0%		
Peak	-	07:15	02:30	07:45	02:30	07:15	02:30	-	-	-	-	-	-	-
Vol.	-	108	148	119	126	226	274	-	-	-	-	-	-	-
P.H.F.		0.871	0.755	0.676	0.900	0.843	0.926							
ADT	ADT 2,369	AADT 2,369												

Transportation Data Corporation

Mario Perone, mperone1@verizon.net
tel (781) 587-0086 cell (781) 439-4999

Page 1

High Street
north of Washington Street
City, State: Holliston, MA
Client: McM/M. Pompili

05388Fclass
Site Code: Y-21015.11

Northbound

Start Time	Bikes	Cars & Trailers	2 Axle Long	Buses	2 Axle 6 Tire	3 Axle Single	4 Axle Single	<5 Axl Double	5 Axle Double	>6 Axl Double	<6 Axl Multi	6 Axle Multi	>6 Axl Multi	Total
02/25/21	0	1	0	0	0	0	0	0	0	0	0	0	0	1
01:00	0	1	0	0	0	0	0	0	0	0	0	0	0	1
02:00	0	0	0	0	0	0	0	0	0	0	0	0	0	0
03:00	0	2	0	0	0	0	0	0	0	0	0	0	0	2
04:00	0	1	1	0	1	0	0	0	0	0	0	0	0	3
05:00	0	9	2	0	0	0	0	0	0	0	0	0	0	11
06:00	0	36	8	0	3	0	0	0	0	0	0	0	0	47
07:00	1	58	25	6	9	0	0	0	0	0	0	0	0	99
08:00	3	74	20	2	3	1	0	0	0	0	0	0	0	103
09:00	0	43	22	1	9	0	0	0	0	0	0	0	0	75
10:00	0	43	10	0	2	0	0	0	0	0	0	0	0	55
11:00	1	38	16	2	5	0	0	0	0	0	0	0	0	62
12 PM	1	59	23	0	5	0	0	0	0	0	0	0	0	88
13:00	0	63	11	1	6	1	0	1	0	0	0	0	0	83
14:00	0	92	22	1	10	0	0	0	0	0	0	0	0	125
15:00	0	91	33	3	9	0	0	0	0	0	0	0	0	136
16:00	1	65	22	0	5	0	0	0	0	0	0	0	0	93
17:00	0	59	17	0	4	0	0	0	0	0	0	0	0	80
18:00	0	44	12	0	3	0	0	0	0	0	0	0	0	59
19:00	0	21	10	0	3	0	0	0	0	0	0	0	0	34
20:00	0	12	2	0	0	0	0	0	0	0	0	0	0	14
21:00	0	12	0	0	0	0	0	0	0	0	0	0	0	12
22:00	0	9	0	0	2	0	0	0	0	0	0	0	0	11
23:00	0	1	1	0	0	0	0	0	0	0	0	0	0	2
Day Total	7	834	257	16	79	2	0	1	0	0	0	0	0	1196
Percent	0.6%	69.7%	21.5%	1.3%	6.6%	0.2%	0.0%	0.1%	0.0%	0.0%	0.0%	0.0%	0.0%	
AM Peak	08:00	08:00	07:00	07:00	07:00	08:00								08:00
Vol.	3	74	25	6	9	1								103
PM Peak	12:00	14:00	15:00	15:00	14:00	13:00		13:00						15:00
Vol.	1	92	33	3	10	1		1						136
Grand Total	7	834	257	16	79	2	0	1	0	0	0	0	0	1196
Percent	0.6%	69.7%	21.5%	1.3%	6.6%	0.2%	0.0%	0.1%	0.0%	0.0%	0.0%	0.0%	0.0%	

Transportation Data Corporation

Mario Perone, mperone1@verizon.net
tel (781) 587-0086 cell (781) 439-4999

Page 1

High Street
north of Washington Street
City, State: Holliston, MA
Client: McM/M. Pompili

05388Fspeed
Site Code: Y-21015.11

Northbound

Start Time	1	16	21	26	31	36	41	46	51	56	61	66	71	Total	85th Percent	95th Percent
02/25/21	0	0	0	1	0	0	0	0	0	0	0	0	0	1	29	29
01:00	0	0	0	1	0	0	0	0	0	0	0	0	0	1	29	29
02:00	0	0	0	0	0	0	0	0	0	0	0	0	0	0	*	*
03:00	0	1	0	0	1	0	0	0	0	0	0	0	0	2	33	34
04:00	0	0	0	0	2	1	0	0	0	0	0	0	0	3	37	39
05:00	0	2	2	3	3	1	0	0	0	0	0	0	0	11	33	37
06:00	0	0	1	16	25	4	1	0	0	0	0	0	0	47	34	38
07:00	5	0	2	36	39	15	1	1	0	0	0	0	0	99	35	39
08:00	4	0	9	38	41	11	0	0	0	0	0	0	0	103	34	37
09:00	1	0	2	29	36	6	1	0	0	0	0	0	0	75	34	37
10:00	1	0	2	17	26	7	2	0	0	0	0	0	0	55	35	39
11:00	1	0	5	20	29	6	0	1	0	0	0	0	0	62	34	38
12 PM	2	0	0	32	42	11	1	0	0	0	0	0	0	88	34	38
13:00	0	0	1	29	40	12	1	0	0	0	0	0	0	83	35	38
14:00	1	0	10	49	52	11	1	1	0	0	0	0	0	125	34	38
15:00	1	0	11	44	66	13	1	0	0	0	0	0	0	136	34	37
16:00	2	0	2	28	50	8	3	0	0	0	0	0	0	93	34	38
17:00	0	0	6	30	36	8	0	0	0	0	0	0	0	80	34	37
18:00	0	0	7	23	22	7	0	0	0	0	0	0	0	59	34	37
19:00	0	0	2	14	14	4	0	0	0	0	0	0	0	34	34	37
20:00	0	0	2	5	6	1	0	0	0	0	0	0	0	14	34	36
21:00	0	0	0	4	5	3	0	0	0	0	0	0	0	12	37	39
22:00	0	0	0	6	2	2	1	0	0	0	0	0	0	11	38	42
23:00	0	0	0	0	1	1	0	0	0	0	0	0	0	2	38	39
Total	18	3	64	425	538	132	13	3	0	0	0	0	0	1196		
Percent	1.5%	0.3%	5.4%	35.5%	45.0%	11.0%	1.1%	0.3%	0.0%	0.0%	0.0%	0.0%	0.0%			
AM Peak	07:00	05:00	08:00	08:00	08:00	07:00	10:00	07:00						08:00		
Vol.	5	2	9	38	41	15	2	1						103		
PM Peak	12:00		15:00	14:00	15:00	15:00	16:00	14:00						15:00		
Vol.	2		11	49	66	13	3	1						136		
Grand Total	18	3	64	425	538	132	13	3	0	0	0	0	0	1196		
Percent	1.5%	0.3%	5.4%	35.5%	45.0%	11.0%	1.1%	0.3%	0.0%	0.0%	0.0%	0.0%	0.0%			

15th Percentile : 26 MPH
50th Percentile : 30 MPH
85th Percentile : 34 MPH
95th Percentile : 38 MPH

Stats 10 MPH Pace Speed : 26-35 MPH

Number of Vehicles > 30 MPH : 686
Percent of Vehicles > 30 MPH : 57.4%
Mean Speed(Average) : 31 MPH

Transportation Data Corporation

Mario Perone, mperone1@verizon.net
tel (781) 587-0086 cell (781) 439-4999

High Street
north of Washington Street
City, State: Holliston, MA
Client: McM/M. Pompili
Southbound

05388Fspeed
Site Code: Y-21015.11

Start Time	15	16	21	26	31	36	41	46	51	56	61	66	71	Total	85th Percent	95th Percent
02/25/21	0	0	1	0	2	0	0	0	0	0	0	0	0	3	33	34
01:00	0	0	0	0	1	0	0	0	0	0	0	0	0	1	34	34
02:00	0	0	0	0	0	1	0	0	0	0	0	0	0	1	39	39
03:00	0	0	0	0	0	0	0	0	0	0	0	0	0	0	*	*
04:00	0	0	2	2	0	1	0	0	0	0	0	0	0	5	36	38
05:00	0	0	2	5	7	3	3	0	0	0	0	0	0	20	40	43
06:00	0	0	1	10	27	6	4	0	0	0	0	0	0	48	37	41
07:00	2	1	5	35	59	12	1	1	0	0	0	0	0	116	34	38
08:00	1	0	3	31	39	16	3	0	0	0	0	0	0	93	36	39
09:00	1	0	2	21	24	8	0	0	0	0	0	0	0	56	34	38
10:00	0	0	0	14	31	10	0	0	0	0	0	0	0	55	35	38
11:00	1	0	4	18	27	11	0	0	0	0	0	0	0	61	35	38
12 PM	1	0	2	21	38	16	2	0	0	0	0	0	0	80	36	39
13:00	1	2	3	16	40	13	1	1	0	0	0	0	0	77	36	39
14:00	0	0	0	30	53	19	1	0	0	0	0	0	0	103	36	38
15:00	1	2	1	30	53	20	0	0	0	0	0	0	0	107	35	38
16:00	2	0	5	36	55	12	2	0	0	0	0	0	0	112	34	38
17:00	2	2	8	31	39	11	1	1	0	0	0	0	0	95	34	38
18:00	1	0	1	11	29	5	2	0	0	0	0	0	0	49	34	39
19:00	0	0	5	12	18	4	1	0	0	0	0	0	0	40	34	38
20:00	1	0	0	6	15	1	0	0	0	0	0	0	0	23	34	34
21:00	0	0	0	2	7	3	0	0	0	0	0	0	0	12	37	39
22:00	0	0	2	3	3	4	0	0	0	0	0	0	0	12	37	39
23:00	0	0	0	1	1	1	1	0	0	0	0	0	0	4	42	44
Total	14	7	47	335	568	177	22	3	0	0	0	0	0	1173		
Percent	1.2%	0.6%	4.0%	28.6%	48.4%	15.1%	1.9%	0.3%	0.0%	0.0%	0.0%	0.0%	0.0%			
AM Peak	07:00	07:00	07:00	07:00	07:00	08:00	06:00	07:00						07:00		
Vol.	2	1	5	35	59	16	4	1						116		
PM Peak	16:00	13:00	17:00	16:00	16:00	15:00	12:00	13:00						16:00		
Vol.	2	2	8	36	55	20	2	1						112		
Grand Total	14	7	47	335	568	177	22	3	0	0	0	0	0	1173		
Percent	1.2%	0.6%	4.0%	28.6%	48.4%	15.1%	1.9%	0.3%	0.0%	0.0%	0.0%	0.0%	0.0%			

15th Percentile : 26 MPH
50th Percentile : 31 MPH
85th Percentile : 35 MPH
95th Percentile : 39 MPH

Stats 10 MPH Pace Speed : 26-35 MPH

Number of Vehicles > 30 MPH : 770
Percent of Vehicles > 30 MPH : 65.6%
Mean Speed(Average) : 32 MPH

Mario Perone, mperone1@verizon.net

tel (781) 587-0086 cell (781) 439-4999

Locust Street
north of Washington Street
City, State: Holliston, MA
Client: McM/M. Pompili

05388Gvolume
Site Code: Y-21015.11

Start Time	25-Feb-21		NB		SB		Combined		26-Feb		NB		SB		Combined	
	Thu		A.M.	P.M.	A.M.	P.M.	A.M.	P.M.	Fri		A.M.	P.M.	A.M.	P.M.	A.M.	P.M.
12:00			1	7	0	4	1	11			*	*	*	*	*	*
12:15			1	6	0	5	1	11			*	*	*	*	*	*
12:30			1	3	0	3	1	6			*	*	*	*	*	*
12:45			0	6	0	3	0	9			*	*	*	*	*	*
01:00			0	6	0	4	0	10			*	*	*	*	*	*
01:15			0	9	0	5	0	14			*	*	*	*	*	*
01:30			0	5	0	4	0	9			*	*	*	*	*	*
01:45			1	8	0	5	1	13			*	*	*	*	*	*
02:00			0	5	0	3	0	8			*	*	*	*	*	*
02:15			1	9	0	6	1	15			*	*	*	*	*	*
02:30			0	6	0	3	0	9			*	*	*	*	*	*
02:45			0	8	0	3	0	11			*	*	*	*	*	*
03:00			0	13	0	3	0	16			*	*	*	*	*	*
03:15			0	13	0	3	0	16			*	*	*	*	*	*
03:30			0	17	0	6	0	23			*	*	*	*	*	*
03:45			0	10	0	5	0	15			*	*	*	*	*	*
04:00			0	9	0	3	0	12			*	*	*	*	*	*
04:15			0	9	0	10	0	19			*	*	*	*	*	*
04:30			0	17	1	5	1	22			*	*	*	*	*	*
04:45			2	19	0	7	2	26			*	*	*	*	*	*
05:00			0	15	3	6	3	21			*	*	*	*	*	*
05:15			0	14	0	5	0	19			*	*	*	*	*	*
05:30			0	8	1	10	1	18			*	*	*	*	*	*
05:45			1	15	1	1	2	16			*	*	*	*	*	*
06:00			1	9	4	3	5	12			*	*	*	*	*	*
06:15			1	7	3	5	4	12			*	*	*	*	*	*
06:30			0	19	6	4	6	23			*	*	*	*	*	*
06:45			7	10	5	2	12	12			*	*	*	*	*	*
07:00			4	7	8	6	12	13			*	*	*	*	*	*
07:15			3	6	5	1	8	7			*	*	*	*	*	*
07:30			11	5	10	1	21	6			*	*	*	*	*	*
07:45			6	1	13	2	19	3			*	*	*	*	*	*
08:00			4	2	15	3	19	5			*	*	*	*	*	*
08:15			2	4	8	1	10	5			*	*	*	*	*	*
08:30			6	3	8	0	14	3			*	*	*	*	*	*
08:45			6	9	8	0	14	9			*	*	*	*	*	*
09:00			6	1	3	1	9	2			*	*	*	*	*	*
09:15			1	0	8	1	9	1			*	*	*	*	*	*
09:30			9	1	5	1	14	2			*	*	*	*	*	*
09:45			7	2	7	4	14	6			*	*	*	*	*	*
10:00			2	1	3	1	5	2			*	*	*	*	*	*
10:15			6	1	4	1	10	2			*	*	*	*	*	*
10:30			0	1	4	1	4	2			*	*	*	*	*	*
10:45			2	1	6	1	8	2			*	*	*	*	*	*
11:00			3	1	5	0	8	1			*	*	*	*	*	*
11:15			2	1	5	0	7	1			*	*	*	*	*	*
11:30			8	0	7	0	15	0			*	*	*	*	*	*
11:45			2	0	4	0	6	0			*	*	*	*	*	*
Total			107	329	160	151	267	480			0	0	0	0	0	0
Day Total			436		311		747				0		0		0	
% Total			14.3%	44.0%	21.4%	20.2%					0.0%	0.0%	0.0%	0.0%		
Peak	-		06:45	04:30	07:30	04:15	07:30	04:15	-	-	-	-	-	-	-	-
Vol.	-		25	65	46	28	69	88	-	-	-	-	-	-	-	-
P.H.F.			0.568	0.855	0.767	0.700	0.821	0.846								
ADT			ADT 747		AADT 747											

tel (781) 587-0086 cell (781) 439-4999

05388Gclass

Site Code: Y-21015.11

Northbound

[illegible]

Mario Perone, mperone1@verizon.net
tel (781) 587-0086 cell (781) 439-4999

05388Gclass
Site Code: Y-21015.11

[illegible]

Transportation Data Corporation

Mario Perone, mperone1@verizon.net
tel (781) 587-0086 cell (781) 439-4999

Page 1

Locust Street
north of Washington Street
City, State: Holliston, MA
Client: McM/M. Pompili

05388Gspeed
Site Code: Y-21015.11

Northbound

Start Time	15	16	21	26	31	36	41	46	51	56	61	66	71	Total	85th Percent	95th Percent
02/25/21	0	0	0	1	2	0	0	0	0	0	0	0	0	3	33	34
01:00	0	0	0	0	1	0	0	0	0	0	0	0	0	1	34	34
02:00	0	0	0	1	0	0	0	0	0	0	0	0	0	1	29	29
03:00	0	0	0	0	0	0	0	0	0	0	0	0	0	0	*	*
04:00	0	0	0	1	1	0	0	0	0	0	0	0	0	2	33	34
05:00	0	0	0	1	0	0	0	0	0	0	0	0	0	1	29	29
06:00	0	0	1	3	4	1	0	0	0	0	0	0	0	9	34	37
07:00	0	1	2	9	10	2	0	0	0	0	0	0	0	24	34	36
08:00	0	0	2	8	8	0	0	0	0	0	0	0	0	18	33	34
09:00	0	1	4	10	5	3	0	0	0	0	0	0	0	23	34	38
10:00	1	0	1	5	3	0	0	0	0	0	0	0	0	10	32	34
11:00	0	0	3	7	5	0	0	0	0	0	0	0	0	15	32	34
12 PM	0	1	0	12	8	1	0	0	0	0	0	0	0	22	33	34
13:00	0	0	4	9	14	1	0	0	0	0	0	0	0	28	33	34
14:00	0	0	3	11	13	1	0	0	0	0	0	0	0	28	33	34
15:00	0	0	3	30	13	7	0	0	0	0	0	0	0	53	34	38
16:00	0	1	5	20	27	1	0	0	0	0	0	0	0	54	33	34
17:00	0	1	8	21	20	2	0	0	0	0	0	0	0	52	33	34
18:00	0	0	10	25	9	1	0	0	0	0	0	0	0	45	31	34
19:00	0	0	3	9	6	1	0	0	0	0	0	0	0	19	33	35
20:00	0	0	2	10	3	3	0	0	0	0	0	0	0	18	35	38
21:00	0	0	0	1	2	1	0	0	0	0	0	0	0	4	37	39
22:00	0	0	1	2	1	0	0	0	0	0	0	0	0	4	32	34
23:00	0	0	0	1	1	0	0	0	0	0	0	0	0	2	33	34
Total	1	5	52	197	156	25	0	0	0	0	0	0	0	436		
Percent	0.2%	1.1%	11.9%	45.2%	35.8%	5.7%	0.0%	0.0%	0.0%	0.0%	0.0%	0.0%	0.0%			
AM Peak	10:00	07:00	09:00	09:00	07:00	09:00								07:00		
Vol.	1	1	4	10	10	3								24		
PM Peak		12:00	18:00	15:00	16:00	15:00								16:00		
Vol.		1	10	30	27	7								54		
Grand Total	1	5	52	197	156	25	0	0	0	0	0	0	0	436		
Percent	0.2%	1.1%	11.9%	45.2%	35.8%	5.7%	0.0%	0.0%	0.0%	0.0%	0.0%	0.0%	0.0%			

15th Percentile : 25 MPH
50th Percentile : 29 MPH
85th Percentile : 33 MPH
95th Percentile : 35 MPH

Stats 10 MPH Pace Speed : 26-35 MPH

Number of Vehicles > 30 MPH : 181
Percent of Vehicles > 30 MPH : 41.5%
Mean Speed(Average) : 30 MPH

Transportation Data Corporation

Mario Perone, mperone1@verizon.net
tel (781) 587-0086 cell (781) 439-4999

Locust Street
north of Washington Street
City, State: Holliston, MA
Client: McM/M. Pompili
Southbound

05388Gspeed
Site Code: Y-21015.11

Start Time	15	16	21	26	31	36	41	46	51	56	61	66	71	Total	85th Percent	95th Percent
02/25/21	0	0	0	0	0	0	0	0	0	0	0	0	0	0	*	*
01:00	0	0	0	0	0	0	0	0	0	0	0	0	0	0	*	*
02:00	0	0	0	0	0	0	0	0	0	0	0	0	0	0	*	*
03:00	0	0	0	0	0	0	0	0	0	0	0	0	0	0	*	*
04:00	0	0	0	0	1	0	0	0	0	0	0	0	0	1	34	34
05:00	0	0	0	2	2	1	0	0	0	0	0	0	0	5	36	38
06:00	0	0	0	2	8	7	1	0	0	0	0	0	0	18	38	40
07:00	1	1	2	9	11	10	2	0	0	0	0	0	0	36	38	40
08:00	1	0	1	10	18	8	1	0	0	0	0	0	0	39	36	39
09:00	0	0	0	4	10	7	2	0	0	0	0	0	0	23	38	42
10:00	1	0	1	3	7	5	0	0	0	0	0	0	0	17	37	39
11:00	0	0	2	4	13	1	1	0	0	0	0	0	0	21	34	39
12 PM	0	0	1	3	8	3	0	0	0	0	0	0	0	15	36	38
13:00	0	0	1	4	5	7	1	0	0	0	0	0	0	18	38	40
14:00	0	1	2	3	4	5	0	0	0	0	0	0	0	15	37	39
15:00	0	0	1	4	8	4	0	0	0	0	0	0	0	17	36	38
16:00	0	0	3	9	10	3	0	0	0	0	0	0	0	25	34	37
17:00	0	0	1	5	11	4	1	0	0	0	0	0	0	22	37	39
18:00	0	0	0	2	10	1	0	1	0	0	0	0	0	14	34	46
19:00	0	0	0	4	2	3	1	0	0	0	0	0	0	10	39	42
20:00	0	0	0	0	2	2	0	0	0	0	0	0	0	4	38	39
21:00	0	0	0	1	2	1	2	1	0	0	0	0	0	7	44	48
22:00	0	0	0	2	1	1	0	0	0	0	0	0	0	4	37	38
23:00	0	0	0	0	0	0	0	0	0	0	0	0	0	0	*	*
Total	3	2	15	71	133	73	12	2	0	0	0	0	0	311		
Percent	1.0%	0.6%	4.8%	22.8%	42.8%	23.5%	3.9%	0.6%	0.0%	0.0%	0.0%	0.0%	0.0%			
AM Peak	07:00	07:00	07:00	08:00	08:00	07:00	07:00							08:00		
Vol.	1	1	2	10	18	10	2							39		
PM Peak		14:00	16:00	16:00	17:00	13:00	21:00	18:00						16:00		
Vol.		1	3	9	11	7	2	1						25		
Grand Total	3	2	15	71	133	73	12	2	0	0	0	0	0	311		
Percent	1.0%	0.6%	4.8%	22.8%	42.8%	23.5%	3.9%	0.6%	0.0%	0.0%	0.0%	0.0%	0.0%			

15th Percentile : 26 MPH
50th Percentile : 32 MPH
85th Percentile : 37 MPH
95th Percentile : 39 MPH

Stats 10 MPH Pace Speed : 31-40 MPH

Number of Vehicles > 30 MPH : 220
Percent of Vehicles > 30 MPH : 70.7%
Mean Speed(Average) : 33 MPH