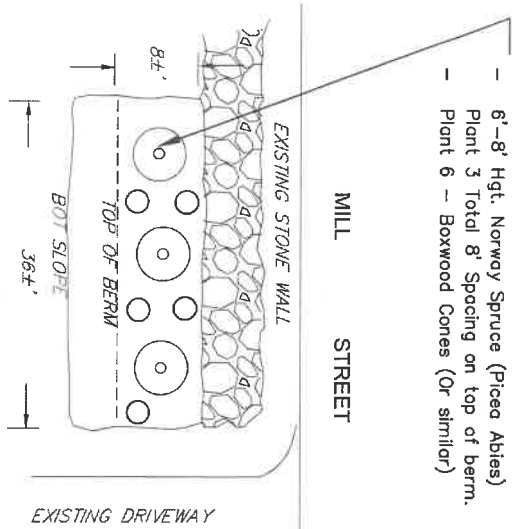
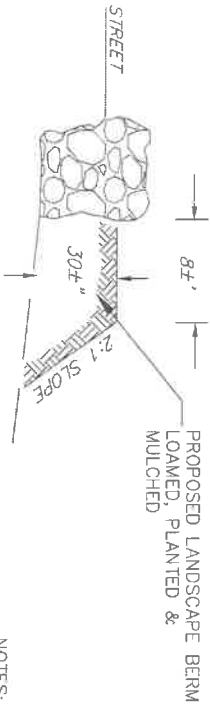


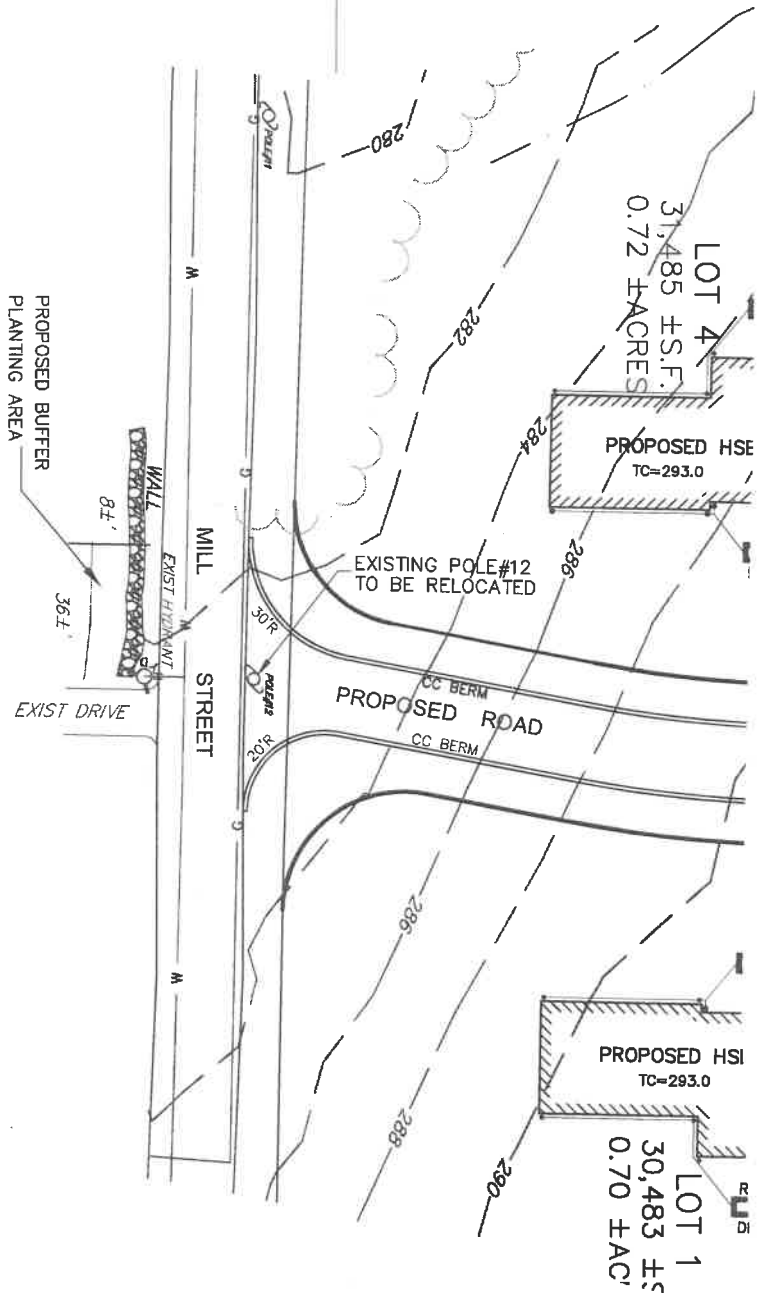
- PROPOSED SCREENING/PLANTING
- 6'-8' Hgt. Norway Spruce (Picea Abies)
 - Plant 3 Total 8' Spacing on top of berm.
 - Plant 6 - Boxwood Cones (Or similar)



PLANTING DETAIL
n.t.s.



BERM DETAIL
n.t.s.



JOHN & BRENDA FANNON
n/f
129 MILL STREET
HOLLISTON, MA

- NOTES:
1. THERE 3 EXISTING DEAD TREES WITHIN THE PLANTING AREA TO BE REMOVED.
 2. THE TOP OF PLANTING AREA SHALL BE APPROXIMATELY 8' WIDE.
 3. THE TOP ELEVATION OF THE PLANTING AREA SHALL BE APPROX. 1' BELOW THE TOP OF THE EXISTING STONE WALL.
 4. THE AREA SHALL BE COVERED WITH 2-4" MULCH.

DEFINITIVE OPEN SPACE SUBDIVISION
"TRIANGLE FARM"
"Landscape Plan for 129 Mill Street"
HOLLISTON, MASSACHUSETTS
NOVEMBER 3, 2020 SCALE: 1"=30'
PREPARED FOR:
THOMAS MURCH et al., TRUSTEE
MURCH PRENTICE REALTY TRUST
5855 LYMAN ROAD
TURI, NY 13473