

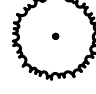

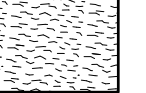
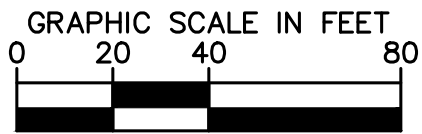
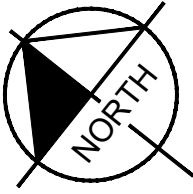
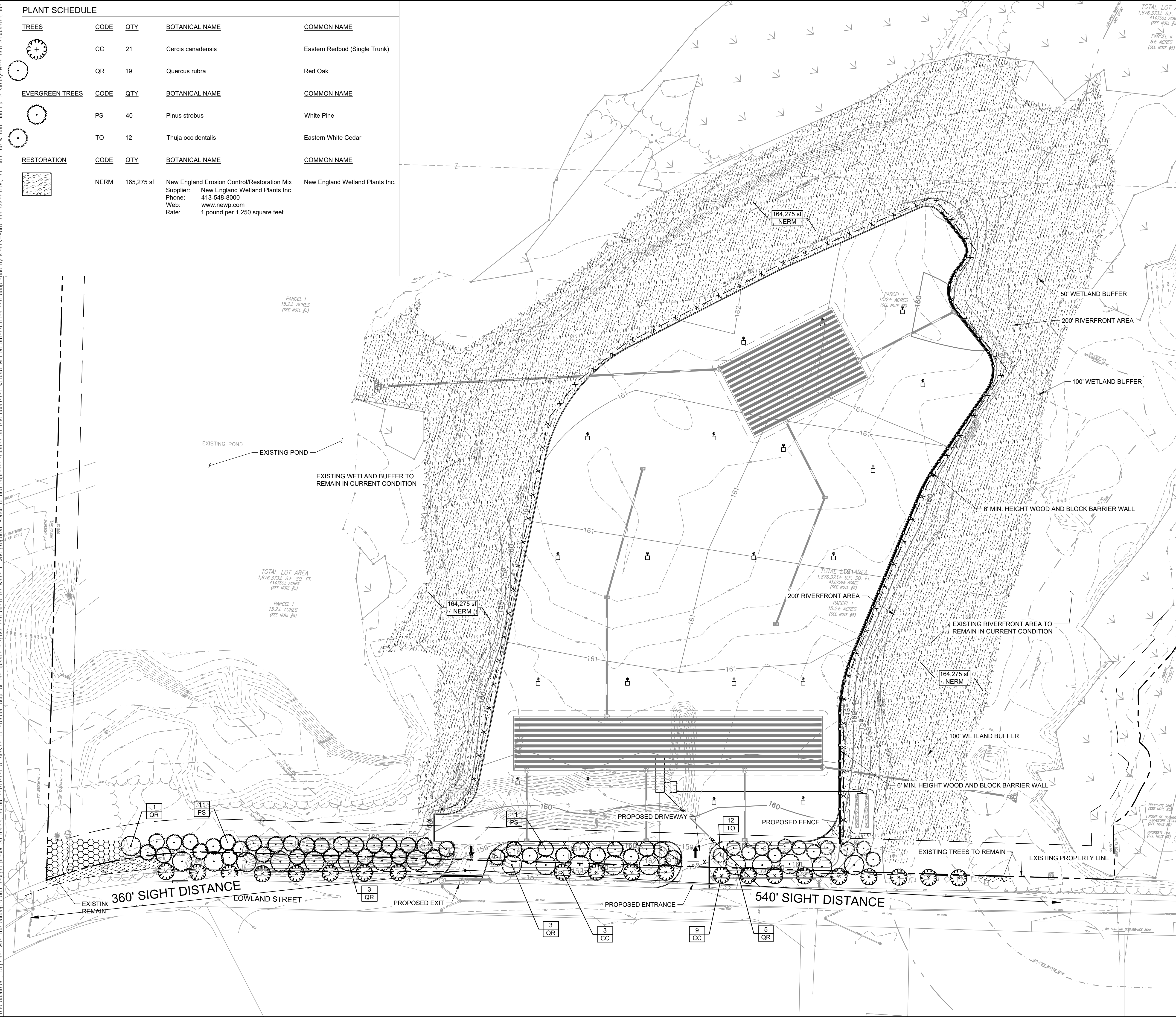


PLANT SCHEDULE				
<u>TREES</u>	<u>CODE</u>	<u>QTY</u>	<u>BOTANICAL NAME</u>	<u>COMMON NAME</u>
	CC	21	Cercis canadensis	Eastern Redbud (Single Trunk)
	QR	19	Quercus rubra	Red Oak
<u>EVERGREEN TREES</u>	<u>CODE</u>	<u>QTY</u>	<u>BOTANICAL NAME</u>	<u>COMMON NAME</u>
	PS	40	Pinus strobus	White Pine
	TO	12	Thuja occidentalis	Eastern White Cedar
<u>RESTORATION</u>	<u>CODE</u>	<u>QTY</u>	<u>BOTANICAL NAME</u>	<u>COMMON NAME</u>
	NERM	165,275 sf	New England Erosion Control/Restoration Mix Supplier: New England Wetland Plants Inc Phone: 413-548-8000 Web: www.newp.com Rate: 1 pound per 1,250 square feet	New England Wetland Plants Inc.



## LANDSCAPE LEGEND

- EXISTING TREELINE
- NEWLY ESTABLISHED TREELINE

**NOTES:**

- ALL DISTURBED AREAS NOT COVERED BY LANDSCAPING SHALL BE SEEDED & ESTABLISHED PER THE MASSACHUSETTS DEPARTMENT OF ENVIRONMENTAL PROTECTION EROSION AND SEDIMENT CONTROL GUIDELINES AND SEEDING SPECIFICATIONS ON THIS PLAN

Street Buffer Strip		Art VII Sec 7.4.2(C)(1)
Total Street Frontage	900 LF	
Existing Trees To Remain	250 LF (See Note 1)	
Proposed Driveway	80 LF	
Net Street Frontage	570 LF	
	<b>REQUIRED</b>	<b>PROVIDED</b>
<b>Trees</b> (1 per 30 LF of Net Street Frontage)	<b>19 Trees</b>	<b>21 Trees</b>

Notes:

1. Per Section 7.4.1(C) of Article VII, the Street Buffer Strip shall preserve and credit existing trees. The remaining street frontage shall be planted with deciduous trees at a rate of 1 tree per 30 LF per the requirements of Section 7.4.2(C)(1)
2. Trees in the Street Buffer Strip are underneath overhead utilities. Tree species in this location have been selected per the guidance of Eversource Recommended Trees under Utilities.

<b>Large Parking Area</b>		<i>Art VII Sec 7.4.2(C)(3)</i>
<u>Parking Area</u>	201,202 SF	<b>REQUIRED PROVIDED</b>
<b>Landscape Space</b> (10% of Parking Area)	<b>20,120 SF</b>	<b>23,953 SF</b> 2,896 SF Ex. Trees 71 Proposed Trees (See Note 2)

**Notes:**

1. The use of this site is for storing cars prior to auction. The required Landscape Space has been adjacent to Lowland Street in an effort to maximize tree preservation [Sec 7.4.2(E)(6)] and minimize site impacts [Sec 7.4.2(E)(4)] & [Sec 7.4.2(E)(7)]. Pursuant to Article VII, Section 7.4.4 the applicant requests the Planning Board approve this revised location
2. Per Section 7.4.1(C) of Article VII, the Large parking area shall preserve and credit existing trees. The remaining landscape space square footage shall be planted with a mix of evergreen and deciduous trees at a rate of 1 tree per 300 SF.



