

GENERAL NOTES

1	STEEL COLUMN, SEE STRUCTURAL. ALSO REFER TO COLUMN SLEEVE DETAIL C3/A3.605
2	CONCRETE PRECAST, SEE STRUCTURAL
3	14" - 0" W X 16" - 0" H OVERHEAD SECTIONAL DRIVE-IN DOOR, SEE OVERHEAD DOOR SCHEDULE
4	DRIVE-IN RAMP W/ CONCRETE RETAINING WALL AND GALV. STL. PIPE GUARDRAIL
5	9" - 0" W X 10" - 0" H DOCK DOOR, SEE OVERHEAD DOOR SCHEDULE
6	HOLLOW METAL DOOR AND FRAME - PAINTED (SEE DOOR SCHEDULE) W/ GALV. STL. DOCK STAIR, SEE DTL. A1/A6.101
7	HOLLOW METAL DOOR AND FRAME - PAINTED (SEE DOOR SCHEDULE) W/ CONC. STOMP / WALK

8	KNOCKOUT FOR MECHANICAL LOUVER, SIZE AND LOCATIONS TO BE COORDINATED WITH MECHANICAL.
9	REFINISHED ALUMINUM STOREFRONT SYSTEM
10	PROVIDE RIGID INSULATION AT INSIDE FACE OF FOUNDATION - SHOWN DASHED AT PERIMETER OF OFFICE
11	VAPOR BARRIER AT FUTURE OFFICE AREA, EXTENT SHOWN HATCHED
12	STEEL BRACING, SEE STRUCTURAL
13	4' - 0" W X 12' - 0" H KNOCKOUT FUTURE WINDOW
14	KNOX BOX, RECESSED MOUNTED INTO CONCRETE PANEL

15	ELECTRICAL EQUIPMENT W/ BOLLARD PROTECTION, SEE ELECTRICAL DRAWINGS
16	ROOF ACCESS LADDER, SEE SHT. A6.140
17	INTERIOR PIPE BOLLARD, SEE DTL. A1/A3.702
18	FIRE RISER W/ BOLLARD PROTECTION, SEE FIRE PROTECTION DRAWINGS



Building A
Holliston, MA

[illegible]

DRAWING TITLE
OVERALL PLAN

Job #	20.0091
-------	---------

PLAN NOTES

GENERAL NOTES

1. BUILDING COLUMN GRID IS TO THE EXTERIOR FACE OF CONCRETE PANEL
2. PARTITION TYPES - SEE SHEET A5.101
3. DOOR SCHEDULE AND DOOR TYPES - SEE SHEET A5.201
4. STOREFRONT / WINDOW FRAME TYPES - SEE SHEET A5.301
5. REFER TO ENLARGED PLANS FOR ADDITIONAL DIMENSIONS & PARTITION TYPES NOT SHOWN.
6. TILT-UP OPENING DIMENSIONS ARE TO THE ROUGH OPENING, U.N.O.
7. REFER TO A3.702 FOR PROTECTION DETAILS AT DOORS, EQUIPMENT, ETC

KEYED NOTES

- | | |
|---|--|
| 1 | STEEL COLUMN. SEE STRUCTURAL.
ALSO REFER TO COLUMN SLEEVE DETAIL, C3/A3/605 |
| 2 | CONCRETE PRECAST. SEE STRUCTURAL |
| 3 | 14" - 0" W 16" - 0" H OVERHEAD SECTIONAL DRIVE-IN DOOR. SEE OVERHEAD DOOR SCHEDULE |
| 4 | DRIVE-IN RAMP W/ CONCRETE RETAINING WALL AND GALV. STL. PIPE GUARDRAIL |
| 5 | 9" - 0" W 10" - 0" H DOCK DOOR. SEE OVERHEAD DOOR SCHEDULE |
| 6 | HOLLOW METAL DOOR AND FRAME - PAINTED (SEE DOOR SCHEDULE) W/ GALV. STL. DOCK STAIR. SEE DTL. A1/A6/101 |
| 7 | HOLLOW METAL DOOR AND FRAME - PAINTED (SEE DOOR SCHEDULE) W/ CONC. STOOFF / WALK |

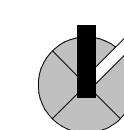
 \wedge

- | | |
|----|---|
| 8 | KNOCK BOX, METALLICALLY COVER, SIZE AND LOCATIONS TO BE COORDINATED WITH MECHANICAL. |
| 9 | PREFINISHED ALUMINUM STOREFRONT SYSTEM |
| 10 | PROVIDE RIGID INSULATION AT INSIDE FACE OF FOUNDATION - SHOWN DASHED AT PERIMETER OF OFFICE |
| 11 | VAPOR BARRIER AT FUTURE OFFICE AREA, EXTENT SHOWN HATCHED |
| 12 | STEEL BRACING, SEE STRUCTURAL |
| 13 | 4' - 0" W X 12' - 0" H KNOCKOUT FUTURE WINDOW |
| 14 | KNOX BOX, RECESSED MOUNTED INTO CONCRETE PANEL |

 \wedge

- | | |
|----|--|
| 15 | ELECTRICAL DRAWINGS |
| 16 | ROOF ACCESS LADDER, SEE SHT. A6.140 |
| 17 | INTERIOR PIPE BOLLARD, SEE DTL. A1/A3.702 |
| 18 | FIRE RISER W/ BOLLARD PROTECTION, SEE FIRE PROTECTION DRAWINGS |

KEY PLAN



B1 ENLARGED OFFICE PLAN
A2.311 1" = 10'-0"

CLAYCO
THE ART & SCIENCE OF BUILDING

Lamar Johnson
Collaborative

35 EAST WACKER DRIVE, SUITE 1500
CHICAGO, IL 60601
PH 312.658.2747

**PROGRESS
PRINT**

CRG Hopping Brook

[illegible]

BUILDING MAP

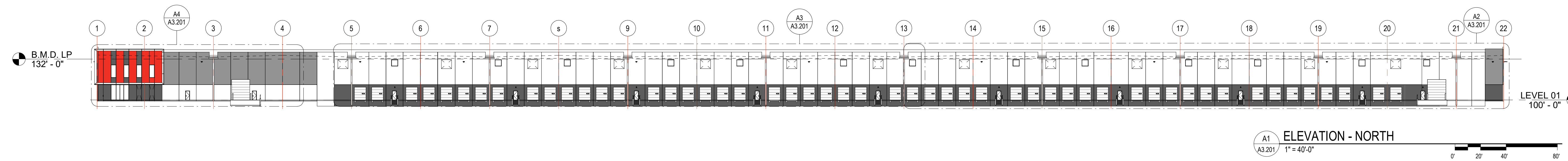
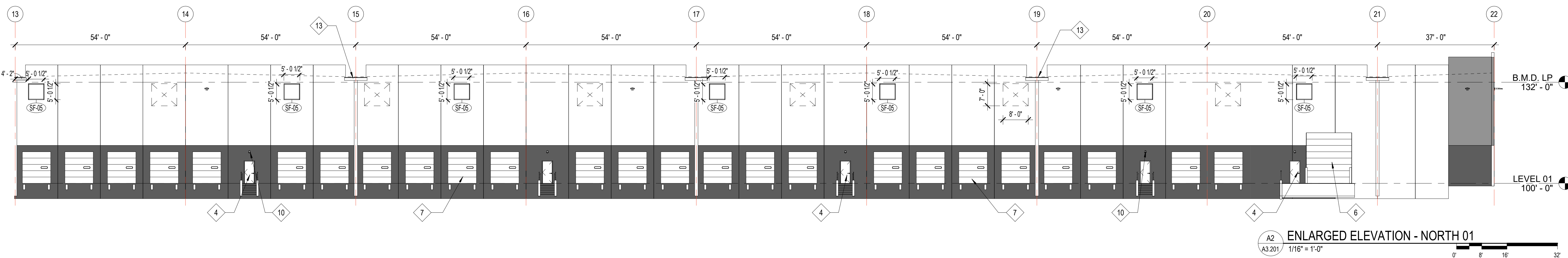
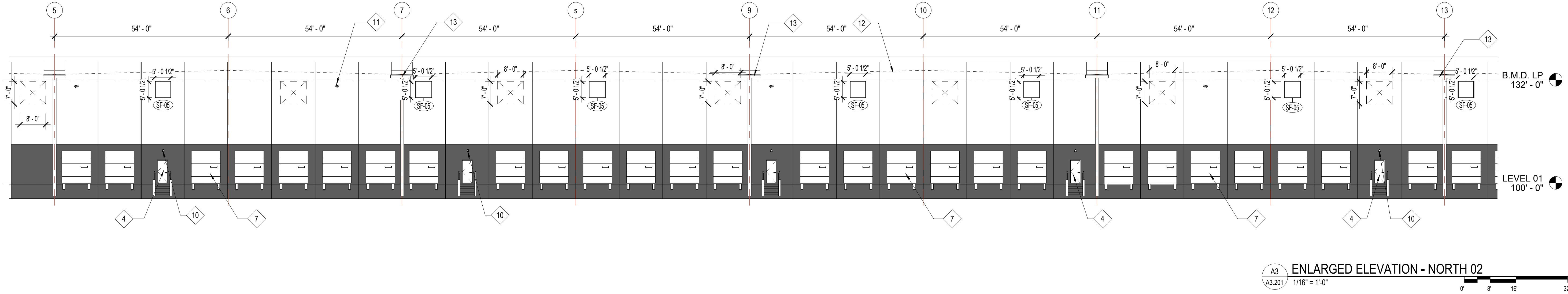
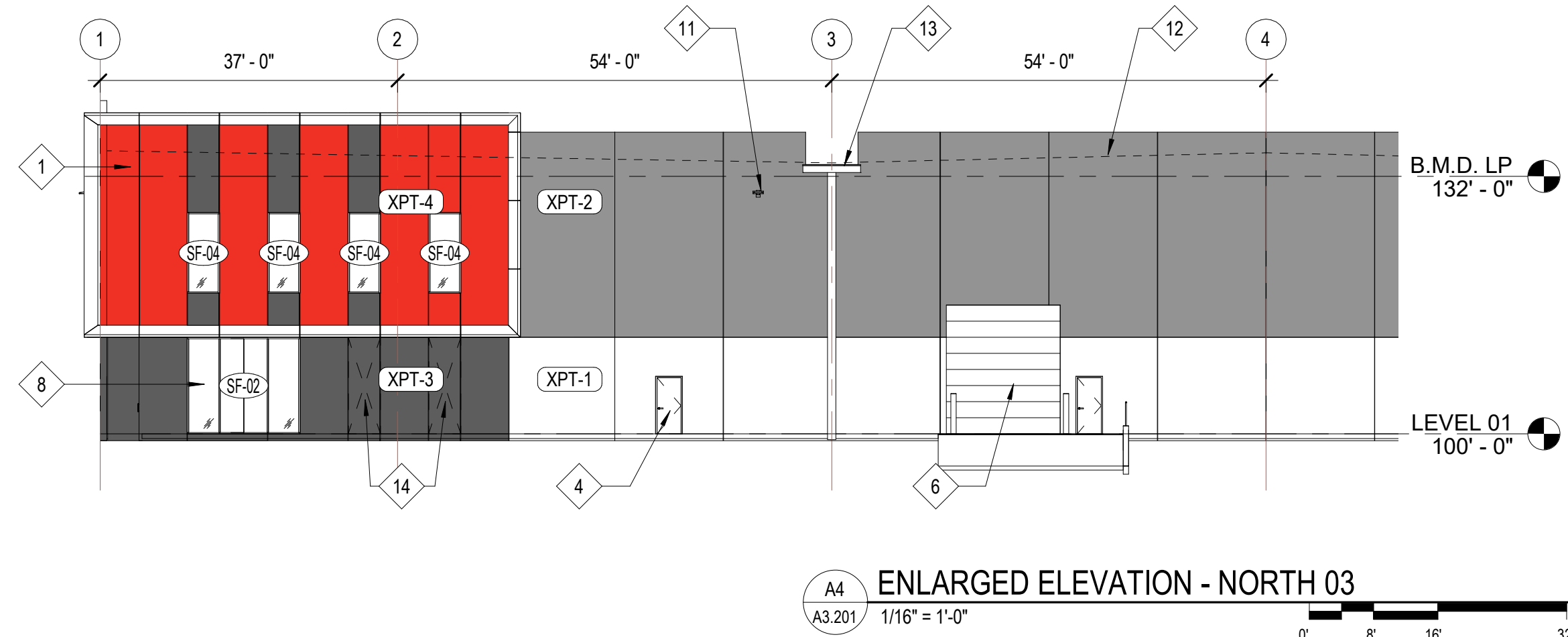
DRAWING TITLE
ENLARGED PLAN

DRAWING NO.
A2.311

Job #	20.0091
-------	---------

EXTERIOR ELEVATION NOTES

GENERAL NOTES	KEYED NOTES														LEGEND									
1. PROVIDE TCA GRADE 'A' PATCHING AT OFFICE AREA. ALL OTHER AREAS TO BE TCA GRADE 'B' PATCHING. 2. ALL DIMENSIONS ARE TO FACE OF CONCRETE OR ROUGH OPENING. RE FLOOR PLANS, SECTIONS, AND ELEVATIONS. 3. ALL EXPOSED SIDES OF CONCRETE PRECAST PANEL TO BE PAINTED. 4. CONCRETE FILLED BOLLARDS TO BE PAINTED "SAFETY YELLOW". 5. ALL DOWNSPOUTS TO MATCH ADJACENT WALL COLOR. SEE BELOW FOR COLOR. 6. ALL EXTERIOR HOLLOW METAL DOORS, FRAMES AND OVERHEAD DOORS TO BE PAINTED TO MATCH ADJACENT WALL COLOR. 7. ALL PRECAST DIMENSIONS TAKEN FROM CENTER OF REVEAL. 8. PROVIDE REVEAL AT TRANSITION OF PAINT COLOR (HORIZONTAL & VERTICAL). SEE SHEET A3.205 FOR EXTERIOR CONCRETE PANEL JOINTS AND REVEAL PROFILES. U.O.N. 10. EXTERIOR SECTIONAL DOORS TO MATCH ADJACENT WALL COLOR. CUSTOM FACTORY FINISH. 11. DO NOT PROVIDE A REVEAL AT THE KNOCK OUT PANELS.	<div>1</div> PRECAST CONCRETE PANEL, PAINTED. SEE STRUCTURAL	<div>2</div> "Y" TYPE REVEAL IN PRECAST CONCRETE PANEL, SEE A3/A3.205	<div>3</div> CONCRETE PRECAST PANEL JOINT, SEE A3/A3.205	<div>4</div> HOLLOW METAL DOOR AND FRAME - PAINTED (SEE DOOR SCHEDULE) W/ GALV. STL. DOOR STAR, SEE E1/A3.201	<div>5</div> HOLLOW METAL DOOR AND FRAME - PAINTED (SEE DOOR SCHEDULE) W/ CONCRETE STOOP / WALK	<div>6</div> 14'-0"W x 16'-0"H OVERHEAD SECTIONAL DRIVE-IN DOOR, SEE OVERHEAD DOOR SCHEDULE	<div>7</div> 9'-0"W x 10'-0"H DOCK DOOR, FULLY EQUIPPED, SEE OVERHEAD DOOR SCHEDULE	<div>8</div> PREFINISHED ALUMINUM STOREFRONT SYSTEM, SEE SHEET A5.301	<div>9</div> COMPOSITE MTL. PANEL (CMP-01) ON MTL. STUD FRAMING - MITERED CORNERS, TYP.	<div>10</div> EMERGENCY LIGHT FIXTURE CENTERED ABOVE DOOR	<div>11</div> WALL PACK LIGHTING FIXTURE - CENTER ABOVE OPENING BELOW OR CENTER IN PANEL. VERIFY W/ ELECTRICAL DRAWINGS AND ARCHITECTURAL ELEVATIONS FOR EXACT LOCATIONS	<div>12</div> ROOF LINE BEYOND	<div>13</div> PREFINISHED METAL SCUPPER AND DOWNSPOUT SYSTEM, SEE ROOF PLAN FOR SIZES	<div>14</div> KNOX BOX, RECESSED IN CONCRETE PANEL	<div>15</div> REVEAL / PAINT TO WRAP END OF PANEL	<div>16</div> KNOCKOUT FOR MECHANICAL LOUVER, TYP. SIZES & LOCATIONS TO BE COORDINATED WITH MECHANICAL	<div>17</div> PREFIN. ALUM. CLEARSTORY WINDOW, SEE SHEET A5.301	<div>18</div> HOLLOW METAL DOOR AND FRAME - PAINTED (SEE DOOR SCHEDULE)	<div>19</div> KNOCK-OUT IN CONC. PRECAST PANEL, SHOWN DASHED.	<div>XPT-1</div> - SHERWIN WILLIAMS - SW 7064, PASSIVE	<div>XPT-2</div> - SHERWIN WILLIAMS - SW 7073, NETWORK GRAY	<div>XPT-3</div> - SHERWIN WILLIAMS - SW 7069, IRON ORE	<div>XPT-4</div> - SHERWIN WILLIAMS COLOR, CLAYCO RED	<div>CMP-01</div> - COMPOSITE METAL PANEL, REYNOLBOND - COLORWELD 500 SILVERSMITH



CLAYCO
THE ART & SCIENCE OF BUILDING
35 EAST WACKER DRIVE, SUITE 1300
CHICAGO, IL 60601
PH: 312.683.0747 / F: 312.680.7864

Lamar Johnson
Collaborative
38 EAST WACKER DRIVE, SUITE 1500
CHICAGO, IL 60601
PH: 312.683.0747

PROGRESS
PRINT

CRG Hopping Brook
Building A
Holliston, MA

DRAWING ISSUE	
DESCRIPTION	DATE
Progress Set 01	07.22.2020
Progress Set 01	07.31.2020
Progress Set 02	08.10.2020
Design Revision	03.09.2022

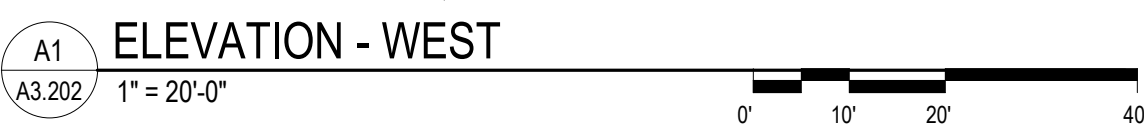
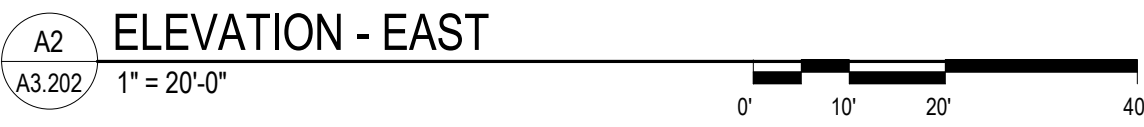
BUILDING MAP

DRAWING TITLE
BUILDING ELEVATIONS - NORTH

DRAWING NO.
A3.201

Job # 20.0091

GENERAL NOTES	KEYED NOTES			LEGEND	
1. PROVIDE TCA GRADE 'K' PATCHING AT OFFICE AREA. ALL OTHER AREAS TO BE TCA GRADE 'B' PATCHING	1. PRECAST CONCRETE PANEL, PAINTED. SEE STRUCTURAL	8. PREFINISHED ALUMINUM STOREFRONT SYSTEM. SEE SHEET A5.301	15. REVEAL / PAINT TO WRAP END OF PANEL.	(XPT-1) - SHERWIN WILLIAMS - SW 7054, PASSIVE	5
2. ALL DIMENSIONS ARE TO FACE OF CONCRETE OR ROUGH OPENING. RE: FLOOR PLANS, SECTIONS, AND ELEVATIONS	2. "Y" TYPE REVEAL IN PRECAST CONCRETE PANEL. SEE A3A3.605	9. COMPOSITE MTL PANEL (CMP-01) ON MTL. STUD FRAMING - MITERED CORNERS, TYP.	16. KNOCKOUT FOR MECHANICAL LOUVER, TYP. SIZES & LOCATIONS TO BE COORDINATED WITH MECHANICAL.	(XPT-2) - SHERWIN WILLIAMS - SW 7073, NETWORK GRAY	
3. ALL EXPOSED SIDES OF CONCRETE PRECAST PANEL TO BE PAINTED.	3. CONCRETE PRECAST PANEL JOINT. SEE A2A3.605	10. EMERGENCY LIGHT FIXTURE CENTERED ABOVE DOOR	17. PREFIN. ALUM. CLEARSTORY WINDOW. SEE SHEET A5.301	(XPT-3) - SHERWIN WILLIAMS - SW 7005, IRON ORE	
4. CONCRETE FILLED BOLLARDS TO BE PAINTED "SAFETY YELLOW".	4. HOLLOW METAL DOOR AND FRAME - PAINTED (SEE DOOR SCHEDULE) W/ GALV. STL. DOCK STAR. SEE E1A3.501	11. WALL PACK LIGHTING FIXTURE - CENTER ABOVE OPENING BELOW OR CENTER IN PANEL. VERIFY W/ ELECTRICAL DRAWINGS AND ARCHITECTURAL ELEVATIONS FOR EXACT LOCATIONS	18. HOLLOW METAL DOOR AND FRAME - PAINTED (SEE DOOR SCHEDULE)	(XPT-4) - SHERWIN WILLIAMS COLOR, CLAYCO RED	
5. ALL DOWNSPOUTS TO MATCH ADJACENT WALL COLOR. SEE BELOW FOR COLOR.	5. HOLLOW METAL DOOR AND FRAME - PAINTED (SEE DOOR SCHEDULE) W/ CONCRETE STOOP / WALK	12. ROOF LINE BEYOND	19. KNOCK-OUT IN CONC. PRECAST PANEL, SHOWN DASHED.	(CMP-01) - COMPOSITE METAL PANEL, REYNOLBOND - COLORWELD 500 SILVERSMITH	
6. ALL EXTERIOR HOLLOW METAL DOORS, FRAMES AND OVERHEAD DOORS TO BE PAINTED TO MATCH ADJACENT WALL COLOR.	6. 14'-0"W x 16'-0"W OVERHEAD SECTIONAL DRIVE-IN DOOR. SEE OVERHEAD DOOR SCHEDULE	13. PREFINISHED METAL SCUPPER AND DOWNSPOUT SYSTEM. SEE ROOF PLAN FOR SIZES			
7. ALL PRECAST DIMENSIONS TAKEN FROM CENTER OF REVEAL.	7. 9'-0"W x 10'-0"W DOCK DOOR, FULLY EQUIPPED. SEE OVERHEAD DOOR SCHEDULE	14. KNOX BOX, RECESSED IN CONCRETE PANEL			
8. PROVIDE REVEAL AT TRANSITION OF PAINT COLOR (HORIZONTAL & VERTICAL).					
9. SEE SHEET A3.605 FOR EXTERIOR CONCRETE PANEL JOINTS AND REVEAL PROFILES. U.O.N.					
10. EXTERIOR SECTIONAL DOORS TO MATCH ADJACENT WALL COLOR.					
11. DO NOT PROVIDE A REVEAL AT THE KNOCK OUT PANELS.					



EXTERIOR ELEVATION NOTES

GENERAL NOTES	KEYED NOTES			LEGEND	
1. PROVIDE TCA GRADE 'A' PATCHING AT OFFICE AREA. ALL OTHER AREAS TO BE TCA GRADE 'B' PATCHING. 2. ALL DIMENSIONS ARE TO FACE OF CONCRETE OR ROUGH OPENING. RE FLOOR PLANS, SECTIONS, AND ELEVATIONS. 3. ALL EXPOSED SIDES OF CONCRETE PRECAST PANEL TO BE PAINTED. 4. CONCRETE FILLED BOLLARDS TO BE PAINTED "SAFETY YELLOW". 5. ALL DOWNSPOUTS TO MATCH ADJACENT WALL COLOR. SEE BELOW FOR COLOR. 6. ALL EXTERIOR HOLLOW METAL DOORS, FRAMES AND OVERHEAD DOORS TO BE PAINTED TO MATCH ADJACENT WALL COLOR. 7. ALL PRECAST DIMENSIONS TAKEN FROM CENTER OF REVEAL. 8. PROVIDE REVEAL AT TRANSITION OF PAINT COLOR (HORIZONTAL & VERTICAL). 9. SEE SHEET A3.005 FOR EXTERIOR CONCRETE PANEL JOINTS AND REVEAL PROFILES, U.O.N. 10. EXTERIOR SECTIONAL DOORS TO MATCH ADJACENT WALL COLOR. CUSTOM FACTORY FINISH. 11. DO NOT PROVIDE A REVEAL AT THE KNOCK OUT PANELS.	1. PRECAST CONCRETE PANEL, PAINTED, SEE STRUCTURAL 2. "V" TYPE REVEAL IN PRECAST CONCRETE PANEL, SEE A3.005 3. CONCRETE PRECAST PANEL JOINT, SEE A2.005 4. HOLLOW METAL DOOR AND FRAME - PAINTED (SEE DOOR SCHEDULE) W/ GALV. STL. DOOR STAIR, SEE E1.001 5. HOLLOW METAL DOOR AND FRAME - PAINTED (SEE DOOR SCHEDULE) W/ CONCRETE STOOP / WALK 6. 14'-0" W x 16'-0" H OVERHEAD SECTIONAL DRIVE-IN DOOR, SEE OVERHEAD DOOR SCHEDULE 7. 9'-0" W x 10'-0" H DOOR DOOR, FULLY EQUIPPED, SEE OVERHEAD DOOR SCHEDULE	8. PREFINISHED ALUMINUM STOREFRONT SYSTEM, SEE SHEET A5.301 9. COMPOSITE MTL. PANEL (CMP-01) ON MTL. STUD FRAMING - MITERED CORNERS, TYP. 10. EMERGENCY LIGHT FIXTURE CENTERED ABOVE DOOR 11. WALL PACK LIGHTING FIXTURE - CENTER ABOVE OPENING BELOW OR CENTER IN PANEL. VERIFY W/ ELECTRICAL DRAWINGS AND ARCHITECTURAL ELEVATIONS FOR EXACT LOCATIONS 12. ROOF LINE BEYOND 13. PREFINISHED METAL SCUPPER AND DOWNSPOUT SYSTEM, SEE ROOF PLAN FOR SIZES 14. KNOCK BOX, RECESSED IN CONCRETE PANEL	15. REVEAL / PAINT TO WRAP END OF PANEL 16. KNOCKOUT FOR MECHANICAL LOUVER, TYP. SIZES & LOCATIONS TO BE COORDINATED WITH MECHANICAL 17. PREFIN. ALUM. CLEARSTORY WINDOW, SEE SHEET A5.301 18. HOLLOW METAL DOOR AND FRAME - PAINTED (SEE DOOR SCHEDULE) 19. KNOCK-OUT IN CONC. PRECAST PANEL, SHOWN DASHED.	XPT-1 - SHERWIN WILLIAMS - SW 7064, PASSIVE XPT-2 - SHERWIN WILLIAMS - SW 7073, NETWORK GRAY XPT-3 - SHERWIN WILLIAMS - SW 7069, IRON ORE XPT-4 - SHERWIN WILLIAMS COLOR, CLAYCO RED CMP-01 - COMPOSITE METAL PANEL, REYNOLBOND - COLORVELO 600 SILVERSMITH	5

