

ALL RIGHTS RESERVED  
NO PART OF THIS DOCUMENT MAY BE REPRODUCED, STORED IN A RETRIEVAL SYSTEM, OR TRANSMITTED IN ANY FORM OR BY ANY MEANS, ELECTRONIC, MECHANICAL, PHOTOCOPYING, RECORDING OR OTHERWISE, WITHOUT THE PRIOR WRITTEN PERMISSION OF ENGINEERING DESIGN CONSULTANTS, INC. ANY UNAUTHORIZED REPRODUCTION OR TRANSMISSION OF THIS DOCUMENT WITHOUT THE PRIOR WRITTEN PERMISSION OF ENGINEERING DESIGN CONSULTANTS, INC. SHALL RENDER THEM INVALID AND VOIDABLE.

- NON-DISTURBANCE TASK NOTES:
1. INSTALL PVC FENCING ALONG EAST, SOUTH & WEST PERIMETER OF TIMBER HARVESTING LIMITS
  2. TIMBER HARVEST LIMITS WILL BE DIVIDED INTO 2 ZONES A & B AS SHOWN
  3. FULL LENGTH TIMBER WILL BE MOVED FROM CUT STACKS WITHIN WORK LIMITS INTO PROCESSING AREAS A & B
  4. WITHIN EACH TIMBER PROCESSING AREA TIMBER WILL BE CUT TO PREDETERMINED LENGTHS AND GRADED AND THEIR TOPS WILL BE CHIPPED.
  5. ALL BRUSH AND DEBRIS WILL BE COLLECTED AND DISPOSED OF WITH ANY SURFACE RUTS PROPERLY CORRECTED WITH MULCH, AND OR WINTER/ANNUAL RYE WITH JUTE BLANKET AS NEEDED.

0 80 200 300  
SCALE: 1" = 60'

ENGINEERING DESIGN CONSULTANTS, INC. SHALL NOT BE RESPONSIBLE FOR CONSTRUCTION MEANS, METHODS, TECHNIQUES, OR PROCEDURES UTILIZED BY THE CONTRACTOR, NOR FOR THE SAFETY OF PUBLIC OR CONTRACTOR'S EMPLOYEES, OR FOR THE FAILURE OF THE CONTRACTOR TO CARRY OUT THE WORK IN ACCORDANCE WITH THE CONTRACT DOCUMENTS.

ENGINEERING DESIGN CONSULTANTS, INC.'S LIABILITY FOR THIS PLAN IS LIMITED TO THE EXTENT OF ITS FEE LESS THIRD PARTY COSTS.

DESIGN BY:	WML		
CHECK BY:	PSB		
APPROVED BY:	PSB		
REV	0	10/01/20	ISSUED FOR REVIEW
DATE			DESCRIPTION



PREPARED BY:



Engineering Design Consultants, Inc.  
32 Turnpike Road  
Southborough, Massachusetts  
ph: (508) 480-0225 fax: (508) 832-5781

PROJECT:

555 HOPPING BROOK ROAD  
HOLLISTON, MASSACHUSETTS  
(MIDDLESEX COUNTY)

TITLE:

TIMBER HARVEST PLAN  
555 HOPPING BROOK ROAD  
HOLLISTON, MASSACHUSETTS

OWNER:

NEW HOPPING BROOK TRUST  
7 EDA AVE.  
CARVER, MA 02330

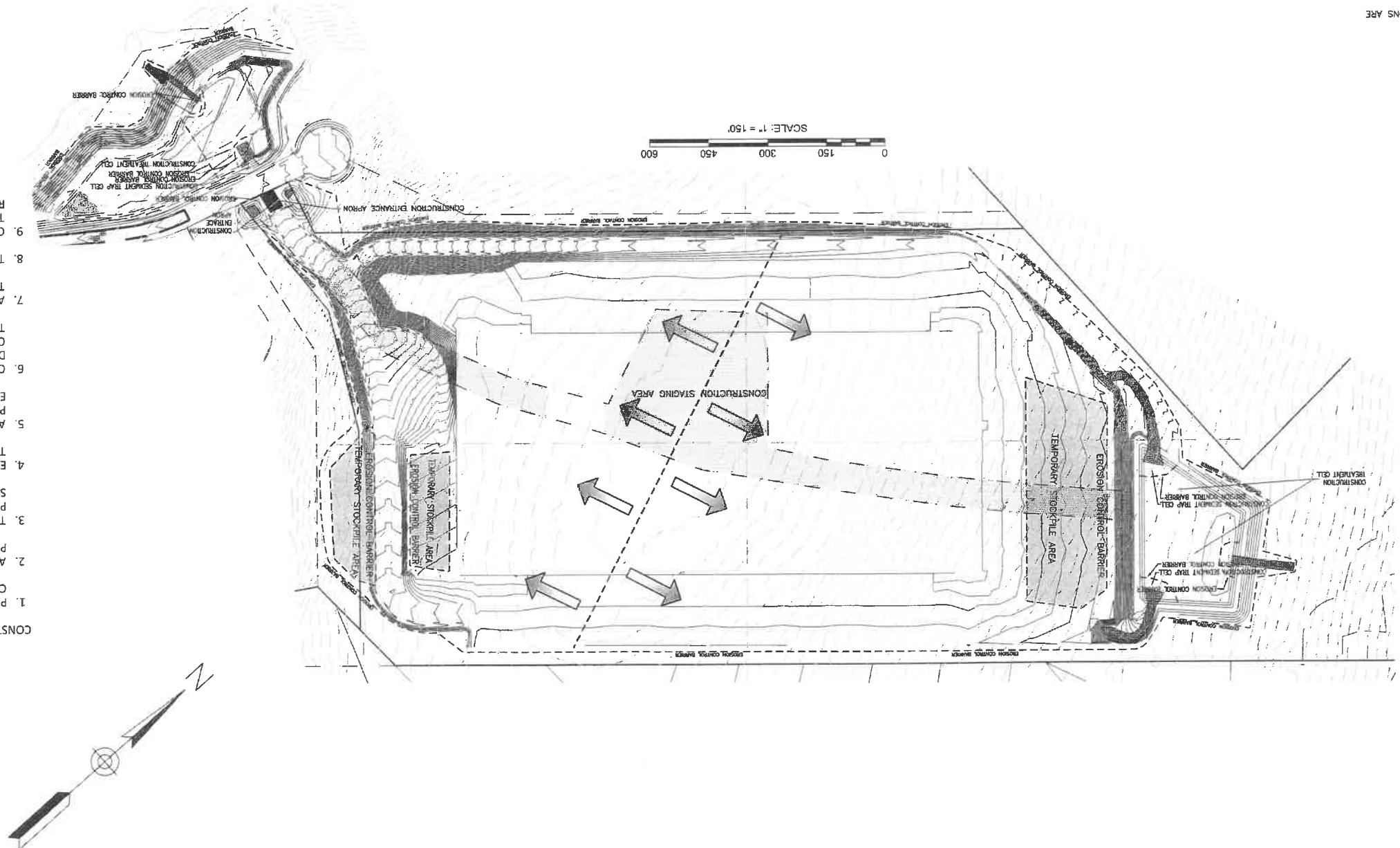

FILE NO.: 3663  
TREE CLEARING/CHIT  
TREE CUTTING 1  
DATE: OCTOBER 1, 2020  
ESTIMATE PLAN NO.:  
1 of 1  
1

DATE	REVIEWER	REMARKS
1/1/19	PSB	OK
2/5/20	PSB	OK
3/2/20	MM	OK

Engineering Design Consultants, Inc.  
32 Turnpike Road  
Southborough, Massachusetts  
Tel: (508) 480-1225 Fax: (508) 882-5781

555 HOPING BROOK ROAD  
HOLLISTON, MASSACHUSETTS  
(MIDDLESEX COUNTY)

555 HOPPING BROOK ROAD  
HOLLISTON, MASSACHUSETTS  
CORG INTEGRATED REAL ESTATE SOLUTIONS  
200 Barr Harbor Drive  
Conshohocken, PA 19248



1. PLACE EROSION CONTROL BARRIER AROUND THE PERIMETER OF THE CONSTRUCTION AREA.
2. AFTER THE TREES ARE CLEARED, EXCAVATION AND GRADING WILL TAKE PLACE FOR THE ENTRANCE DRIVE AND THE BUILDING PAD.
3. TEMPORARY SWALES WILL BE CONSTRUCTED ALONG THE EDGES OF THE PROPOSED DRIVEWAYS AND PARKING AREAS TO DIVERT RUNOFF TO THE SEDIMENT BASINS.
4. EXCAVATION FOR THE BUILDING SLAB WILL BE DONE IN 300 FT. SECTIONS SO THAT ONLY 4 ACRES WILL BE UNDER EXCAVATION AT A TIME.
5. A CRUSHED STONE BASE FOR THE CONCRETE BUILDING SLAB WILL BE PLACED TO STABILIZE THE THE 300 FT SECTION BEFORE THE NEXT SECTION IS EXCAVATED.
6. ONCE THE FOUNDATION STONE IS COMPLETED, THE PARKING LOTS AND DRIVEWAYS WILL BE GRADED. THE UTILITIES ARE CONSTRUCTED AND A BASE COAT OF BITUMINOUS CONCRETE WILL BE PLACED, AND AT THE SAME TIME THE BUILDING SLAB WILL BE CONSTRUCTED.
7. ALL DISTURBED AREAS SHALL BE SEED TO PREVENT EROSION AS NOTED IN THE SWPPP.
8. THE BUILDING CONSTRUCTION TAKES PLACE.
9. ONCE CONSTRUCTION IS COMPLETED AND THE SITE HAS BEEN APPROVED BY THE LOCAL AUTHORITIES, THE EROSION CONTROL BARRIERS SHALL BE REMOVED.

ENGINEERING DESIGN CONSULTANTS, INC. SHALL NOT BE RESPONSIBLE FOR CONSTRUCTION MEANS, METHODS, TECHNIQUES, OR PROCEDURES UTILIZED BY THE CONTRACTOR, NOR FOR THE SAFETY OF PUBLIC OR CONTRACTOR EMPLOYEES, OR FOR THE FAILURE OF THE CONTRACTOR TO CARRY OUT THE WORK IN ACCORDANCE WITH THE CONTRACT DOCUMENTS.

ENGINEERING DESIGN CONSULTANTS, INC.'S LIABILITY FOR THIS PLAN IS LIMITED TO THE EXTENT OF ITS FEE LESS THIRD PARTY COSTS.

DESIGN BY:	WAL	2	3/2/20	PEER REVIEW COMMENTS
CHECK BY:	PSB	1	2/5/20	PEER REVIEW COMMENTS
DATE:	PSB	0	11/16/19	ISSUED FOR REVIEW
REVISION:				
REV 1			DATE	DESCRIPTION



Engineering Design Consultants, Inc.  
32 Turnpike Road  
Southborough, Massachusetts  
ph: (508) 480-0225 fax: (800) 832-5781

PROJECT:

555 HOPPING BROOK ROAD  
HOLLISTON, MASSACHUSETTS  
(MIDDLESEX COUNTY)

TITLE: STORMWATER POLLUTION PREVENTION PLAN  
555 HOPPING BROOK ROAD  
HOLLISTON, MASSACHUSETTS

OWNER/APPLICANT: CRG INTEGRATED REAL ESTATE SOLUTIONS  
200 Barr Harbor Drive  
Conshohocken, PA 19248

FILE NO: 3863 SWPPP  
DATE: NOVEMBER 16, 2019  
DRAWING PLAN NO: 33 - 37  
33

#### OPERATION AND MAINTENANCE PLAN:

MAJOR O&M PLAN TASKS AND DESCRIPTIONS IS OUTLINED AS FOLLOWS:

##### 1. SCHEDULE OF SHORT-TERM OPERATION AND MAINTENANCE (DURING CONSTRUCTION):

- EROSION CONTROL BARRIER: THE EROSION CONTROL BARRIER SHALL BE INSTALLED PRIOR TO COMMENCEMENT OF CONSTRUCTION AND SHALL BE INSPECTED WEEKLY, PRIOR TO STORM EVENTS AND IMMEDIATELY AFTER STORM EVENTS TO ENSURE ITS INTEGRITY. PORTIONS OF THE EROSION CONTROL BARRIER SHALL BE REMEDIED AS NECESSARY TO PREVENT EROSION.
- CONSTRUCTION ENTRANCE APRON: THE CONSTRUCTION ENTRANCE APRON SHALL BE INSTALLED PRIOR TO COMMENCEMENT OF CONSTRUCTION AND SHALL BE INSPECTED WEEKLY. THE CONSTRUCTION ENTRANCE APRON SHALL BE REPLACED WHEN DEBRIS BECOMES NOTICEABLE ON THE EXISTING PAVEMENT SURFACES OPPOSITE THE CONSTRUCTION SIDE OF THE PROPOSED WORK.
- SLOPE STABILIZATION: THE SLOPE STABILIZATION CONTROLS SHALL BE INSTALLED IMMEDIATELY UPON OBTAINING FINAL GRADES AS SHOWN ON THE PROJECT PLANS. AREAS IN FAILURE SHALL BE RE-GRADED TO FINAL GRADE AND STABILIZED AS NECESSARY.
- CONSTRUCTION COMPLETION: THE ENTIRE STORM WATER MANAGEMENT SYSTEM SHALL BE INSPECTED UPON COMPLETION OF CONSTRUCTION. PORTIONS OF THE SYSTEM CONTAINING SEDIMENTATION SHALL BE PROPERLY CLEANED AND THE SILT REMOVED.

##### 2. MAINTENANCE AGREEMENT/SCHEDULE FOR LONG-TERM OPERATION AND MAINTENANCE (POST CONSTRUCTION)

- OWNER OF THE STORMWATER SYSTEM:  
OWNER'S SIGNATURE: \_\_\_\_\_  
DATE: \_\_\_\_\_
- PERSON RESPONSIBLE FOR FINANCING MAINTENANCE AND EMERGENCY REPAIRS: \_\_\_\_\_
- THE ESTIMATED ANNUAL MAINTENANCE COST OF THIS STORMWATER MANAGEMENT SYSTEM IS \$5,000.
- DEEP SUMP CATCH BASINS: INSPECT AND CLEAN AT LEAST 4 TIMES PER YEAR, AT THE END OF FOLIAGE AND SNOW SEASONS. REMOVE SEDIMENT WHEN IT IS HALF WAY UP FROM THE BOTTOM OF THE CATCH BASIN TO THE INVERT OF THE PIPE.
- CONTECH CDS UNIT INSPECTIONS: INSPECTION IS THE KEY TO EFFECTIVE MAINTENANCE AND IS EASILY PERFORMED. POLLUTANT DEPOSITION AND TRANSPORT MAY VARY FROM YEAR TO YEAR, AND REGULAR INSPECTIONS WILL HELP INSURE THAT THE SYSTEM IS CLEANED OUT AT THE APPROPRIATE TIME. AT A MINIMUM, INSPECTIONS SHOULD BE PERFORMED TWICE PER YEAR (I.E. SPRING AND FALL). HOWEVER MORE FREQUENT INSPECTIONS MAY BE NECESSARY WHERE FREQUENT WINTER SANDING OPERATIONS MAY LEAD TO RAPID ACCUMULATIONS. THE VISUAL INSPECTION SHOULD ASCERTAIN THAT THE SYSTEM COMPONENTS ARE IN WORKING ORDER AND THAT THERE ARE NO BLOCKAGES OR OBSTRUCTIONS TO INLET AND/OR SEPARATION SCREEN. THE INSPECTION SHOULD ALSO IDENTIFY ACCUMULATIONS OF HYDROCARBONS, TRASH, AND SEDIMENT IN THE SYSTEM. MEASURING POLLUTANT ACCUMULATION CAN BE DONE WITH A CALIBRATED DIPSTICK, TAPE MEASURE OR OTHER MEASURING INSTRUMENT. IT IS USEFUL AND OFTEN REQUIRED AS PART OF A PERMIT TO KEEP A RECORD OF EACH INSPECTION. (SEE THE INSPECTION AND MAINTENANCE GUIDE PROVIDED BY THE MANUFACTURER, ATTACHED TO THE DRAINAGE CALCULATIONS SUBMITTED WITH THIS PLAN)
- CLEANING OF THE CDS UNITS SHOULD BE DONE WHEN SEDIMENT ACCUMULATES AT A DEPTH OF TWO FEET WITHIN THE UNIT AND SHOULD BE DONE DURING DRY WEATHER CONDITIONS WHEN NO FLOW IS ENTERING THE SYSTEM. CLEANOUT WITH A VACUUM TRUCK IS GENERALLY THE MOST EFFECTIVE AND CONVENIENT METHOD OF EXCAVATING POLLUTANTS FROM THE SYSTEM. SIMPLY REMOVE THE MANHOLE COVERS AND INSERT THE VACUUM HOSE INTO THE SUMP. THE SYSTEM SHOULD BE COMPLETELY DRAINED DOWN AND THE SUMP FULLY EVALUATED OF SEDIMENT. THE AREA OUTSIDE THE SCREEN SHOULD BE PUMPED OUT ALSO IF POLLUTANT BUILD-UP EXISTS IN THIS AREA.
- INFILTRATION BASINS: PERIODIC SMALL-SCALE MAINTENANCE AT REGULAR INTERVALS TO EVALUATE AND REMOVE ANY ACCUMULATED SEDIMENT MAY BE NECESSARY. INSPECT THE INFILTRATION BASINS TWICE ANNUALLY AND WHEN THE STORMWATER DISCHARGES OVER THE HIGH OUTLET AND ANY STORM OVER 2.5 INCHES IN 24 HOURS. INSPECT THE OUTLET STRUCTURES, EMBANKMENT, INFILTRATION AREA, AND THE INFILTRATION BASIN AT LEAST 2 TIMES PER YEAR. REMOVE GRASS CLIPPINGS, TRASH, SEDIMENT, USE DEEP TILLING TO BREAK UP CLOGGED AREAS AND REVEGETATE IMMEDIATELY.
- INSPECTION REPORTS: SEE #12 UNDER, "CONSTRUCTION PERIOD POLLUTION PREVENTION AND EROSION AND SEDIMENTATION CONTROL PLAN," FOR REPORTS. REPORTS SHALL BE MAINTAINED FOR SUBMISSION TO THE DPW FOR A PERIOD OF THREE YEARS.
- ILLEGAL DISCHARGES: ALL ILLEGAL DISCHARGES TO ANY PART OF THE STORMWATER SYSTEM ARE STRICTLY PROHIBITED.  
IF AN ACCIDENTAL SPILL OCCURS (OIL AND/OR CHEMICAL SPILLS, RADIATION EMERGENCIES, AND BIOLOGICAL DISCHARGES) THE NATIONAL RESPONSE CENTER MUST BE CALLED AT 1-800-424-8802.

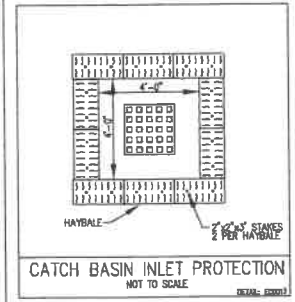
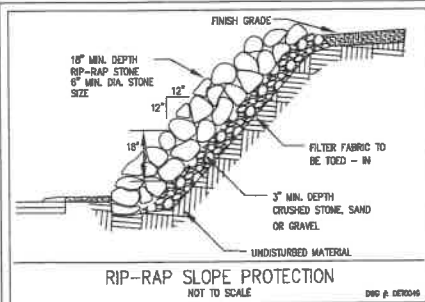
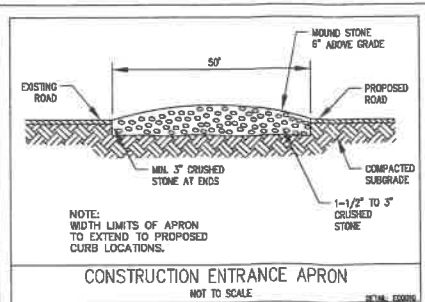
#### CONSTRUCTION PERIOD POLLUTION PREVENTION AND EROSION AND SEDIMENTATION CONTROL PLAN:

- NAME OF PERSON AND ENTITY RESPONSIBLE FOR PLAN COMPLIANCE: \_\_\_\_\_
- PROJECT MANAGER OF 555 HOPPING BROOK ROAD IS THE CONTACT PERSON. CONTACT NUMBER IS \_\_\_\_\_
- CONSTRUCTION PERIOD POLLUTION PREVENTION MEASURES: AS DEFINED WITHIN.
- EROSION AND SEDIMENTATION CONTROL PLAN DRAWINGS: REFER TO PLAN VIEW FOR EROSION CONTROL MEASURE LOCATIONS.
- DETAIL DRAWINGS AND SPECIFICATIONS FOR EROSION CONTROL: REFER TO INDIVIDUAL DETAILS FOR INSTALLATION OF EROSION CONTROL MEASURES.
- VEGETATION PLANNING: THE PROPOSED CONSTRUCTION ACTIVITIES WILL BE PERFORMED WITHIN THE LIMITS OF WORK AREA (STABILIZATION BARRIER & PROPOSED GRADING LIMIT, BEYOND THE LIMIT OF WORK). THE FINAL PROPOSED SURFACE WILL CONSIST OF PAVING, TREES, SHRUBS, MULCH AND GRASSED AREAS (REFER TO SEQUENCING BELOW).
- SITE DEVELOPMENT PLAN: REFER TO PLAN VIEW & APPROVED SITE PLANS.
- CONSTRUCTION SEQUENCING PLAN: THE FOLLOWING CONSTRUCTION SEQUENCE SHALL BE FOLLOWED:
  - EROSION CONTROL PROVISIONS IN PLACE AND INSPECTED PRIOR TO ANY AND ALL CONSTRUCTION.
  - EROSION CONTROL MEASURES AT EXISTING CATCH BASINS IN HOPPING BROOK ROAD.
  - CLEAR AND GRUB WOODED AREAS, REMOVE ALL UNUSABLE MATERIAL FROM SITE.
  - STRIP AND STOCKPILE TOPSOIL. PROVIDE TEMPORARY SEEDING OF STOCKPILE. PLACE EROSION CONTROL BARRIER AROUND STOCKPILE AND PLACE TARPS OVER THE STOCKPILE IF NECESSARY.
  - ROUGH GRADE LOT, REMOVE UNUSABLE MATERIAL FROM SITE.
  - INSTALL ALL UTILITIES & INFILTRATIVE DRAINAGE SYSTEMS, PROTECT THE INFILTRATION AREA FROM STORMWATER RUNOFF. NO SILT OR TOPSOIL IS TO BE DEPOSITED IN THIS AREA, THE INFILTRATION CAPACITY OF THE NATIVE SOIL MUST BE PROTECTED.
  - PERFORM BINDER BASE PAVING OPERATIONS.
  - CONSTRUCTION OF BUILDING.
  - EROSION CONTROL MEASURES AT NEW DRAINAGE INLET UNITS.
  - FINAL GRADING.
  - LOAM AND SEED ALL DISTURBED AREAS & LANDSCAPE.
  - PERFORM FINAL PAVING OPERATIONS.
  - REMOVE EROSION CONTROL PROVISIONS UPON STABILIZATION AND FINAL SITE INSPECTION.
- SEQUENCING OF EROSION AND SEDIMENTATION CONTROLS: EROSION CONTROL PROVISIONS IN PLACE AND INSPECTED PRIOR TO ANY AND ALL CONSTRUCTION.
- OPERATION AND MAINTENANCE OF EROSION AND SEDIMENTATION CONTROLS: THE CONTRACTOR/OPERATOR IS RESPONSIBLE FOR MAINTAINING A STABLE SITE. THE OPERATOR SHALL EMPLOY EROSION AND SEDIMENTATION CONTROLS TO PREVENT EROSION AND SEDIMENT RELEASES BEYOND THE SEDIMENT BARRIER. THE EROSION CONTROL MEASURES INDICATED ARE THE MINIMUM THAT SHOULD BE EMPLOYED. THE CONTRACTOR/OPERATOR SHALL EMPLOY ADDITIONAL CONTROLS AS THE ON-SITE CONSTRUCTION EXPERIENCE DICTATES.
- INSPECTION SCHEDULE:
  - INSPECTIONS SHALL TAKE PLACE AT LEAST ONCE EVERY 7 CALENDAR DAYS OR WITHIN 24 HOURS OF THE END OF A STORM EVENT OF 0.25" OF RAIN OR GREATER.
  - INSPECTION FREQUENCY MAY BE REDUCED TO ONCE A MONTH IF THE ENTIRE SITE IS TEMPORARILY STABILIZED OR RUNOFF IS UNLIKELY DUE TO WINTER CONDITIONS.
  - INSPECTIONS MUST BE CONDUCTED BY A PROPERLY AUTHORIZED QUALIFIED PERSONNEL.

- INSPECTIONS SHALL INCLUDE ALL AREAS OF THE SITE DISTURBED BY CONSTRUCTION ACTIVITIES. INSPECTIONS MUST LOOK FOR EVIDENCE OF POLLUTANTS OR POTENTIAL POLLUTANTS ENTERING THE STORM WATER SYSTEM. SEDIMENT AND EROSION CONTROL MEASURES SHALL BE INSPECTED TO ENSURE PROPER OPERATION. LOCATIONS WHERE VEHICLES ENTER OR EXIT THE SITE MUST BE INSPECTED FOR EVIDENCE OF OFF-SITE SEDIMENT TRACKING.
- MAINTENANCE SCHEDULE: REPORTS SUMMARIZING THE INSPECTIONS SHOULD BE KEPT AS PART OF THIS CONSTRUCTION PERIOD POLLUTION PREVENTION AND EROSION AND SEDIMENTATION CONTROL PLAN. AT A MINIMUM THE INSPECTION REPORTS SHALL INCLUDE:
  - INSPECTION DATE;
  - NAME, TITLE AND QUALIFICATIONS OF THE PERSONNEL MAKING THE INSPECTION;
  - WEATHER CONDITIONS AT THE TIME OF INSPECTION AND SINCE THE PREVIOUS INSPECTION, INCLUDING A BEST ESTIMATE OF THE BEGINNING OF EACH STORM EVENT THAT OCCURRED, DURATION OF EACH STORM EVENT, APPROXIMATE AMOUNT OF RAINFALL FOR EACH STORM EVENT, AND WHETHER ANY DISCHARGES HAVE OCCURRED;
  - DISCHARGES THAT OCCUR AT THE TIME OF INSPECTION;
  - LOCATION OF DISCHARGES OR SEDIMENTATION FROM THE SITE;
  - LOCATION OF "BMPs" THAT NEED TO BE MAINTAINED;
  - LOCATION OF "BMPs" THAT FAILED TO OPERATE AS DESIGNED OR PROVED INADEQUATE FOR A PARTICULAR LOCATION;
  - LOCATIONS WHERE ADDITIONAL "BMPs" ARE NEEDED THAT DID NOT EXIST AT THE TIME OF INSPECTION; AND
  - CORRECTIVE ACTION REQUIRED INCLUDING ANY CHANGES TO THIS PLAN.ALL REPORTS SHALL BE SUBMITTED TO THE TOWN PLANNER ON A MONTHLY BASIS DURING CONSTRUCTION PERIOD, AND MAINTAINED FOR THREE YEARS AFTER FINAL CONSTRUCTION PROJECT CLOSEOUT IS COMPLETE.

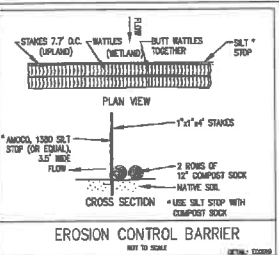
#### CONSTRUCTION PHASING SCHEDULE

- PRE-CONSTRUCTION MEETING
- PLACE EROSION CONTROL BARRIERS (INSPECTING AS NOTED IN THE SWPPP)
- PLACE CONSTRUCTION ENTRANCE APRON
- PLAN SEDIMENT POND LOCATION
- USE PORTION OF EXISTING SOUTHWEST DETENTION BASIN FOR SEDIMENTATION DURING CONSTRUCTION. PUT CONSTRUCTION CELL ONLINE BEFORE GRUBBING AND CLEARING OVERALL SITE LIMITS BEYOND ACCESS TO BASIN - WHEN POSSIBLE STABILIZE, MULCH AND OR HYDROSEED ALL EXPOSED LIMITS
- CONSTRUCT CULVERTS AND DETENTION BASINS AT ENTRANCE DRIVE AND
- PHASING: GRUB TO CONSTRUCTION LIMITS AS LIMITED BY GRADATION AND GRADING OF THE SITE WEEKLY (STABILIZING SLOPES WITH MULCH AND OR HYDROSEED AS CONSTRUCTION PROGRESSES, REMOVING SEDIMENT FROM CONSTRUCTION CELLS)
- ROUGH GRADE BUILDING PAD
- ROUGH GRADE OTHER AREAS
- STOCKPILE MATERIALS INCLUDE EROSION CONTROL BARRIERS AT TOE LIMITS
- RETAINING WALL CONSTRUCTION
- UTILITY CONSTRUCTION
- FINE GRADE BUILDING PAD
- FINE GRADE DRIVES & PAVEMENT BASE COURSE
- BUILDING CONSTRUCTION
- FINE GRADE OTHER AREAS & BIRAP SLOPES
- LANDSCAPE + LOAM & SEED
- FINAL PAVING OPERATIONS
- RAISE RIMS & GRATES TO GRADE
- PAVEMENT STRIPES
- REMOVE SEDIMENT FROM SEDIMENT PONDS & FINALIZE CONSTRUCTION OF DETENTION BASINS. CLEAN STORMWATER PIPES AS NECESSARY
- CLEANUP
- INSPECTIONS & APPROVALS
- REMOVE EROSION CONTROL BARRIERS



- EROSION CONTROL MEASURES (SEE DETAILS) SHALL BE INSTALLED PRIOR TO COMMENCEMENT OF CONSTRUCTION AT THE ENTIRE PERIMETER OF CONSTRUCTION.
- MEASURES SHALL BE TAKEN TO LIMIT THE TRACKING OF MATERIAL FROM THE SITE ONTO HOPPING BROOK ROAD.
- SILT SHALL BE CONTROLLED BY SPRINKLING OR OTHER APPROVED MEASURES AS NECESSARY.
- THROUGHOUT CONSTRUCTION, ALL DISTURBED AREAS SHALL BE LOAMED AND SEEDING AND MULCHED AS SOON AS PRACTICABLE IN ORDER TO AVOID OVERLAND TRANSPORT OF SEDIMENT.
- EROSION CONTROL MEASURES ARE TO BE MAINTAINED THROUGHOUT THE CONSTRUCTION PERIOD AND PARTICULARLY AFTER SIGNIFICANT RAINFALL. DISAPPROPRIATE MAYBALES AND SILT STOP SHALL BE REPLACED AS REQUIRED TO MAINTAIN THE INTEGRITY OF THE BARRIER.
- WITH SLOPES STABILIZED AND FINAL INSPECTION COMPLETE, THE EROSION CONTROL BARRIER SHALL BE REMOVED AND PROPERLY DISPOSED OFF-SITE.

#### SEDIMENTATION & EROSION CONTROL METHODS & PROCEDURES



#### SITE EARTHWORK

331,956 CUBIC YARDS CUT  
322,885 CUBIC YARDS FILL  
9,071 CUBIC YARDS NET CUT

IMPORTED GRAVEL: 31,600± CUBIC YARDS  
ASPHALT: 13,100± CUBIC YARDS  
SEPTIC GRAVEL: 5,000± CUBIC YARDS

#### NOTE:

THE FOLLOWING IS A LIST OF STRUCTURES THAT ARE CONTECH STRUCTURAL UNITS.

DMH#13: CDS 3033-6  
DMH#24: CDS 3033-6  
DMH#27: CDS 2013-5  
DMH#30: CDS 3033-6  
DMH#36: CDS 3033-6  
DMH#40: CDS 3033-6  
DMH#42: CDS 3033-6  
DMH#44: CDS 1213-3

#### NOTE:

UNDERGROUND UTILITY LOCATIONS ARE NOT-GUARANTEED.

IT SHALL BE THE RESPONSIBILITY OF THE CONTRACTOR TO VERIFY LOCATIONS AND ELEVATIONS OF EXISTING UTILITIES PRIOR TO COMMENCEMENT OF ANY CONSTRUCTION.

DIGSAFE IS TO BE NOTIFIED 72 BUSINESS HOURS IN ADVANCE OF CONSTRUCTION. CALL DIGSAFE AT 811

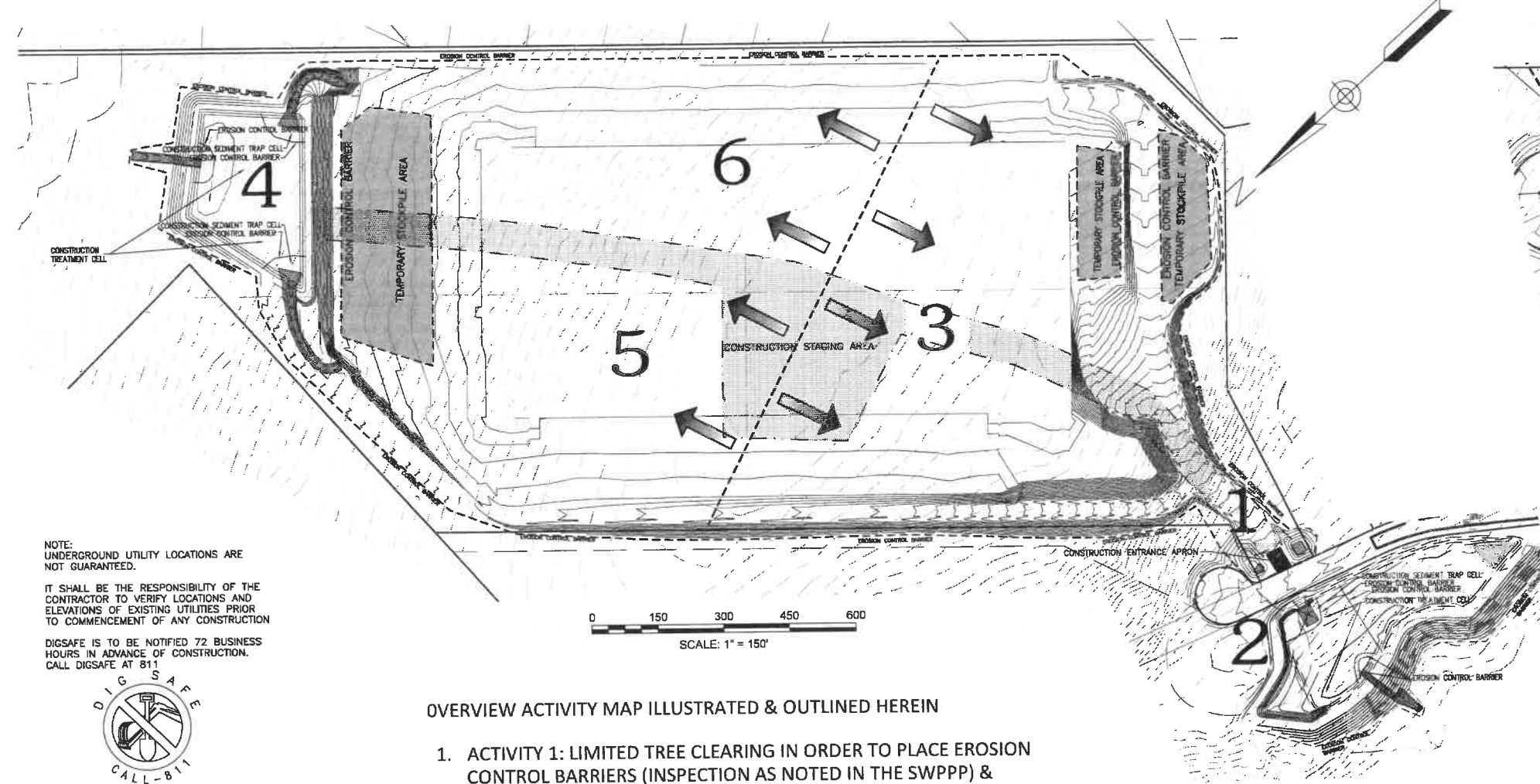


SCALE: 1" = 100'



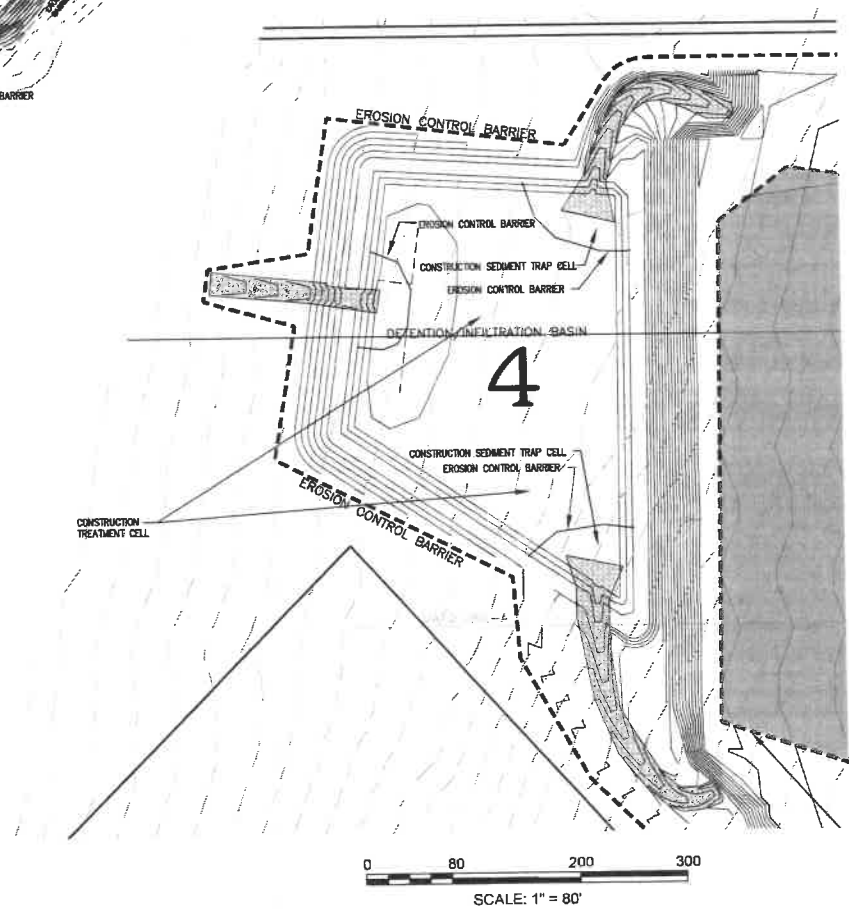
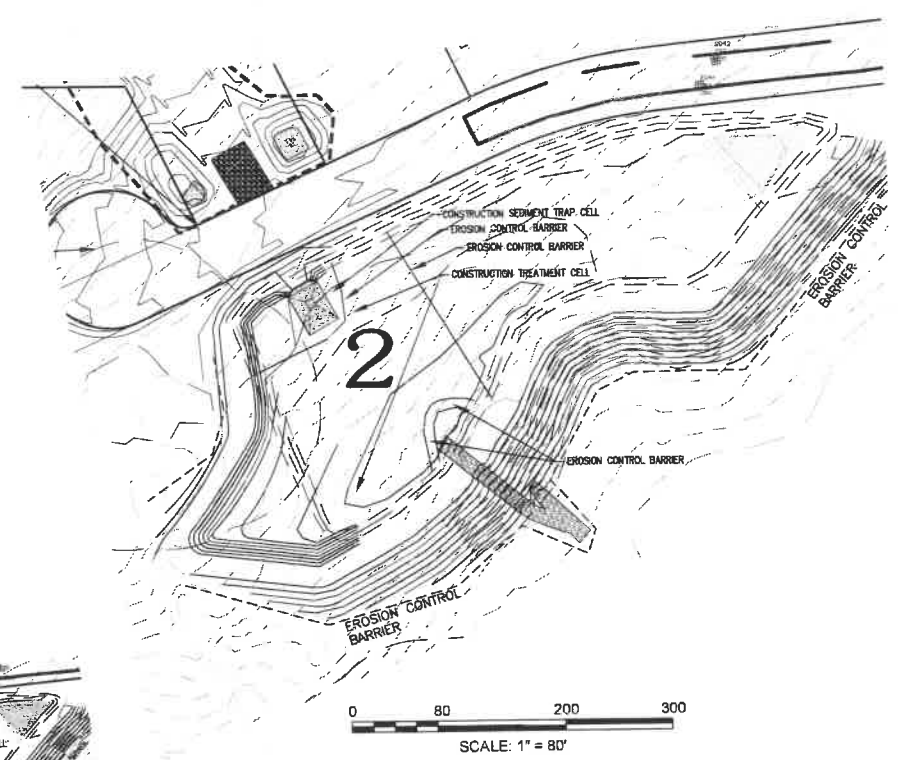
ALL RIGHTS RESERVED

NO PART OF THIS DOCUMENT MAY BE REPRODUCED, COPIED, OR TRANSMITTED IN ANY FORM OR BY ANY MEANS, ELECTRONIC OR MECHANICAL, INCLUDING PHOTOCOPYING, RECORDING, OR BY ANY INFORMATION STORAGE AND RETRIEVAL SYSTEM, WITHOUT THE WRITTEN PERMISSION OF ENGINEERING DESIGN CONSULTANTS, INC. SUCH PERMISSION SHALL BE OBTAINED BY THE USER AND SHALL BE OBTAINED BY THE USER AND SHALL BE OBTAINED BY THE USER.



OVERVIEW ACTIVITY MAP ILLUSTRATED & OUTLINED HEREIN

1. ACTIVITY 1: LIMITED TREE CLEARING IN ORDER TO PLACE EROSION CONTROL BARRIERS (INSPECTION AS NOTED IN THE SWPPP) & CONSTRUCTION ENTRANCE APRON
2. ACTIVITY 2: LIMITED TREE CLEARING INSTALL STRUCTURAL BMP'S AT LEFT & RIGHT ENTRANCE WITH CULVERTS TO BASIN - EXPAND BASIN AND INSTALL ADDITIONAL EROSION CONTROL DEVICES IN ORDER TO ESTABLISH CONSTRUCTION CELL - STABILIZE ALL DISTURBED WORK LIMITS (INSPECTION AS NOTED IN THE SWPPP)
3. ACTIVITY 3: CUT TREES THROUGH TO PHASE I CONSTRUCTION STAGING LIMITS,, GRUB, GRADE & PREPARE ROADWAY BASE AND RESTORE CONSTRUCTION ENTRANCE APRON AS NEEDED (INSPECTION AS NOTED IN THE SWPPP)
4. ACTIVITY 4: CUT TREES THROUGH TO NORTHEAST DETENTION BASIN REQUIRED FOR SEDIMENTATION CONTROL, CUT TREES AND GRUB/CLEAR PATHWAY IN ORDER TO ACCESS BASIN LIMITS, PUT CONSTRUCTION CELL ONLINE STABILIZE, MULCH AND OR HYDROSEED ALL FIXED SLOPE LIMITS.(INSPECTION AS NOTED IN THE SWPPP)
5. ACTIVITY 5: CUT TREES, GRUB AND CLEAR SITE WITHIN ACTIVITY LIMITS (INSPECTION AS NOTED IN THE SWPPP)
6. ACTIVITY 6: PHASING - GRUB AND CLEAR SITE WITHIN ACTIVITY LIMITS (INSPECTION AS NOTED IN THE SWPPP)



ENGINEERING DESIGN CONSULTANTS, INC. SHALL NOT BE RESPONSIBLE FOR CONSTRUCTION MEANS, METHODS, TECHNIQUES, OR PROCEDURES UTILIZED BY THE CONTRACTOR, NOR FOR THE SAFETY OF PUBLIC OR CONTRACTOR'S EMPLOYEES, OR FOR THE FAILURE OF THE CONTRACTOR TO CARRY OUT THE WORK IN ACCORDANCE WITH THE CONTRACT DOCUMENTS.

ENGINEERING DESIGN CONSULTANTS, INC.'S LIABILITY FOR THIS PLAN IS LIMITED TO THE EXTENT OF ITS FEE LESS THIRD PARTY COSTS.

REV	DATE	DESCRIPTION
1	3/2/20	PEER REVIEW COMMENTS
2	2/5/20	PEER REVIEW COMMENTS
3	11/16/19	ISSUED FOR REVIEW



PREPARED BY: Engineering Design Consultants, Inc.  
32 Tumpike Road  
Southborough, Massachusetts  
ph:(508) 480-0225 fax:(800)832-5781

PROJECT: 555 HOPPING BROOK ROAD  
HOLLISTON, MASSACHUSETTS  
(MIDDLESEX COUNTY)

TITLE: STORMWATER POLLUTION PREVENTION PLAN  
555 HOPPING BROOK ROAD  
HOLLISTON, MASSACHUSETTS

DRAWN/APPROVED: CRG INTEGRATED REAL ESTATE SOLUTIONS  
200 Barr Harbor Drive  
Conshohocken, PA 19248

FILE NO: 3583 SWPPP-2  
SWPPP (2)  
DATE: NOVEMBER 16, 2019  
DRAWING PLAN NO: 34  
34