

LOCATION MAP
SCALE: 1" = 2,000'±

SOLAR PV SYSTEM INFORMATION

SYSTEM SIZE: 4,999 KW(AC)
MODULE: (±20,000x) 400-WATT
INVERTER: (1x) 2,500 KW/KVA AND (1x) 2,499 KW/KVA
TRANSFORMER: (2x) 2,750 KVA
RACKING MANUFACTURER: TERRASMAST
RACKING TYPE: PILE DRIVEN AND BALLASTED
RACKING CONFIGURATION: LANDSCAPE 4L
INTER-ROW SPACING: 13 FEET
SYSTEM TILT ANGLE: 25 DEGREES
SYSTEM AZIMUTH ANGLE: 180 DEGREES

ENERGY STORAGE

(16x) 250 KW / 556 KWH DC BATTERIES
4.0 MW / 8,896 MWH TOTAL RATING
2.0 STORAGE HOURS
(16x) 250 KW DOD/DC CONVERTERS

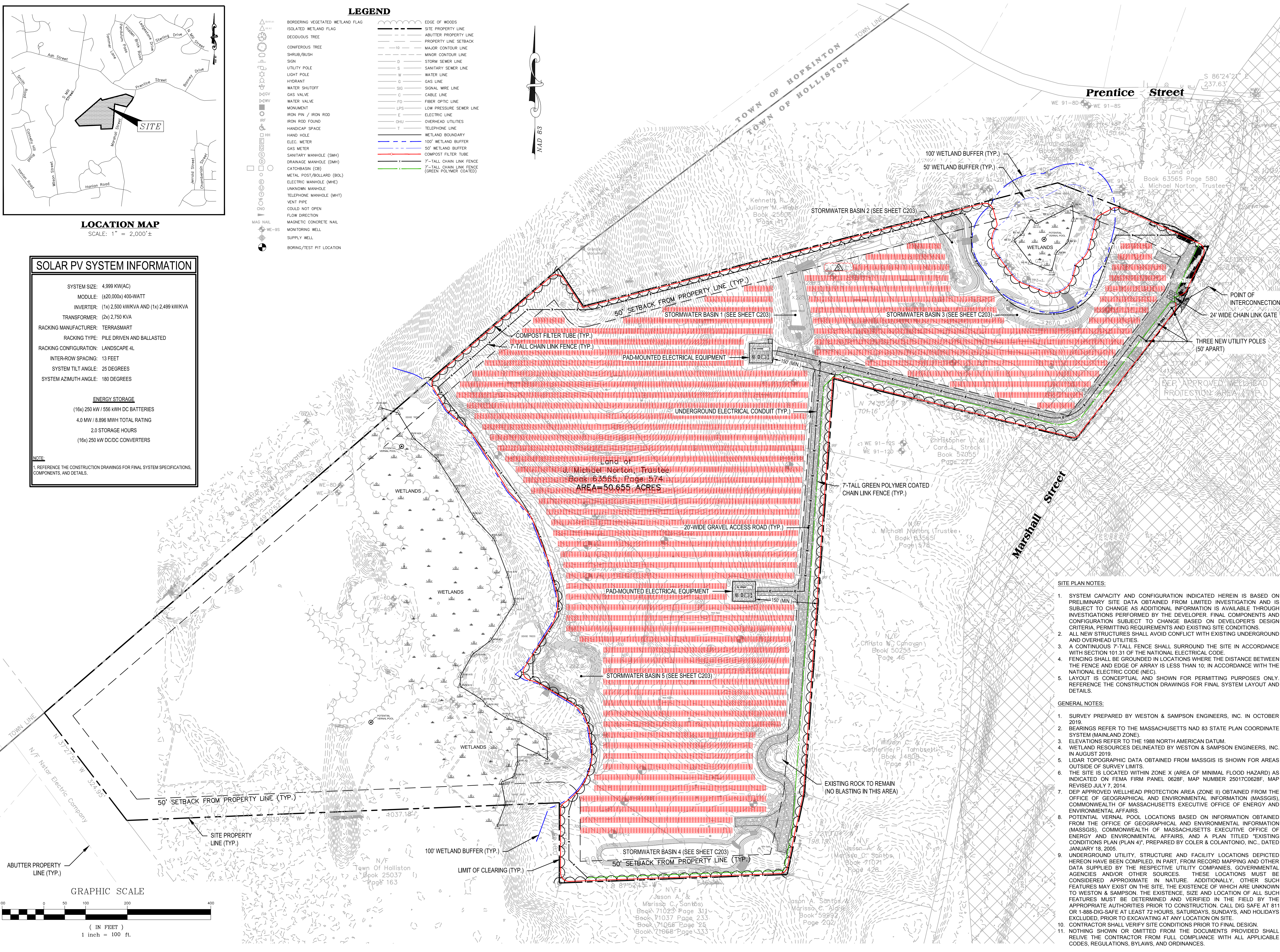
NOTE:

1. REFERENCE THE CONSTRUCTION DRAWINGS FOR FINAL SYSTEM SPECIFICATIONS, COMPONENTS, AND DETAILS.

LEGEND

	BORDERING VEGETATED WETLAND FLAG		EDGE OF WOODS
	ISOLATED WETLAND FLAG		SITE PROPERTY LINE
	DEODIOUS TREE		ADJUTER PROPERTY LINE
	CONIFEROUS TREE		PROPERTY LINE SETBACK
	SHRUB/BUSH		MAJOR CONTOUR LINE
	SIGN		MINOR CONTOUR LINE
	UTILITY POLE		STORM SEWER LINE
	LIGHT POLE		SANITARY SEWER LINE
	HYDRANT		WATER LINE
	WATER SHUTOFF		GAS LINE
	GAS VALVE		SIGNAL WIRE LINE
	WATER VALVE		CABLE LINE
	MONUMENT		FIBER OPTIC LINE
	IRON PIN / IRON ROD		LOW PRESSURE SEWER LINE
	IRON ROD FOUND		ELECTRIC LINE
	HANDICAP SPACE		OVERHEAD UTILITIES
	HAND HOLE		TELEPHONE LINE
	ELEC. METER		WETLAND BOUNDARY
	GAS METER		100' WETLAND BUFFER
	SANITARY MANHOLE (SMH)		50' WETLAND BUFFER
	DRAINAGE MANHOLE (DMH)		COMPOST FILTER TUBE
	CATCH-BASIN (CB)		7-TALL CHAIN LINK FENCE
	METAL POST/ROLLARD (BOL)		7-TALL CHAIN LINK FENCE (GREEN POLYMER COATED)
	ELECTRIC MANHOLE (MHE)		
	UNKNOWN MANHOLE		
	TELEPHONE MANHOLE (MHT)		
	VENT PIPE		
	COULD NOT OPEN		
	FLOW DIRECTION		
	MAGNETIC CONCRETE NAIL		
	MONITORING WELL		
	SUPPLY WELL		
	BORING/TEST PIT LOCATION		

NAD 83



SITE PLAN NOTES:

1. SYSTEM CAPACITY AND CONFIGURATION INDICATED HEREIN IS BASED ON PRELIMINARY SITE DATA OBTAINED FROM LIMITED INVESTIGATION AND IS SUBJECT TO CHANGE AS ADDITIONAL INFORMATION IS AVAILABLE THROUGH INVESTIGATIONS PERFORMED BY THE DEVELOPER. FINAL COMPONENTS AND CONFIGURATION SUBJECT TO CHANGE BASED ON DEVELOPER'S DESIGN CRITERIA, PERMITTING REQUIREMENTS AND EXISTING SITE CONDITIONS.
2. ALL NEW STRUCTURES SHALL AVOID CONFLICT WITH EXISTING UNDERGROUND AND OVERHEAD UTILITIES.
3. A CONTINUOUS 7-TALL FENCE SHALL SURROUND THE SITE IN ACCORDANCE WITH SECTION 101.31 OF THE NATIONAL ELECTRICAL CODE.
4. FENCING SHALL BE GROUNDED IN LOCATIONS WHERE THE DISTANCE BETWEEN THE FENCE AND EDGE OF ARRAY IS LESS THAN 10, IN ACCORDANCE WITH THE NATIONAL ELECTRICAL CODE (NEC).
5. LAYOUT IS CONCEPTUAL AND SHOWN FOR PERMITTING PURPOSES ONLY. REFERENCE THE CONSTRUCTION DRAWINGS FOR FINAL SYSTEM LAYOUT AND DETAILS.

GENERAL NOTES:

1. SURVEY PREPARED BY WESTON & SAMPSON ENGINEERS, INC. IN OCTOBER 2019.
2. BEARINGS REFER TO THE MASSACHUSETTS NAD 83 STATE PLAN COORDINATE SYSTEM (MAINLAND ZONE).
3. ELEVATIONS REFER TO THE 1988 NORTH AMERICAN DATUM.
4. WETLAND RESOURCES DELINEATED BY WESTON & SAMPSON ENGINEERS, INC. IN AUGUST 2019.
5. LIDAR TOPOGRAPHIC DATA OBTAINED FROM MASSGIS IS SHOWN FOR AREAS OUTSIDE OF SURVEY LIMITS.
6. THE SITE IS LOCATED WITHIN ZONE X (AREA OF MINIMAL FLOOD HAZARD) AS INDICATED ON FEMA FIRM PANEL 0628F, MAP NUMBER 25017C0628F, MAP REVISED JULY 7, 2014.
7. DEP APPROVED WELLHEAD PROTECTION AREA (ZONE II) OBTAINED FROM THE OFFICE OF GEOGRAPHICAL AND ENVIRONMENTAL INFORMATION (MASSGIS), COMMONWEALTH OF MASSACHUSETTS EXECUTIVE OFFICE OF ENERGY AND ENVIRONMENTAL AFFAIRS.
8. POTENTIAL VERNAL POOL LOCATIONS BASED ON INFORMATION OBTAINED FROM THE OFFICE OF GEOGRAPHICAL AND ENVIRONMENTAL INFORMATION (MASSGIS), COMMONWEALTH OF MASSACHUSETTS EXECUTIVE OFFICE OF ENERGY AND ENVIRONMENTAL AFFAIRS, AND A PLAN TITLED "EXISTING CONDITIONS PLAN (PLAN 4)", PREPARED BY COLER & COLANTONIO, INC., DATED JANUARY 18, 2005.
9. UNDERGROUND UTILITY, STRUCTURE AND FACILITY LOCATIONS DEPICTED HEREON HAVE BEEN COMPILED, IN PART, FROM RECORD MAPPING AND OTHER DATA SUPPLIED BY THE RESPECTIVE UTILITY COMPANIES, GOVERNMENTAL AGENCIES AND/OR OTHER SOURCES. THESE LOCATIONS MUST BE CONSIDERED APPROXIMATE IN NATURE. ADDITIONALLY, OTHER SUCH FEATURES MAY EXIST ON THE SITE, THE EXISTENCE OF WHICH ARE UNKNOWN TO WESTON & SAMPSON. THE EXISTENCE, SIZE AND LOCATION OF ALL SUCH FEATURES MUST BE DETERMINED AND VERIFIED IN THE FIELD BY THE APPROPRIATE AUTHORITIES PRIOR TO CONSTRUCTION. CALL DIG SAFE AT 811 OR 1-888-DIG-SAFE AT LEAST 72 HOURS, SATURDAYS, SUNDAYS, AND HOLIDAYS EXCLUDED, PRIOR TO EXCAVATING AT ANY LOCATION ON SITE.
10. CONTRACTOR SHALL VERIFY SITE CONDITIONS PRIOR TO FINAL DESIGN.
11. NOTHING SHOWN OR OMITTED FROM THE DOCUMENTS PROVIDED SHALL RELIEVE THE CONTRACTOR FROM FULL COMPLIANCE WITH ALL APPLICABLE CODES, REGULATIONS, BYLAWS, AND ORDINANCES.

Project:

MARSHALL STREET
SOLAR PROJECT

MARSHALL STREET
HOLLISTON, MA 01746

Weston & Sampson

Weston & Sampson Engineers, Inc.
55 Walkers Brook Drive, Suite 100
Reading, MA 01867

978.532.1900 800.SAMPSON
www.westonandsampson.com

Consultants:

Sunrise Investments, LLC
26 Market Square, Portsmouth, NH 03801
207.432.1317

Power Engineers, LLC
37 Fox Den Road, Kingston, MA 02364-2150
508.612.0382

Geosight, Inc.
186 Granite Street, Suite 3A, Manchester, NH 03101
603.314.0820

Terrasart
14590 Global Parkway, Fort Myers, FL 33913
239.362.0211

Walmescapes Design
39 Kingsley Avenue, Haydenville, MA 01039
413.687.1135

Revisions:		
No.	Date	Description
0	10/09/2019	30% DESIGN PLANS
1	10/16/2019	60% DESIGN PLANS
2	11/18/2019	90% DESIGN PLANS
3	12/19/2019	PLANNING, ZONING, AND NOI
4	04/15/2020	PEER REVIEW COMMENTS #2
5	04/29/2020	REMOVE PANELS NEAR WEBB

Seal:

JAMES I. PEARSON
CIVIL
No. 50675
REGISTERED PROFESSIONAL ENGINEER
4/29/2020

COA:

THIS DOCUMENT AND ALL ASSOCIATED DOCUMENTS ARE PREPARED FOR THE EXCLUSIVE USE OF THE CLIENT SOLELY FOR THE SPECIFIC PROJECT LISTED ON THE FACE OF THIS DOCUMENT AND INCORPORATES CALCULATIONS AND MEASUREMENTS AVAILABLE FROM THE CLIENT AT THE TIME OF DRAFTING. THE RECIPIENT OF THIS DOCUMENT SHALL NOT DISTRIBUTE, DISSEMINATE, REPRODUCE OR COPY IN WHOLE OR IN PART, WITHOUT THE WRITTEN PERMISSION OF WESTON & SAMPSON, INC.

Issued For:

PLANNING, ZONING, AND
NOTICE OF INTENT APPROVAL

Scale: AS SHOWN

Date: 04/29/2020

Drawn By: RWG

Reviewed By: SPW

Approved By: JJP

W&S Project No.: 2190903.F
W&S File No.: 090_DESTEC

Drawing Title:

PROPOSED SITE
PLAN

Sheet Number:

C207