



Consultant:

Revision:

Architect of Record:

Drawn: Author

Checked: Checker

Scale:

Key Plan:

Project Name:

CAR WASH @  
HOLLISTON

1650 WASHINGTON ST,  
HOLLISTON

Sheet Name:

BUILDING VIEWS

Project Number:

2023-002

Issue Date:

01/30/24

Sheet Number:

T0.01.





Consultant:

Revision:

Architect of Record:

Drawn: Author

Checked: Checker

Scale:

Key Plan:

Project Name:

CAR WASH @  
HOLLISTON

1650 WASHINGTON ST,  
HOLLISTON

Sheet Name:

BUILDING VIEWS

Project Number:

2023-002

Issue Date:

01/30/24

Sheet Number:

T0.02.



Consultant:

Revision:

Architect of Record:

Drawn: Author

Checked: Checker

Scale: 3/16" = 1'-0"

Key Plan:

Project Name:

CAR WASH @  
HOLLISTON

1650 WASHINGTON ST,  
HOLLISTON

Sheet Name:

EXTERIOR ELEVATIONS

Project Number:

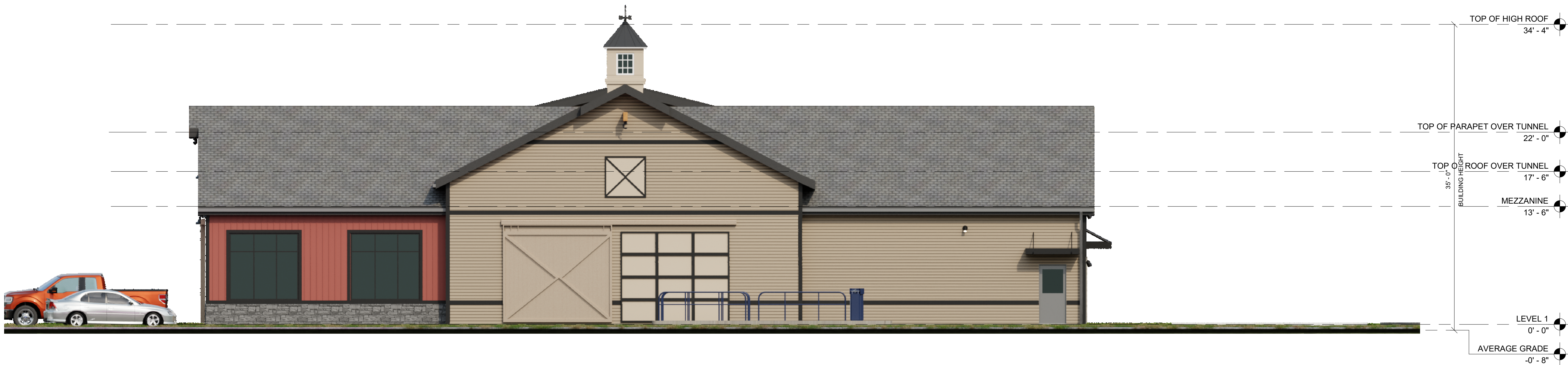
2023-002

Issue Date:

01/30/24

Sheet Number:

A1.03.



11 SIDE ELEVATION - 01  
Scale: 3/16" = 1'-0"



10 FRONT ELEVATION  
Scale: 3/16" = 1'-0"



Consultant:

Revision:

Architect of Record:

Drawn: Author

Checked: Checker

Scale: 3/16" = 1'-0"

Key Plan:

Project Name:

CAR WASH @  
HOLLISTON

1650 WASHINGTON ST,  
HOLLISTON

Sheet Name:

EXTERIOR ELEVATIONS

Project Number:

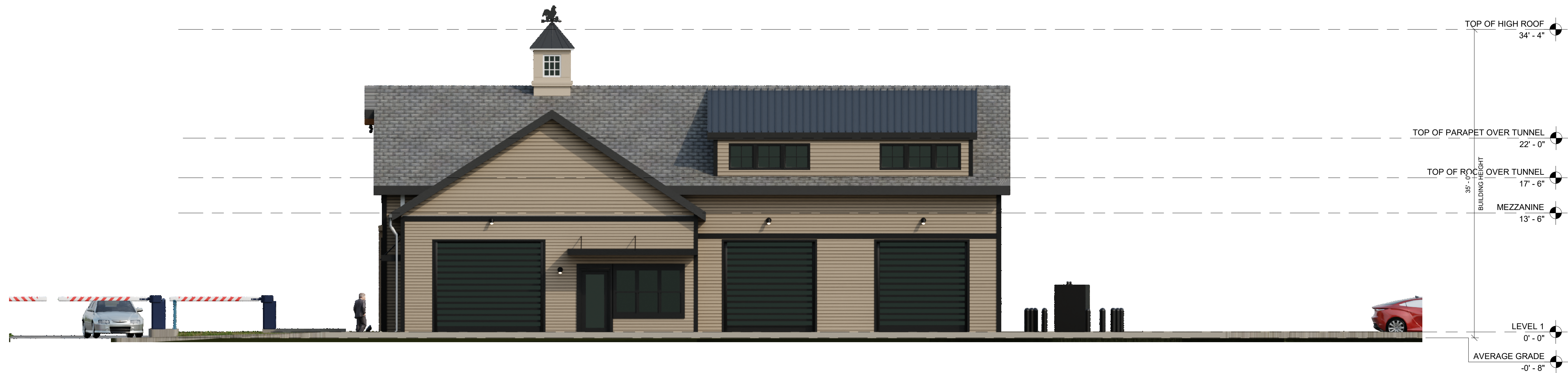
2023-002

Issue Date:

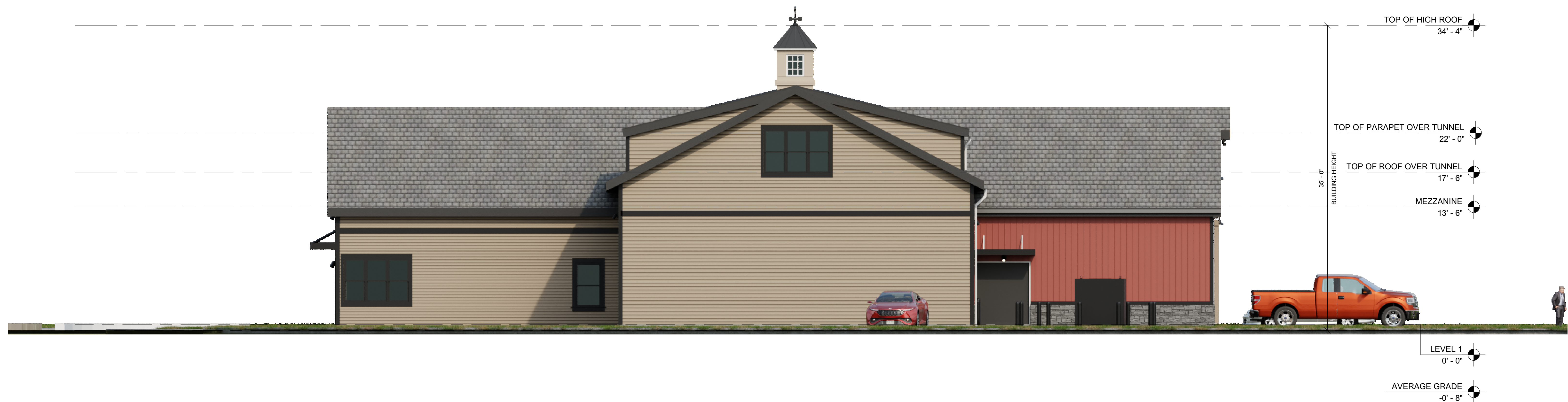
01/30/24

Sheet Number:

A1.04.

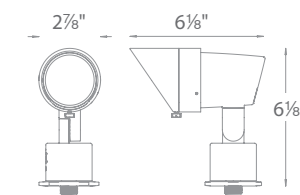


11 REAR ELEVATION  
Scale: 3/16" = 1'-0"



10 SIDE ELEVATION  
Scale: 3/16" = 1'-0"





### PRODUCT DESCRIPTION

Landscape accent luminaire. Simple to retrofit existing line voltage systems or coordinate well with a new commercial landscape installation.

## FEATURES

- Adjustable and lockable beam angle
- Integral dimmer
- IP66 rated, Protected against high-pressure water jets
- Includes a detachable shroud
- Solid diecast brass or corrosion resistant aluminum
- Factory sealed water tight fixtures
- Detachable shroud, 6' lead wire and wire nuts included
- Maintains constant lumen output against voltage drop
- UL 1598 Listed
- Not suitable to use with external dimmers

## SPECIFICATIONS

<b>Input:</b>	110V - 120VAC
<b>Power:</b>	3.5W to 14.5W
<b>Brightness:</b>	100 lm to 900 lm
<b>Beam Angle:</b>	15° to 60°
<b>CRI:</b>	85
<b>Rated Life:</b>	45,000 hours

## ORDERING NUMBER

Color Temp		Finish	
<b>5012</b>	<i>Accent 120V</i>	<b>30</b>	<b>3000K</b>
		<b>BK</b>	<i>Black on Aluminum</i>
		<b>BZ</b>	<i>Bronze on Aluminum</i>
		<b>BBR</b>	<i>Bronze on Brass</i>








5012-30\_\_\_\_\_

Example: **5012-30BBR**

**ACCENT 120V**  
5012

**WAC**  
LANDSCAPE LIGHTING

## Accessories

Power Stake		M6000-STAKE	PVC	Easy wiring accessory designed for 12V & 120V products Eliminates the need for a separate Junction box		
Accent Snoot		S010-SNOOT-BK S010-SNOOT-BZ S010-SNOOT-BBR	Black on Aluminum Bronze on Aluminum Bronze on Brass	Shields lamp and reduces glare		
6" Long Shroud		S010-LSHR-BK S010-LSHR-BZ S010-LSHR-BBR	Black on Aluminum Bronze on Aluminum Bronze on Brass	Reduce glare. Ideal for downlighting application		
Gutter Mount Bracket		5000-GM-BZ 5000-GM-BK	Stainless Steel	Stainless Steel universal mounting bracket for gutter mounting fixture		
Tree Mount Junction Box		5000-TCP-BZ 5000-TCP-BK	Bronze on Aluminum Black on Aluminum	Bronze on Aluminum box with Stainless steel mounting screws Two 1/2" NPT threaded holes		
Optics		LENS-20-AMB LENS-20-GRN LENS-20-RED	Amber Green Red	LENS-20-BLU LENS-20-FR LENS-20-SPR	Blue Frosted Spread	Enhances saturation of florals and foliage
Extension Rods		5000-X04-BZ 5000-X04-BK 5000-X08-BZ 5000-X08-BK 5000-X12-BZ 5000-X12-BK	4 in 4 in 8 in 8 in 12 in 12 in	5000-X18-BZ 5000-X18-BK 5000-X24-BZ 5000-X24-BK	18 in 18 in 24 in 24 in	Extends distance between Accent light and Surface Mount Canopy, Stake, or Tree Mount box
Rod L-Coupler		5000-LCO-BZ	Bronze			

SCALE : 0' - 3/4" : 1'-0"

# CARWASH SIGN -DETAILS

DATE : 01/30/2024





SCALE : 0' - 1/2" : 1'-0"

CARWASH SIGN  
-DETAILS

DATE : 01/30/2024