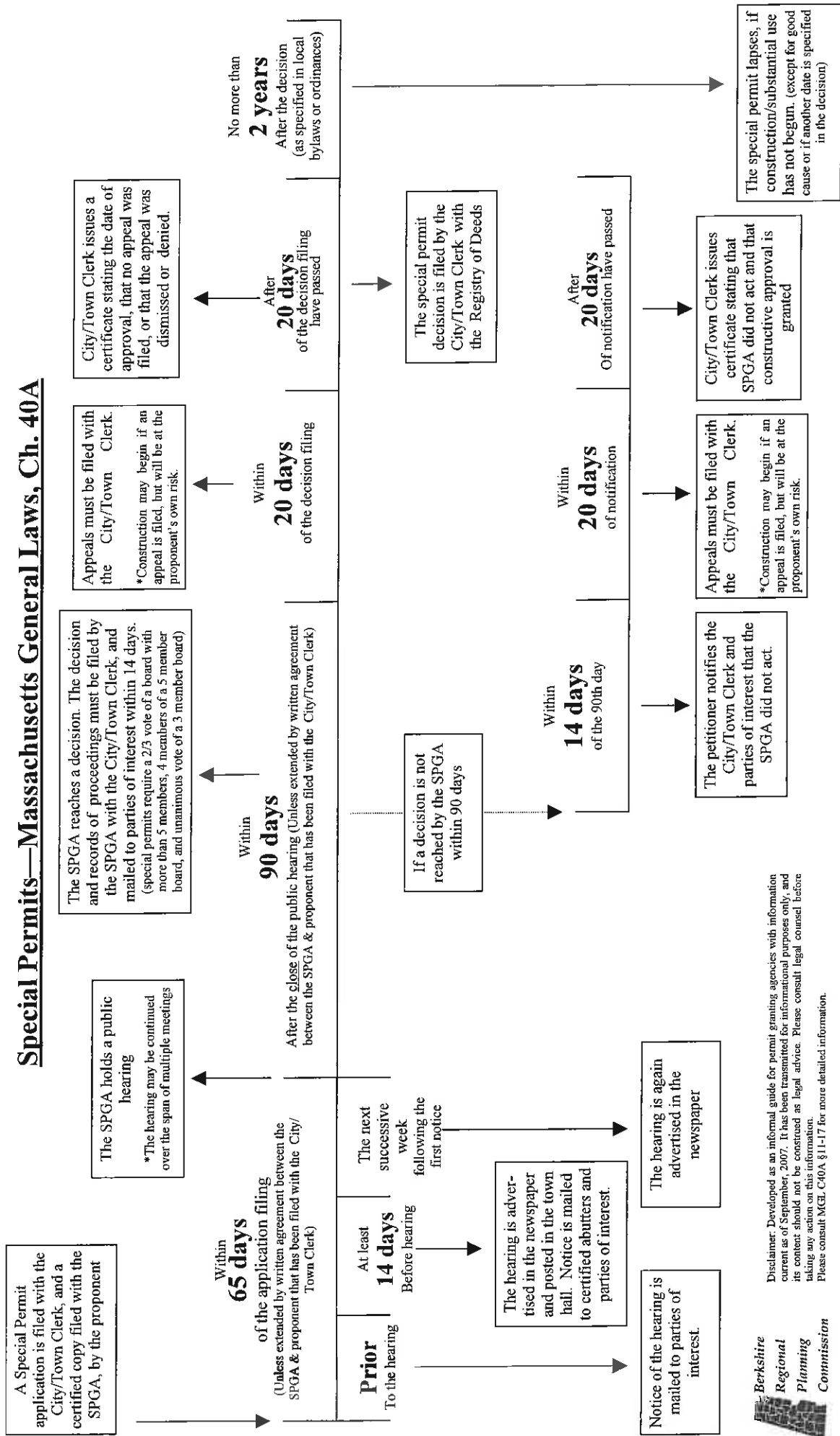


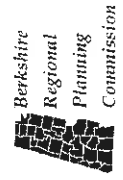
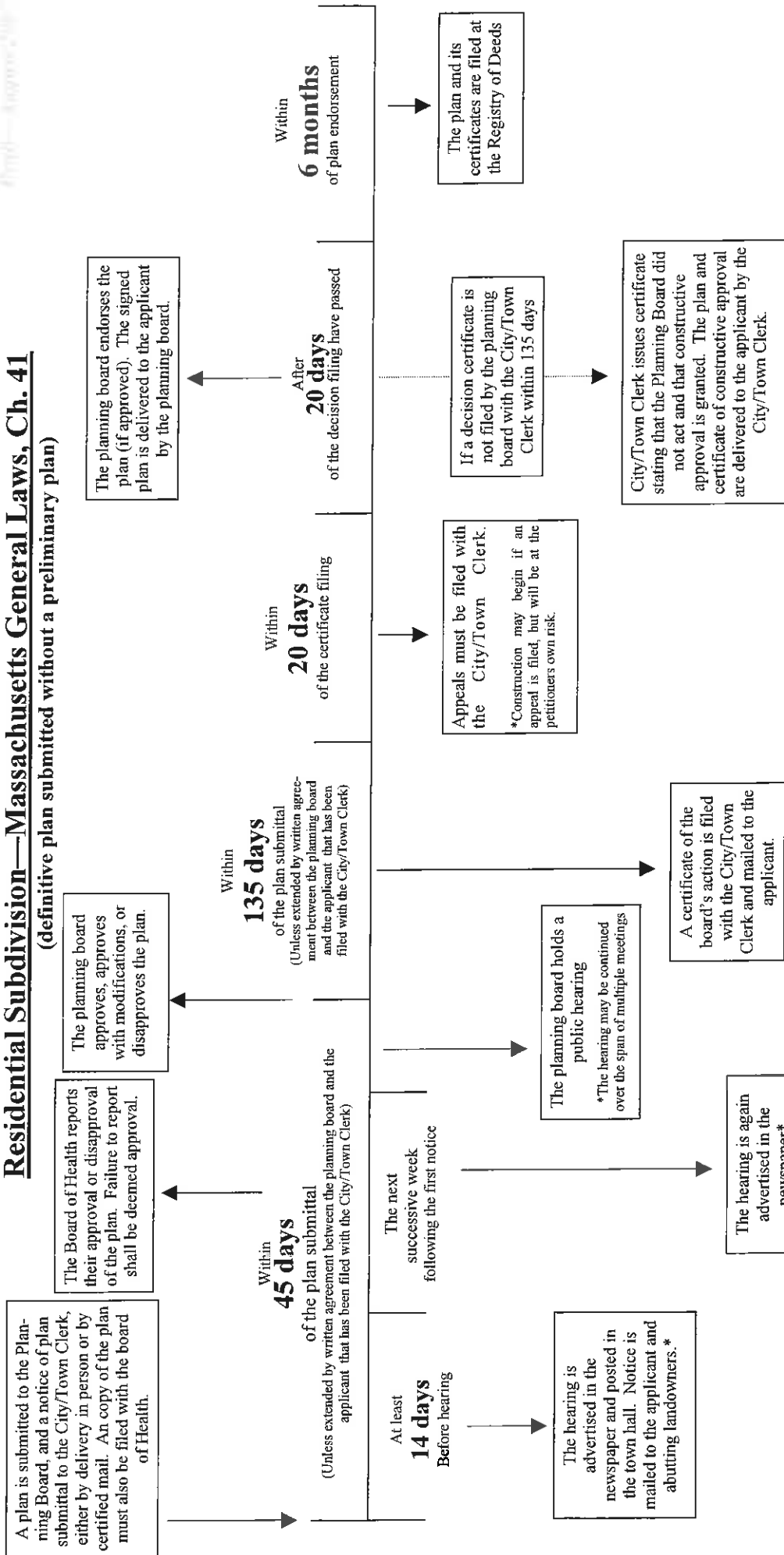
# Special Permits—Massachusetts General Laws, Ch. 40A



Disclaimer: Developed as an informal guide for permit granting agencies with information current as of September, 2007. It has been transmitted for informational purposes only, and its content should not be construed as legal advice. Please consult legal counsel before taking any action on this information. Please consult MGL Ch. 40A §11-17 for more detailed information.



# Residential Subdivision—Massachusetts General Laws, Ch. 41 (definitive plan submitted without a preliminary plan)



Developed as an informal guide for permit granting agencies with information current as of August, 2007. It is the work of its authors only and does not reflect the opinion of the Attorney General. Please consult MGL C41 for more detailed information.

\* = at the expense of the applicant.