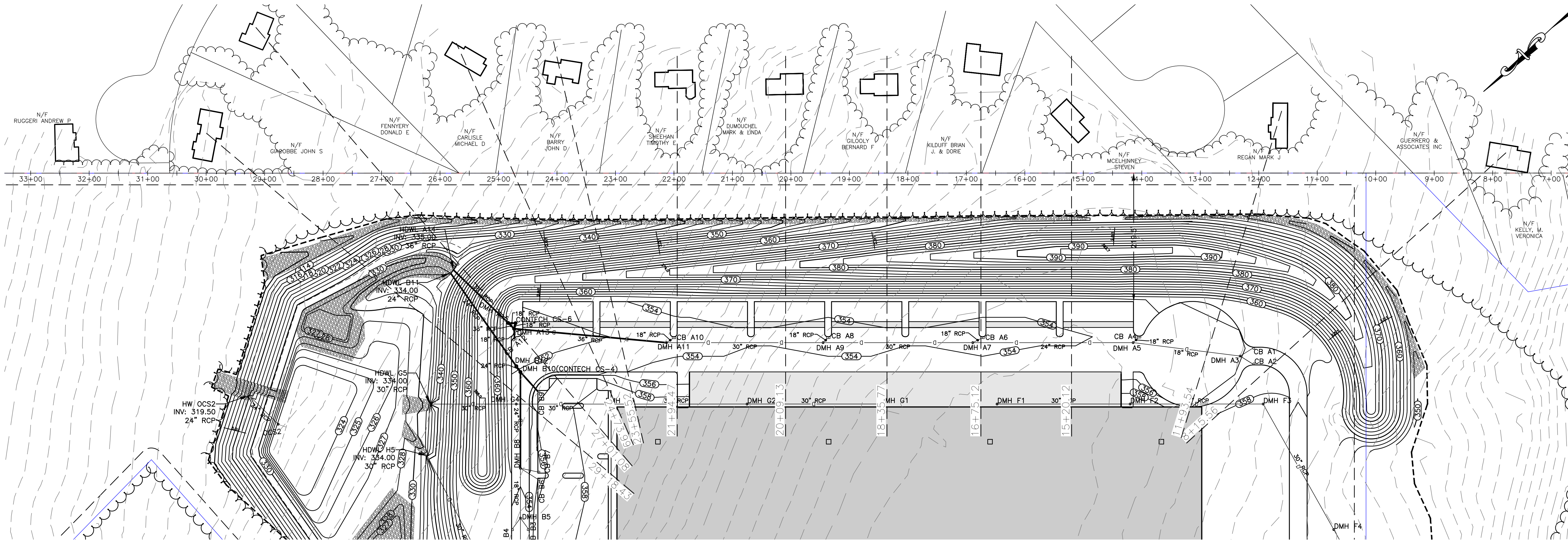


ALL RIGHTS RESERVED  
NO PART OF THIS DOCUMENT MAY BE REPRODUCED, STORED IN A RETRIEVAL SYSTEM, OR TRANSMITTED IN ANY FORM OR BY ANY MEANS, ELECTRONIC, MECHANICAL, PHOTOCOPYING, RECORDING OR OTHERWISE, WITHOUT THE PRIOR WRITTEN PERMISSION OF ENGINEERING DESIGN CONSULTANTS, INC. ANY VIOLATION OF THIS STATEMENT OF THE DESIGNER'S RESPONSIBILITIES SHALL BE CONSIDERED A VIOLATION OF THE PROFESSIONAL ENGINEERING ACT AND IS UNLAWFUL.



0 80 200 300  
SCALE: 1" = 80'

**Bufftech®**

CERTAINTÉED CORPORATION FENCE  
DECK AND RAIL DIVISION  
231 SHIP CANAL PARKWAY  
BUFFALO, NY 14216  
TOLL FREE: 1-800-333-0589  
PHONE: (716) 823-3023  
FAX: (716) 823-2843  
www.certainteed.com

☒ SELECT DESIRED SIZE:  
☐ 8' HEIGHT X 8' WIDE (TWO STACKED PANELS)

☒ SELECT DESIRED COLOR:  
☐ BEIGE GRANITE  
☐ BROWN GRANITE  
☐ DARK BROWN GRANITE  
☐ DESERT GRANITE  
☐ GRAY GRANITE  
☐ BLACK GRANITE

GOOD NEIGHBOR FENCE -  
SAME STONE PATTERN  
ON BOTH SIDES

ISOMETRIC VIEW

ELEVATION VIEW

MINIMUM TOP OF POST  
TO GROUND LEVEL

POST HEIGHT

POST

GROUND LEVEL

5' X 6' POST

**SPECIFICATIONS:**  
FENCE: MADE WITH LINEAR LOW DENSITY  
POLYETHYLENE (LLDPE) (LLDPE)  
ACTUAL PANEL DIMENSIONS: 6' X 8' X 0.25" THICK  
PANEL WEIGHT: 60 LBS  
TOLERANCES: ± 5"

**MANUFACTURER NOTES:**  
1. SEE PATENTS 7,476,797 / 7,556,174 FOREIGN PATENTS PENDING.  
2. DO NOT SCALE DRAWING.  
3. THIS DRAWING IS INTENDED FOR USE BY ARCHITECTS, ENGINEERS, CONTRACTORS, CONSULTANTS AND DESIGN PROFESSIONALS.  
4. FOR PLANNING PURPOSES ONLY. THIS DRAWING MAY NOT BE USED FOR CONSTRUCTION.  
5. ALL INFORMATION CONTAINED HEREIN WAS CURRENT AT THE TIME OF DEVELOPMENT BUT MUST BE REVIEWED AND APPROVED BY THE PRODUCT MANUFACTURER TO BE CONSIDERED ACCURATE.  
6. CONTRACTOR NOTE: FOR PRODUCT AND COMPANY INFORMATION VISIT [www.CADetals.com/info](http://www.CADetals.com/info) AND ENTER REFERENCE NUMBER 030103.

**PRIVACY FENCING**  
(BUFFTECH ALLEGRENT FENCE PANEL - 6' H X 8' W) (TWO STACKED PANELS)

THIS SET  
PROTECTED BY COPYRIGHT ©2010 CADETALS.COM, LTD.

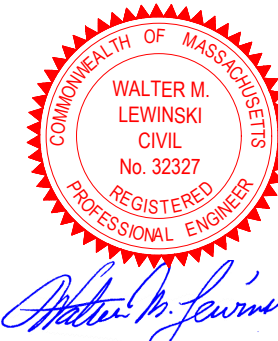
REVISION DATE: 04/03/2010  
CADetals.com

ENGINEERING DESIGN CONSULTANTS, INC. SHALL NOT BE RESPONSIBLE FOR CONSTRUCTION MEANS, METHODS, TECHNIQUES, OR PROCEDURES UTILIZED BY THE CONTRACTOR, NOR FOR THE SAFETY OF PUBLIC OR CONTRACTORS EMPLOYEES; OR FOR THE FAILURE OF THE CONTRACTOR TO CARRY OUT THE WORK IN ACCORDANCE WITH THE CONTRACT DOCUMENTS.

ENGINEERING DESIGN CONSULTANTS, INC.'S LIABILITY FOR THIS PLAN IS LIMITED TO THE EXTENT OF ITS FEE LESS THIRD PARTY COSTS.

DRAWN BY: WML  
CHECKED BY: PSB  
APPROVED BY: PSB

REVISIONS		
REV	DATE	DESCRIPTION
0	1/24/23	ISSUED FOR DISCUSSION



PREPARED BY:  
**Engineering Design Consultants, Inc.**  
32 Turnpike Road  
Southborough, Massachusetts  
ph: (508) 480-0225 fax: (800) 832-5781

PROJECT:  
**555 HOPPING BROOK ROAD  
HOLLISTON, MASSACHUSETTS  
(MIDDLESEX COUNTY)**

TITLE:  
**SECTIONS  
555 HOPPING BROOK ROAD  
HOLLISTON, MASSACHUSETTS**

OWNER/APPLICANT:  
**CRG INTEGRATED REAL ESTATE SOLUTIONS  
35 E. WACKER DRIVE  
CHICAGO, ILLINOIS 60601**

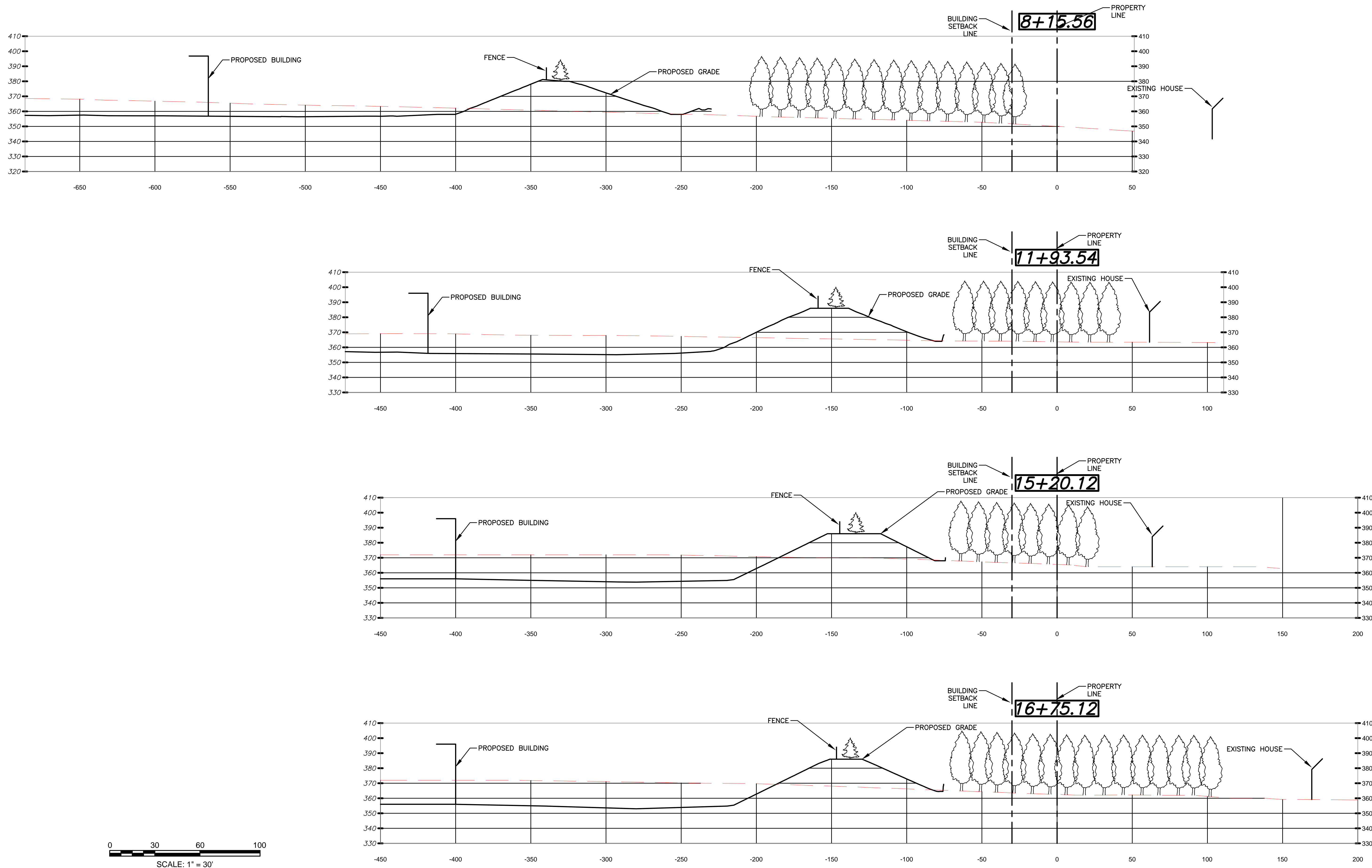
FILE NO: 3780 ABUTTER CROSS  
SECTIONS

DATE: JANUARY 24, 2023

DEFINITE PLAN NO.:  
1 of 4  
**1**



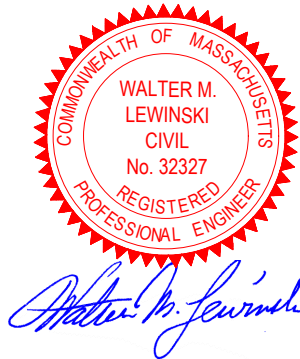
ALL RIGHTS RESERVED  
NO PART OF THIS DOCUMENT MAY BE REPRODUCED, STORED IN A RETRIEVAL SYSTEM, OR TRANSMITTED IN ANY FORM OR BY ANY MEANS, ELECTRONIC, MECHANICAL, PHOTO COPYING, RECORDING OR OTHERWISE, WITHOUT THE PRIOR WRITTEN PERMISSION OF ENGINEERING DESIGN CONSULTANTS, INC. ANY VIOLATION OF THIS STATEMENT OF THE DESIGN PROFESSIONAL ENGINEERING DESIGN CONSULTANTS, INC. SHALL BE SUBJECT TO THE FOLLOWING: \$10,000 PER PAGE.



ENGINEERING DESIGN CONSULTANTS, INC. SHALL NOT BE RESPONSIBLE FOR CONSTRUCTION MEANS, METHODS, TECHNIQUES, OR PROCEDURES UTILIZED BY THE CONTRACTOR, NOR FOR THE SAFETY OF PUBLIC OR CONTRACTORS EMPLOYEES; OR FOR THE FAILURE OF THE CONTRACTOR TO CARRY OUT THE WORK IN ACCORDANCE WITH THE CONTRACT DOCUMENTS.

ENGINEERING DESIGN CONSULTANTS, INC.'S LIABILITY FOR THIS PLAN IS LIMITED TO THE EXTENT OF ITS FEE LESS THIRD PARTY COSTS.

DESIGN BY:	WML
CHECK BY:	PSB
APPROVED BY:	PSB
REV	0
DATE	1/24/23
DESCRIPTION	ISSUED FOR DISCUSSION



PREPARED BY:  
**Engineering Design Consultants, Inc.**  
32 Turnpike Road  
Southborough, Massachusetts  
ph: (508) 480-0225 fax: (800) 832-5781

PROJECT:  
555 HOPPING BROOK ROAD  
HOLLISTON, MASSACHUSETTS  
(MIDDLESEX COUNTY)

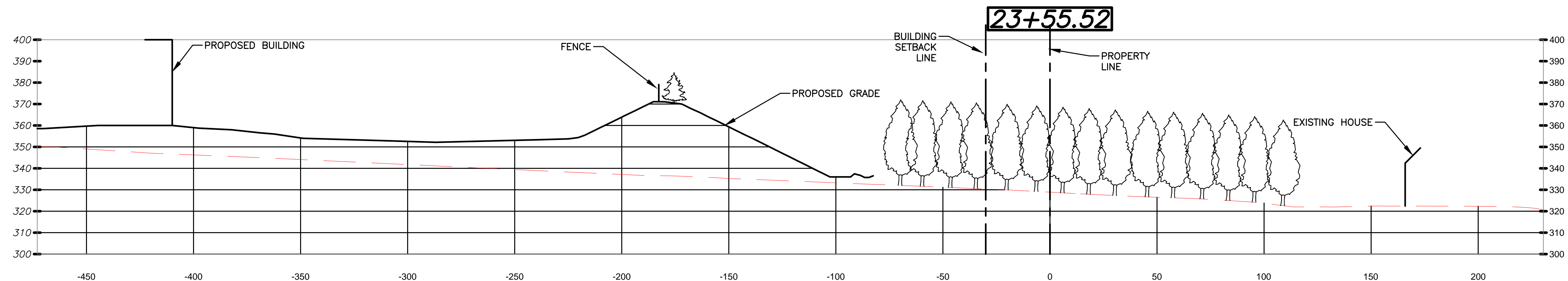
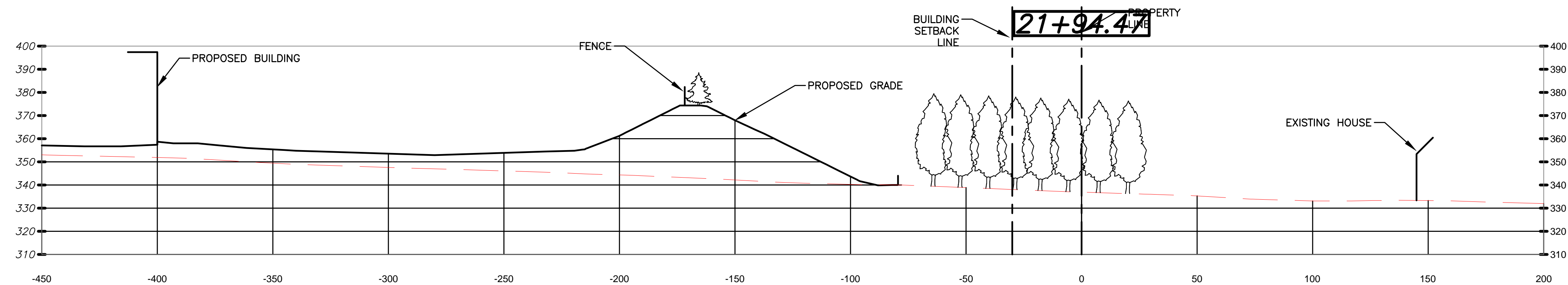
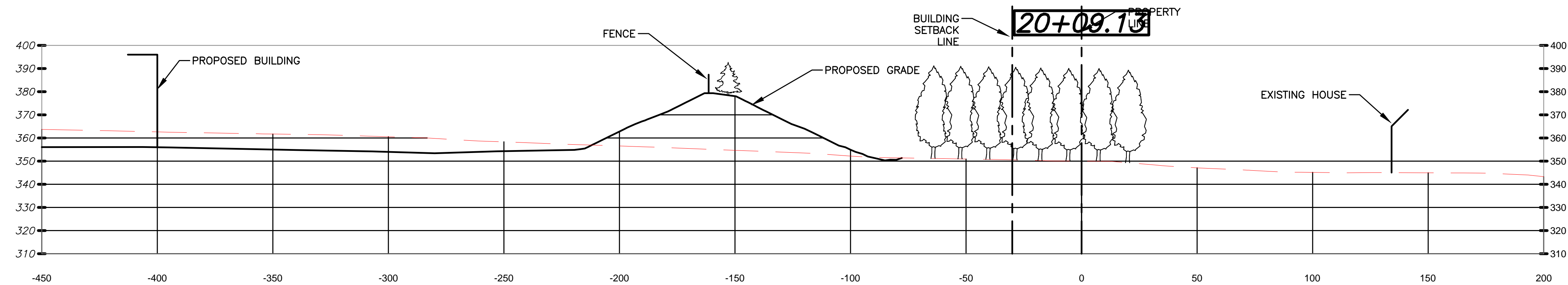
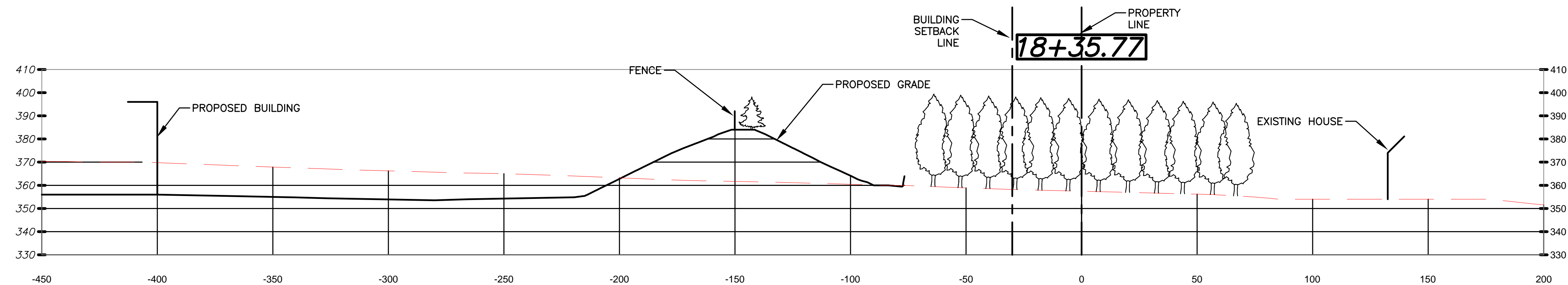
TITLE:  
**SECTIONS**  
555 HOPPING BROOK ROAD  
HOLLISTON, MASSACHUSETTS

OWNER/APPLICANT:  
CRG INTEGRATED REAL ESTATE SOLUTIONS  
35 E. WACKER DRIVE  
CHICAGO, ILLINOIS 60601

FILE NO.: 3780 ABUTTER CROSS SECTIONS  
DATE: JANUARY 24, 2023  
DEFINITE PLAN NO.: 2 OF 4  
2

ALL RIGHTS RESERVED  
NO PART OF THIS DOCUMENT MAY BE REPRODUCED, STORED IN A RETRIEVAL SYSTEM, OR TRANSMITTED IN ANY FORM OR BY ANY MEANS, ELECTRONIC, MECHANICAL, PHOTOCOPYING, RECORDING OR OTHERWISE, WITHOUT THE PRIOR WRITTEN PERMISSION OF ENGINEERING DESIGN CONSULTANTS, INC. ANY VIOLATION OF THIS STATEMENT OF THE DESIGN PROFESSIONAL ENGINEERING DESIGN CONSULTANTS, INC. SHALL BE PENALIZED AND PUNISHABLE.

0 30 60 100  
SCALE: 1" = 30'



ENGINEERING DESIGN CONSULTANTS, INC. SHALL NOT BE RESPONSIBLE FOR CONSTRUCTION MEANS, METHODS, TECHNIQUES, OR PROCEDURES UTILIZED BY THE CONTRACTOR, NOR FOR THE SAFETY OF PUBLIC OR CONTRACTORS EMPLOYEES; OR FOR THE FAILURE OF THE CONTRACTOR TO CARRY OUT THE WORK IN ACCORDANCE WITH THE CONTRACT DOCUMENTS.

ENGINEERING DESIGN CONSULTANTS, INC.'S LIABILITY FOR THIS PLAN IS LIMITED TO THE EXTENT OF ITS FEE LESS THIRD PARTY COSTS.

DRAWN BY: WML  
CHECKED BY: PSB  
APPROVED BY: PSB

REVISIONS:  
0 1/24/23 ISSUED FOR DISCUSSION  
DATE DESCRIPTION



PREPARED BY:  
Engineering Design Consultants, Inc.  
32 Turnpike Road  
Southborough, Massachusetts  
ph:(508) 480-0225 fax:(800)832-5781

PROJECT:  
555 HOPPING BROOK ROAD  
HOLLISTON, MASSACHUSETTS  
(MIDDLESEX COUNTY)

TITLE:  
SECTIONS  
555 HOPPING BROOK ROAD  
HOLLISTON, MASSACHUSETTS  
OWNER/APPLICANT:  
CRG INTEGRATED REAL ESTATE SOLUTIONS  
35 E. WACKER DRIVE  
CHICAGO, ILLINOIS 60601

FILE NO.: 3780 ABUTTER CROSS SECTIONS

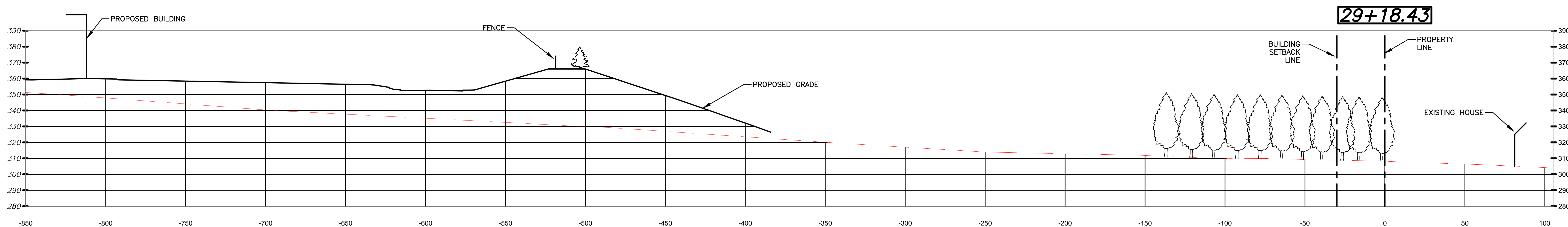
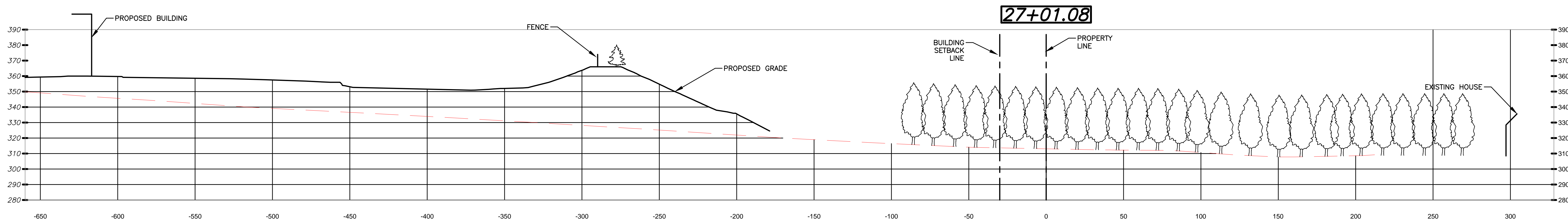
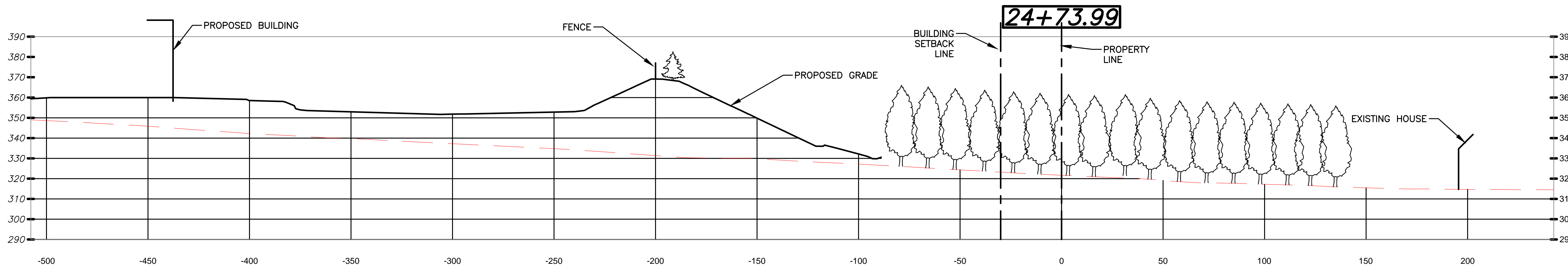
DATE: JANUARY 24, 2023

DEFINITE PLAN NO.:

3 of 4  
3



ALL RIGHTS RESERVED  
NO PART OF THIS DOCUMENT MAY BE REPRODUCED, STORED IN A RETRIEVAL SYSTEM, OR TRANSMITTED IN ANY FORM OR BY ANY MEANS, ELECTRONIC, MECHANICAL, OR OTHERWISE, WITHOUT THE PRIOR WRITTEN PERMISSION OF ENGINEERING DESIGN CONSULTANTS, INC. ANY VIOLATION OF THIS STATEMENT OF THE OWNER'S PERMISSIONS SHALL BE SUBJECT TO THE FULL ENFORCEMENT OF THE LAW AND SHALL BE SUBJECT TO THE FULL ENFORCEMENT OF THE LAW.



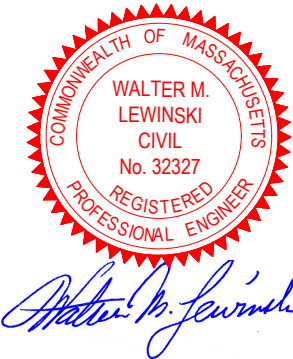
0 30 60 100  
SCALE: 1" = 30'

ENGINEERING DESIGN CONSULTANTS, INC. SHALL NOT BE RESPONSIBLE FOR CONSTRUCTION MEANS, METHODS, TECHNIQUES, OR PROCEDURES UTILIZED BY THE CONTRACTOR, NOR FOR THE SAFETY OF PUBLIC OR CONTRACTORS EMPLOYEES; OR FOR THE FAILURE OF THE CONTRACTOR TO CARRY OUT THE WORK IN ACCORDANCE WITH THE CONTRACT DOCUMENTS.

ENGINEERING DESIGN CONSULTANTS, INC.'S LIABILITY FOR THIS PLAN IS LIMITED TO THE EXTENT OF ITS FEE LESS THIRD PARTY COSTS.

DRAWN BY: WML  
CHECKED BY: PSB  
APPROVED BY: PSB

REVISIONS:  
0 1/24/23 ISSUED FOR DISCUSSION  
REV DATE DESCRIPTION



Engineering Design Consultants, Inc.  
32 Turnpike Road  
Southborough, Massachusetts  
ph: (508) 480-0225 fax: (800) 832-5781

PROJECT:

555 HOPPING BROOK ROAD  
HOLLISTON, MASSACHUSETTS  
(MIDDLESEX COUNTY)

TITLE:

SECTIONS  
555 HOPPING BROOK ROAD  
HOLLISTON, MASSACHUSETTS

OWNER/APPLICANT:

CRG INTEGRATED REAL ESTATE SOLUTIONS  
35 E. WACKER DRIVE  
CHICAGO, ILLINOIS 60601

FILE NO: 3780 ABUTTER CROSS SECTIONS

DATE: JANUARY 24, 2023

DEFINITE PLAN NO.:

4 of 4  
4